

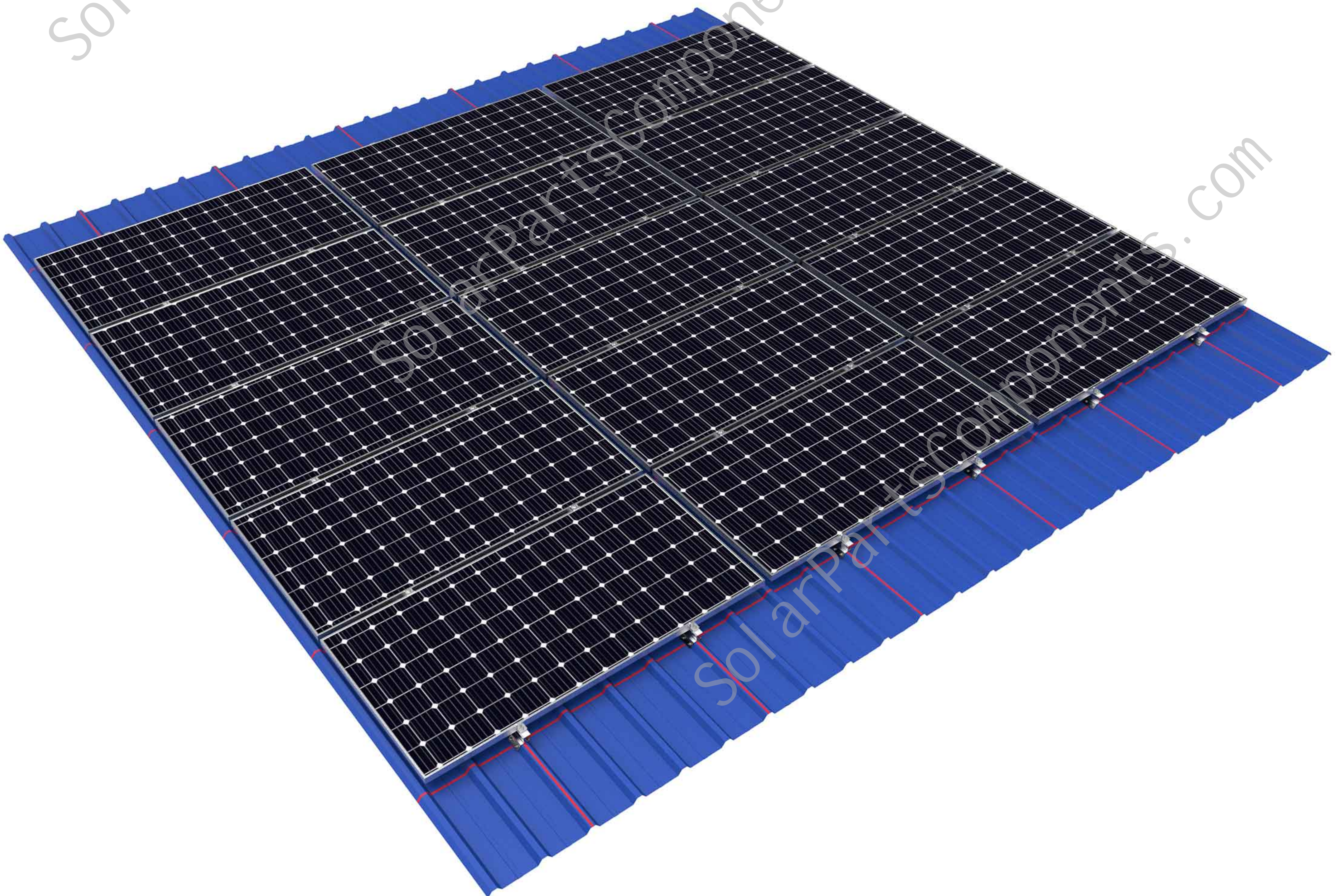


ROOF SOLUTION

Solar Metal Roof Clamp

Installation Steps

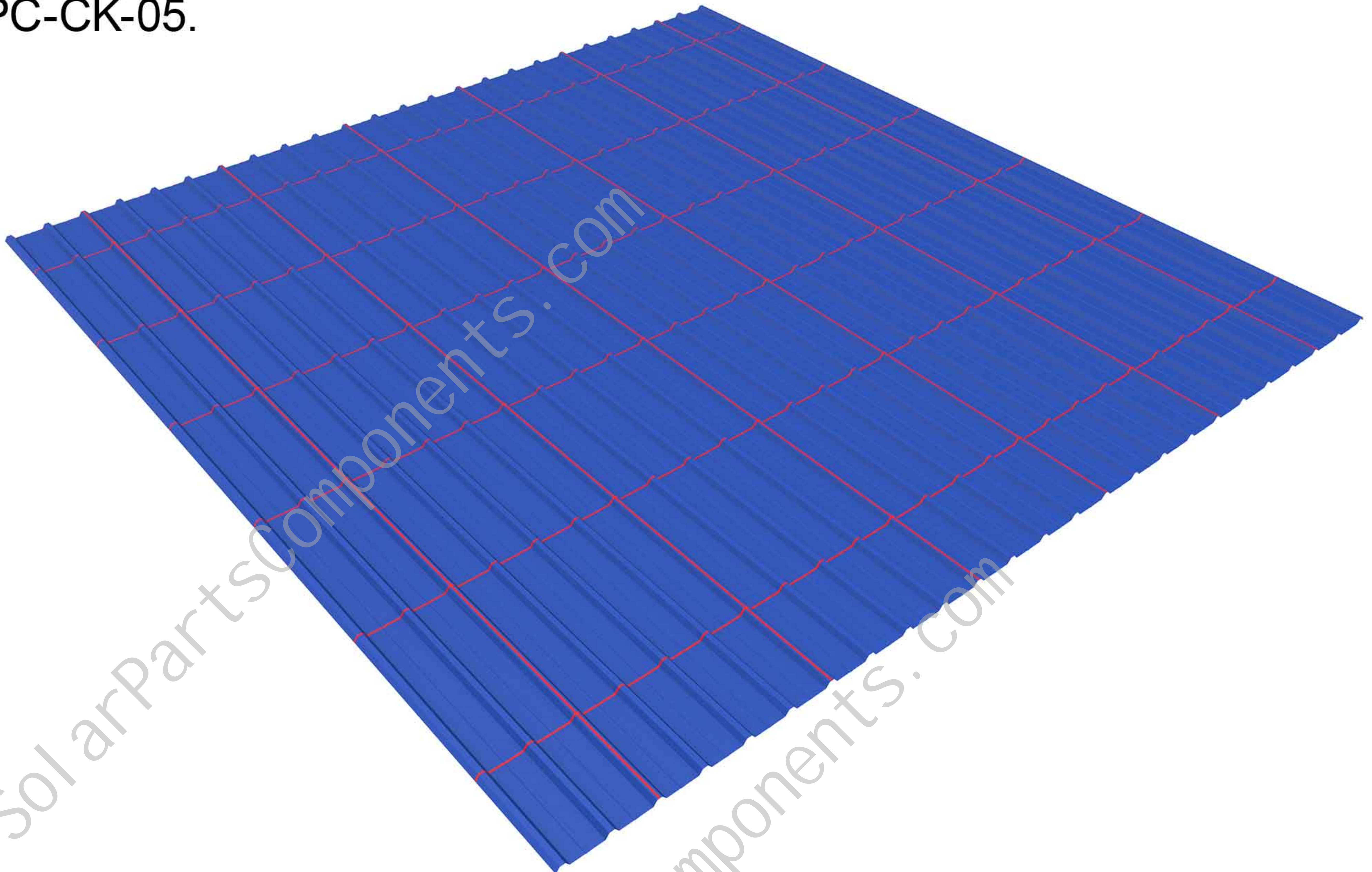
SPC-RF-CK05-HR



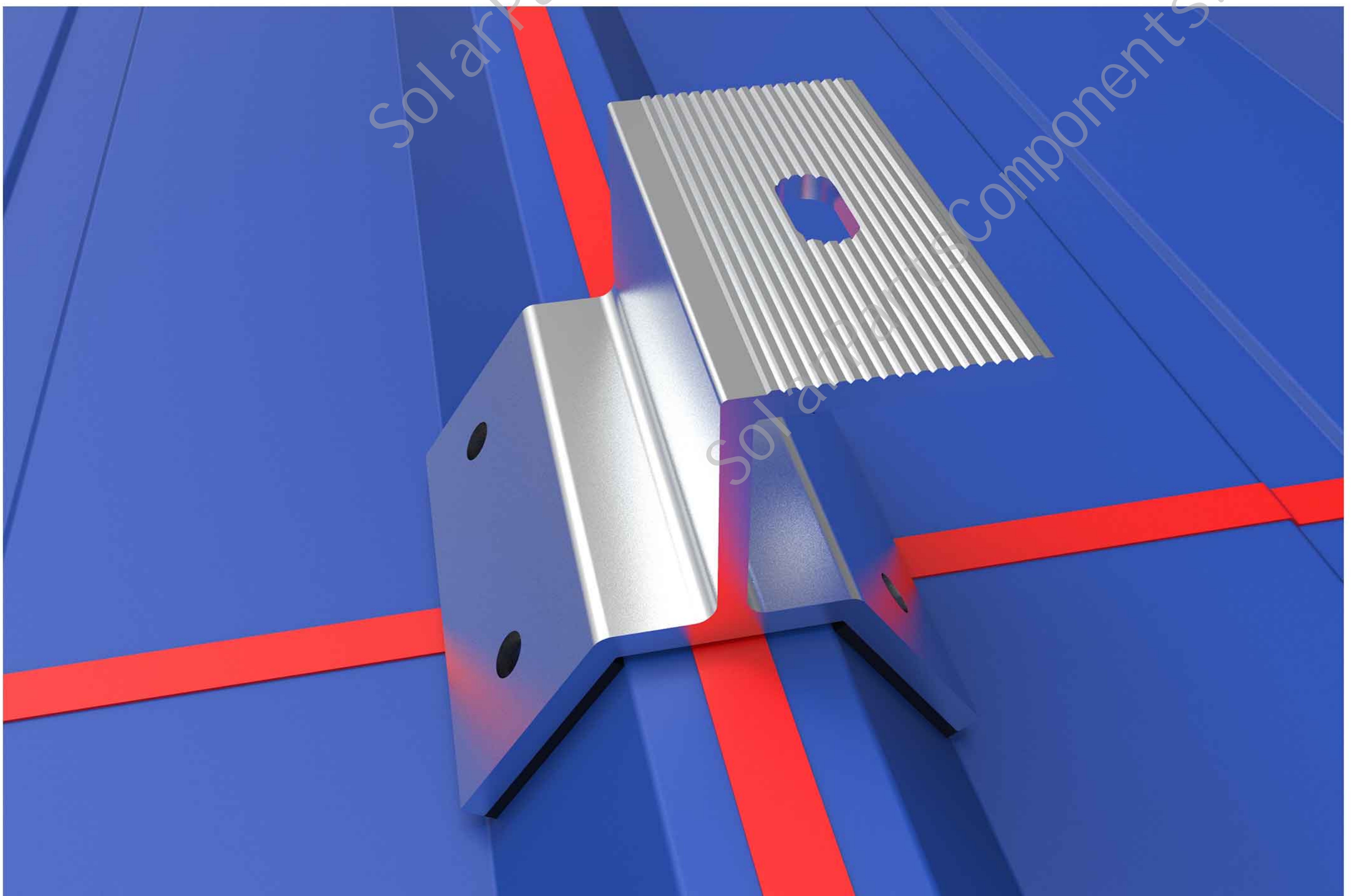
The metal roof clamp SPC-CK-05 is made of aluminum alloy, and the surface is anodized, which is not easy to corrode and is light in weight. The overall mounting components are few, and the installation is simple and convenient. The Small Components are pre-assembled in the factory, which saves assembly time and labor costs on site. Before installing the system, please read the following installation instructions carefully.

Solar Metal Roof Clamp SPC-CK-05 Installation Steps

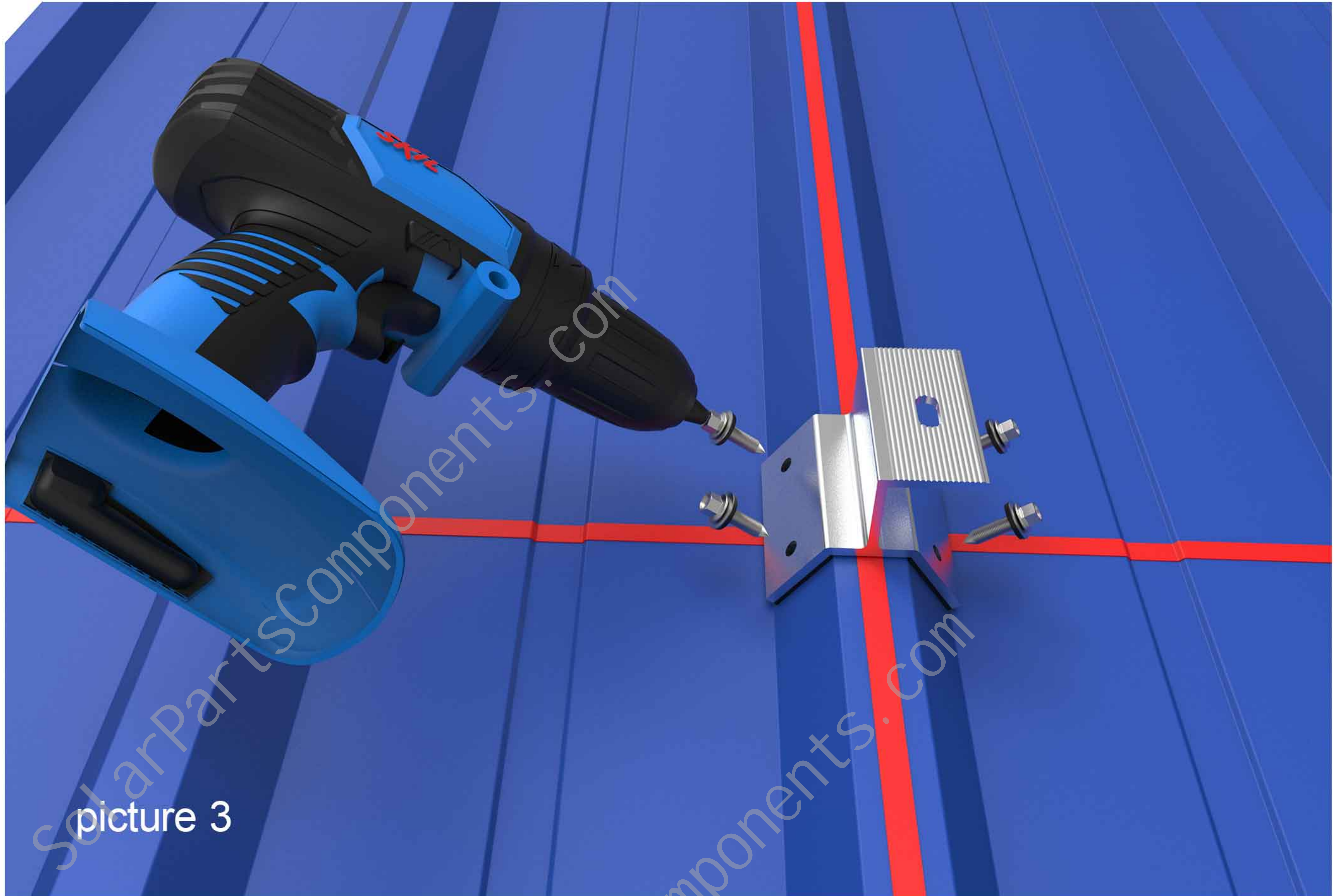
Step one, clean the tin roof, and according to the site construction drawings, draw a line at the installation position of the tin roof clamp SPC-CK-05.



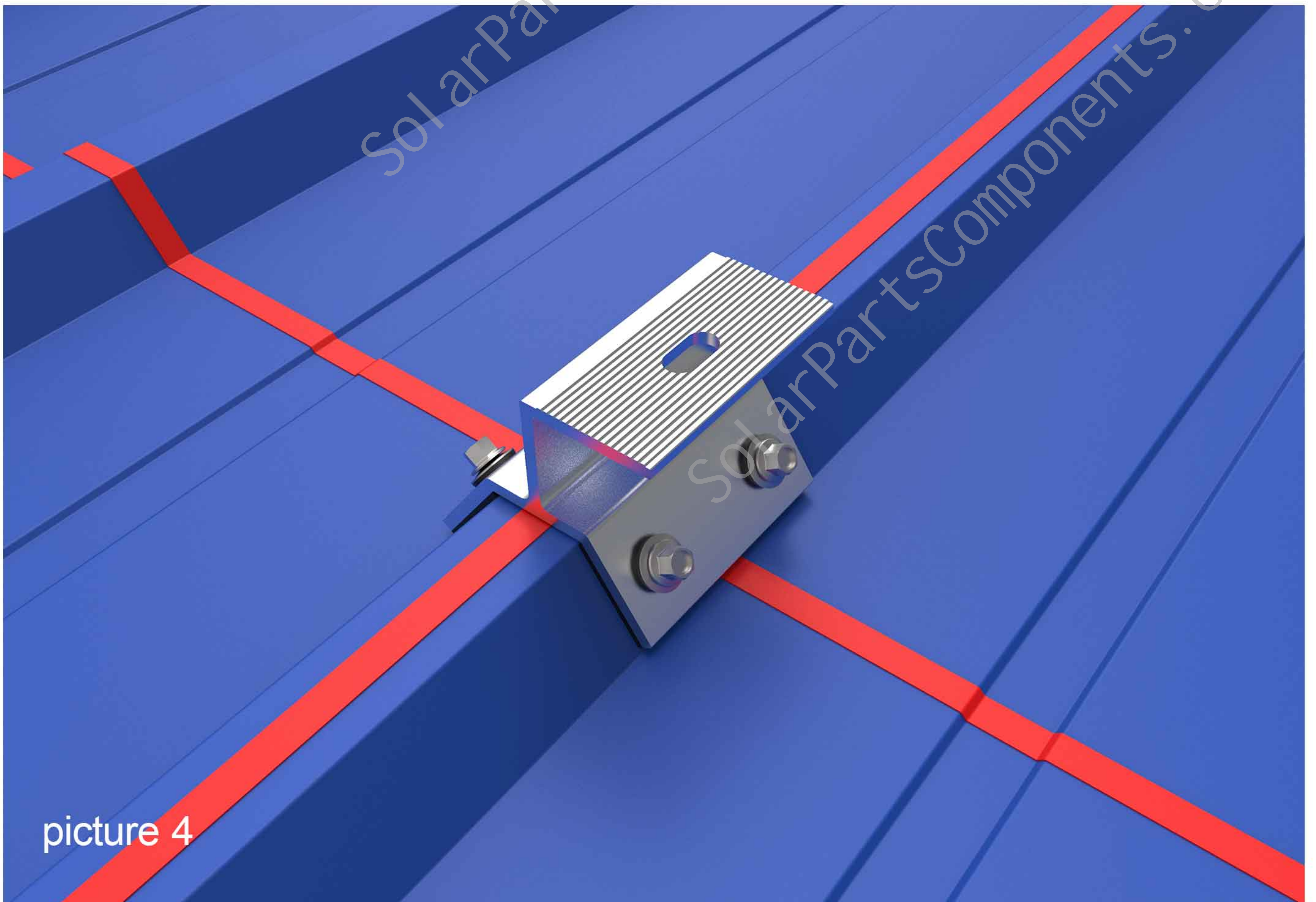
Step two, put the trapezoidal clamp SPC-CK-05 on the installation position of the tin roof, the rubber washer is attached to the side of the tin roof wave crest.



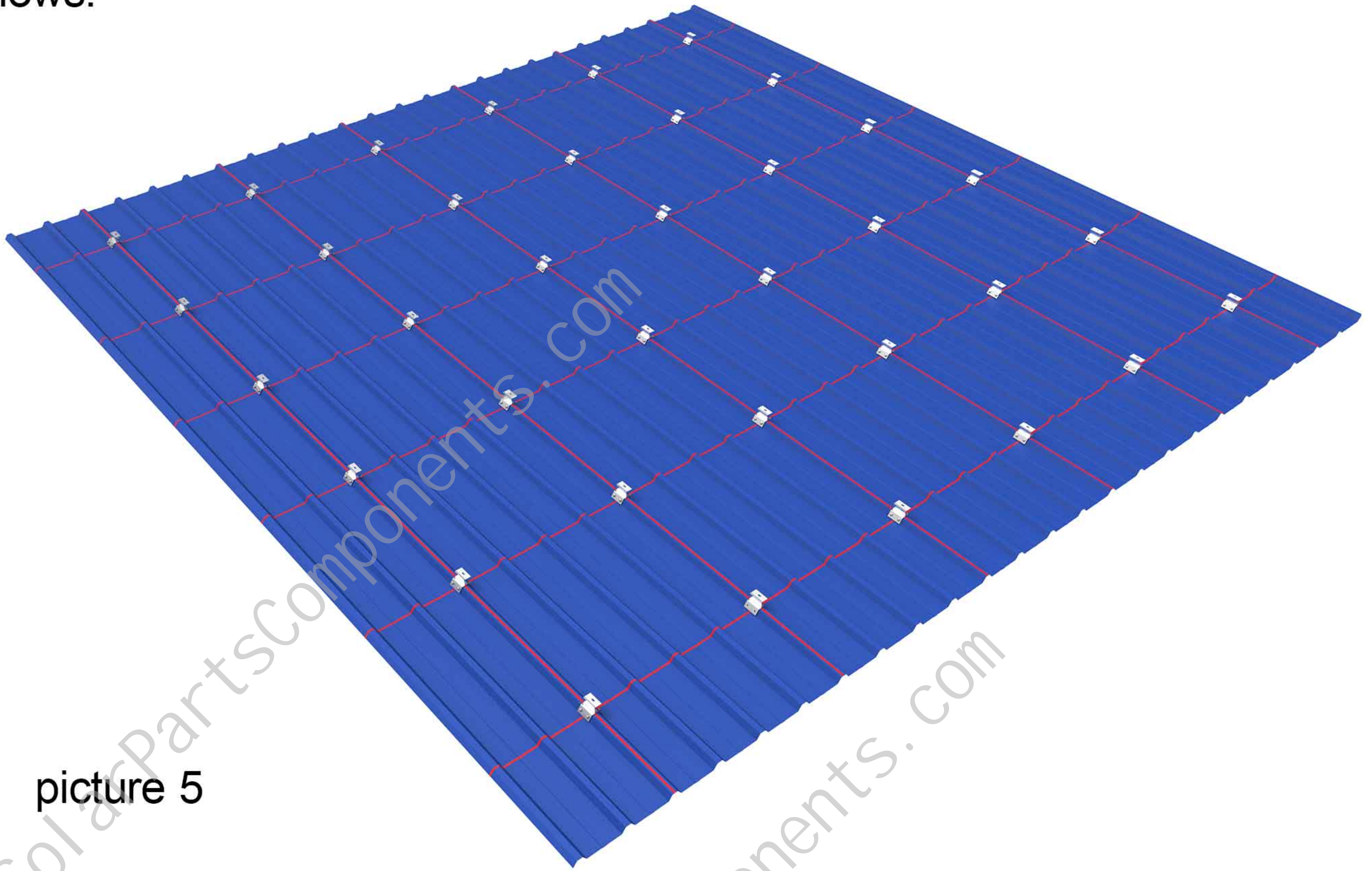
Step three, And fix the trapezoidal clamp with four self-tapping screw (ST6.3 * 25), as picture 3 shows.



After installation ,as picture 4 shows.

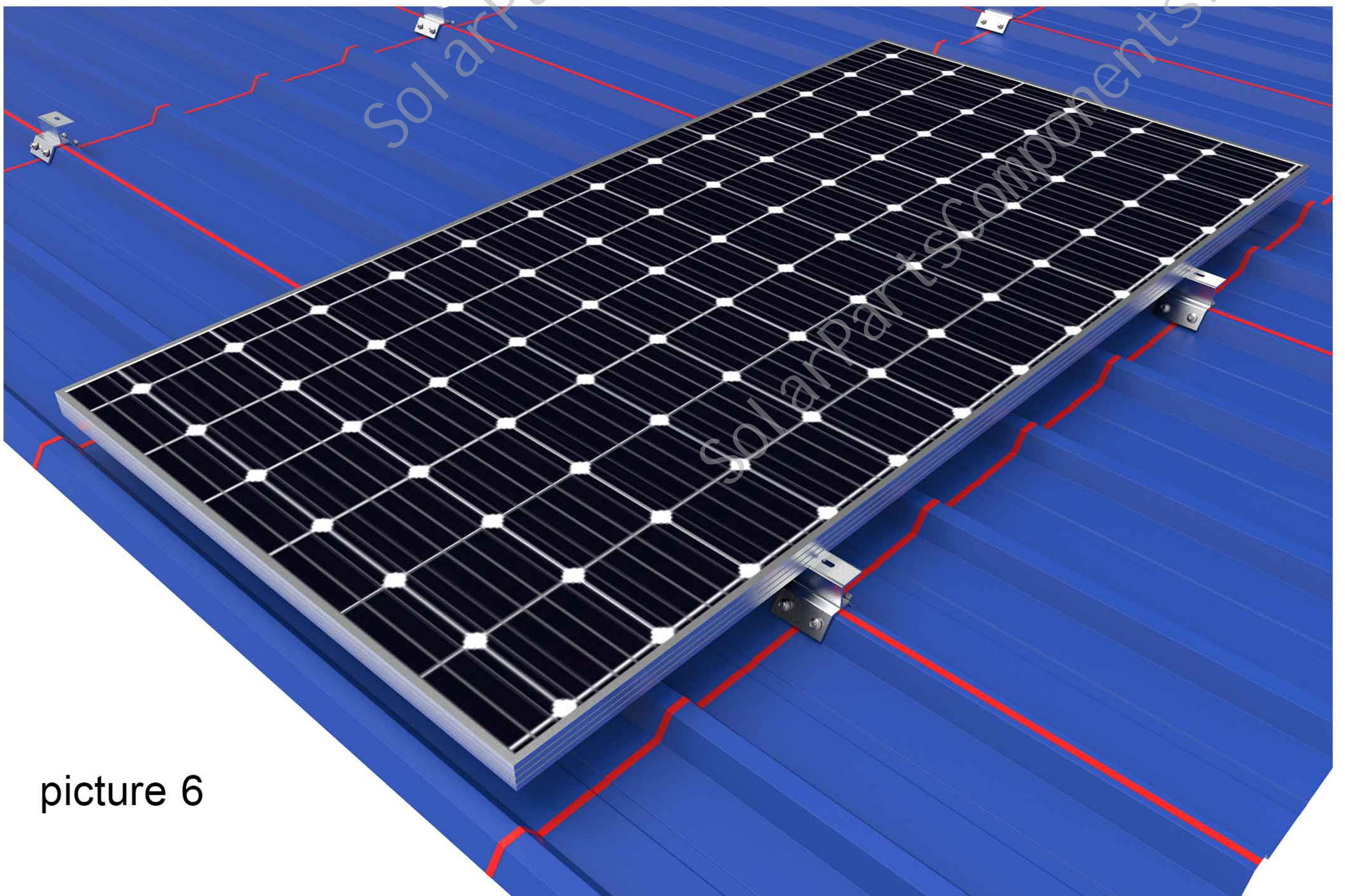


According to step 2, fix all the remaining trapezoidal clamps SPC-CK-05 on the tin roof according to the drawings. After installation, as picture 5 shows.



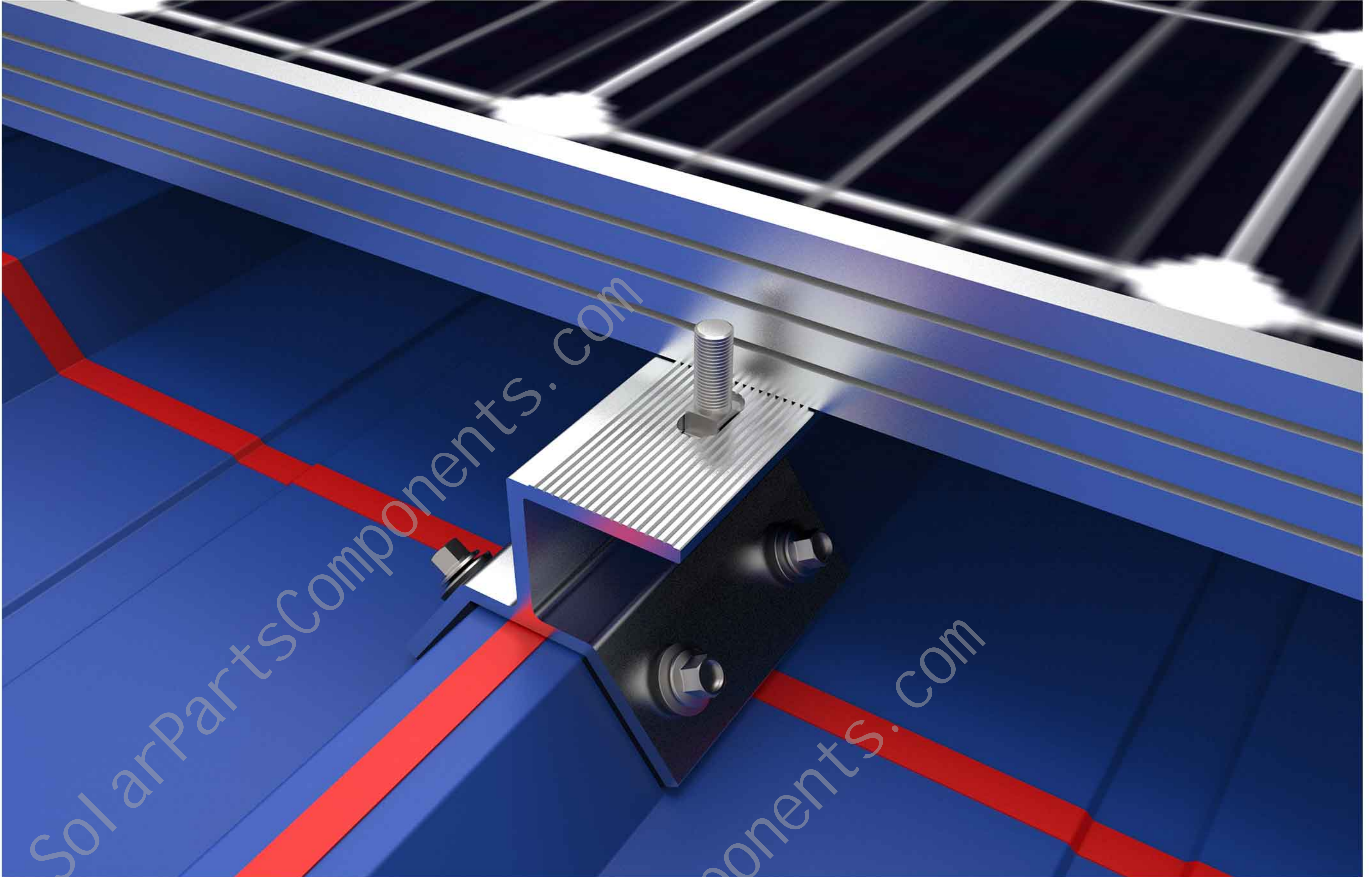
picture 5

Step four, put the solar panel horizontally on the four SPC-CK-05 trapezoidal clamps, and the mounting holes on the clamps need to be exposed. Hold the solar panel by hand when installing to prevent the panel from sliding down. As picture 6 shows.

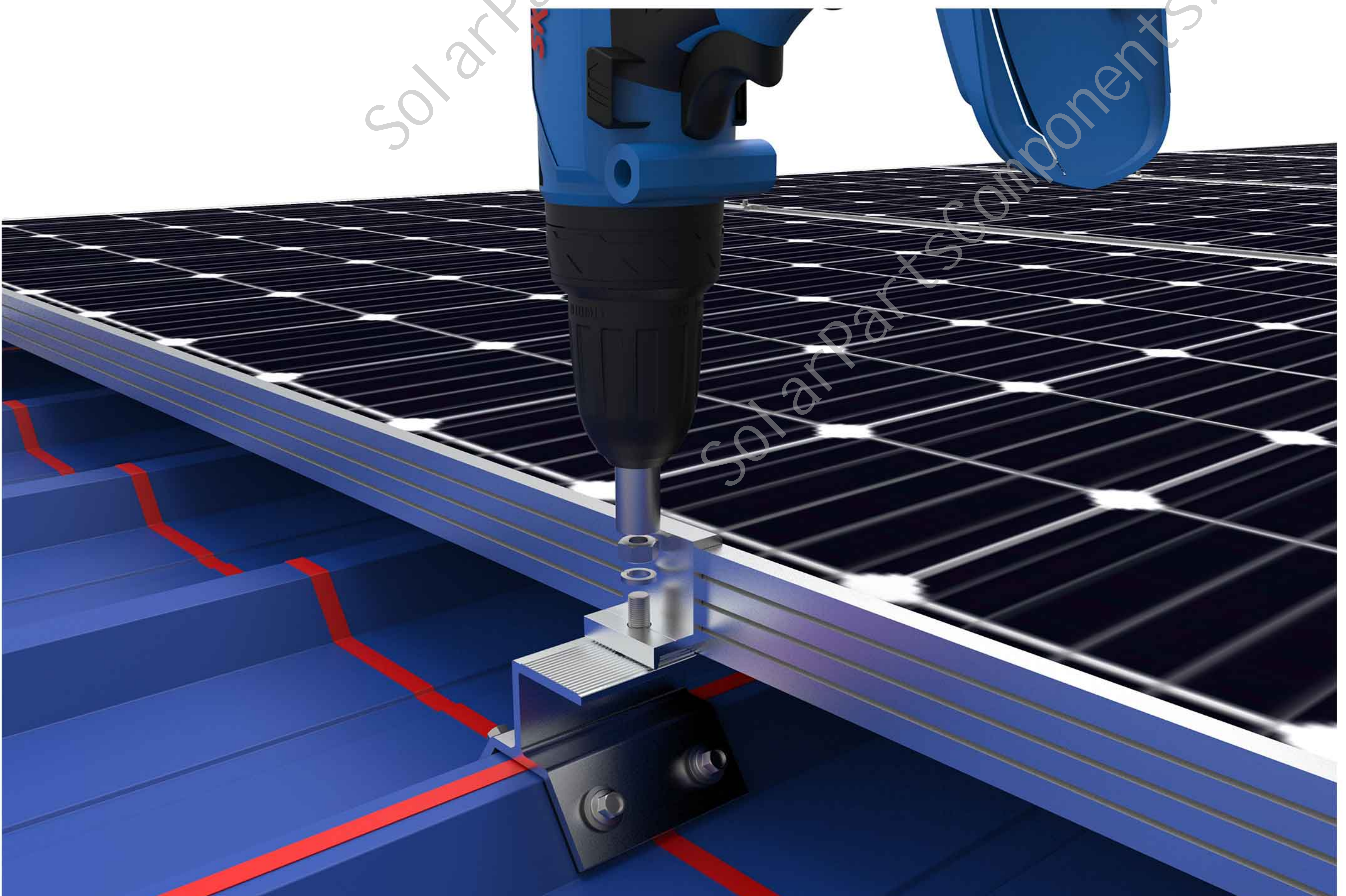


picture 6

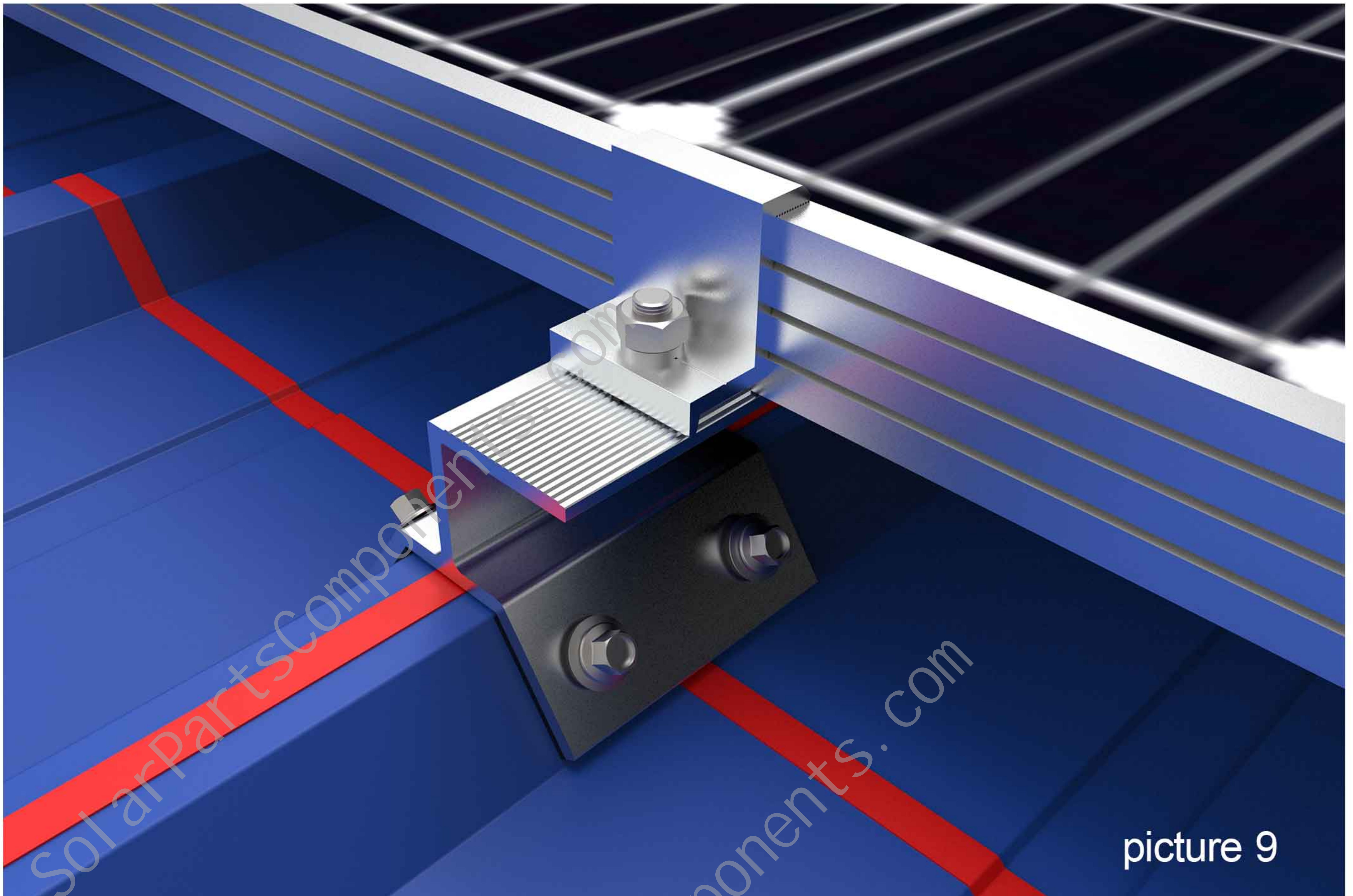
Step five, remove the Carriage bolt on the end clamp. pass under the SPC-CK-05 trapezoidal clamp mounting hole to expose the threaded part.



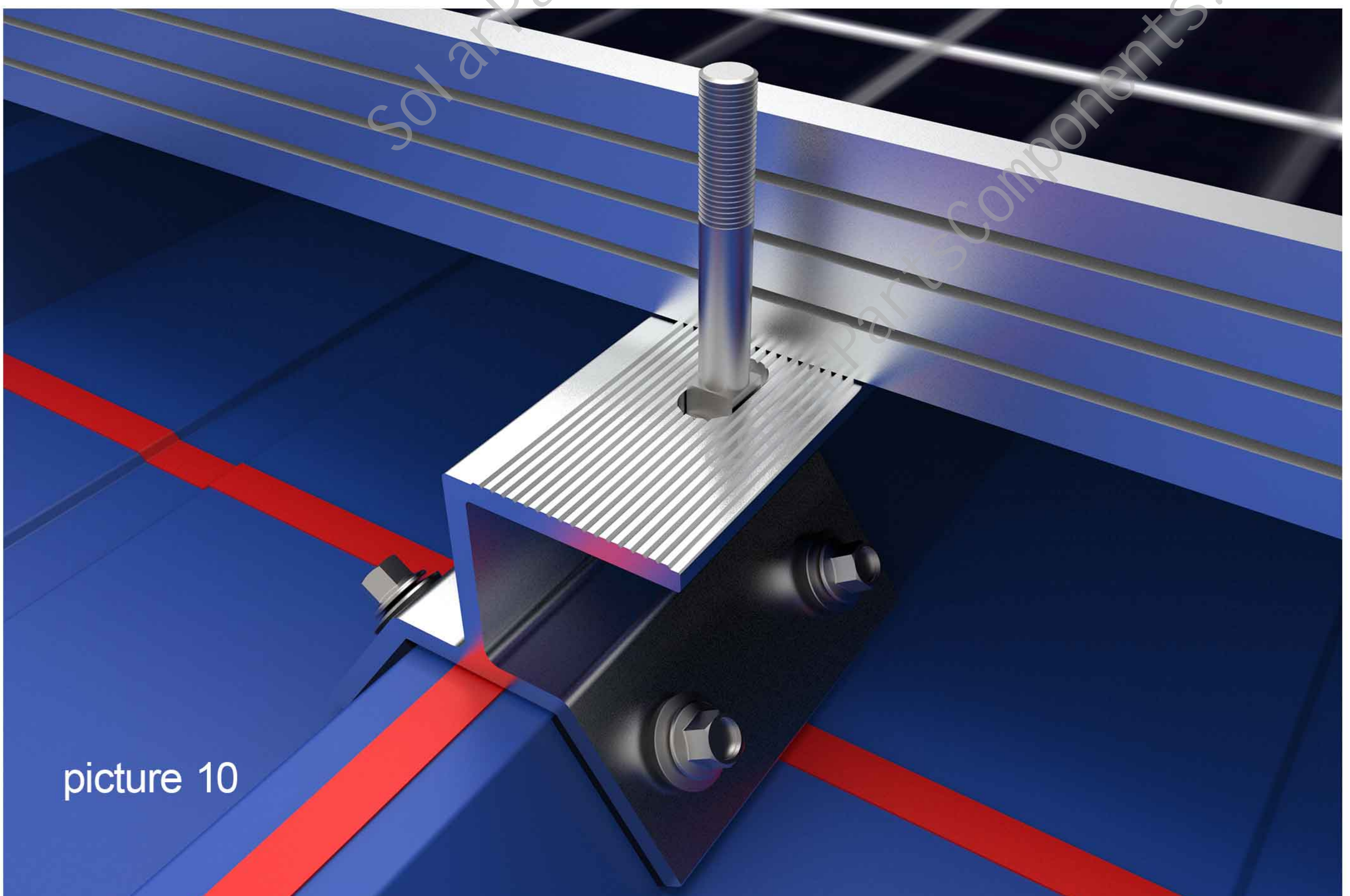
Step six, pass the end clamp, M8 spring washer, and nut through the exposed bolts in turn, and then use a sleeve to lock the nut on the end clamp.



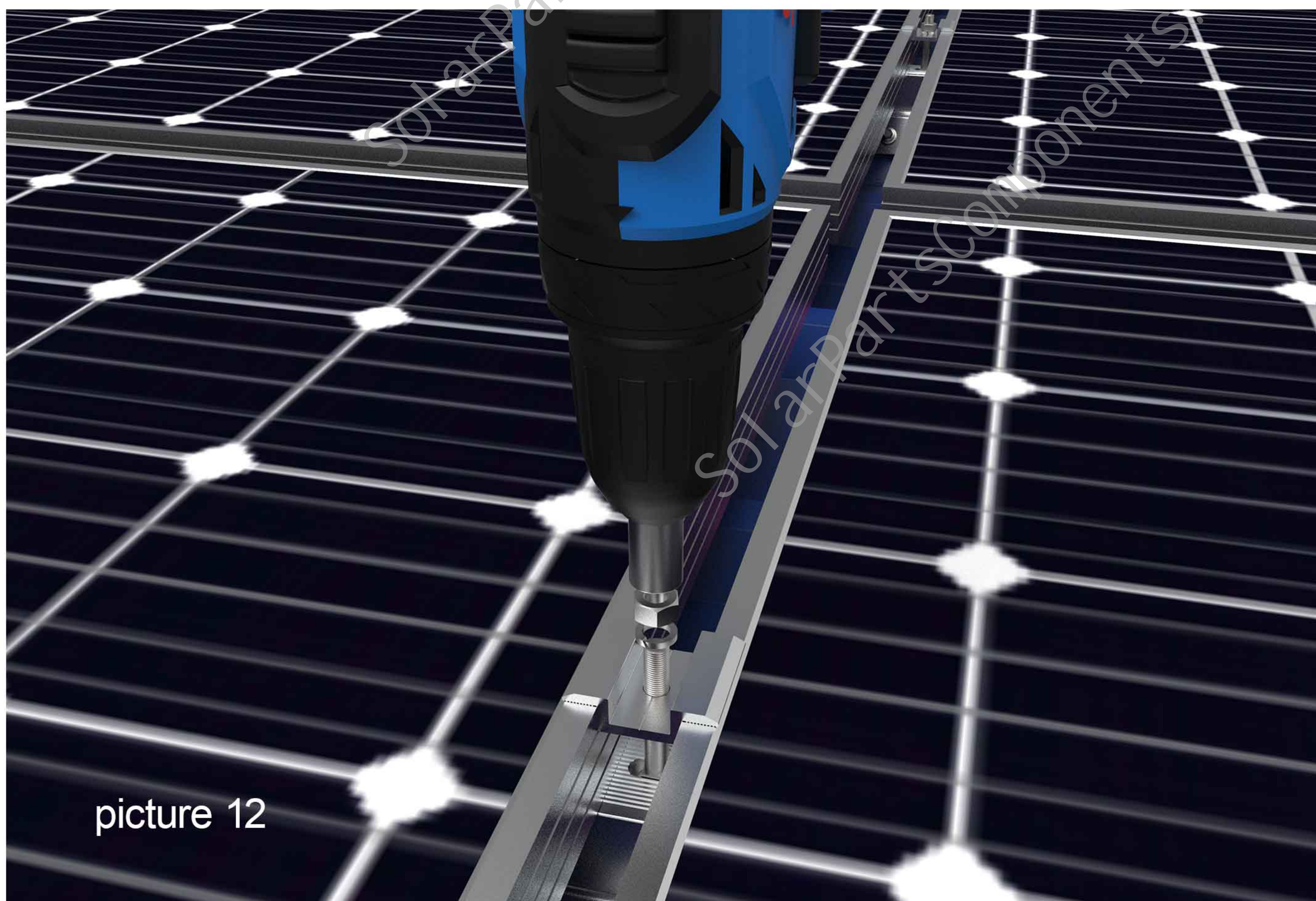
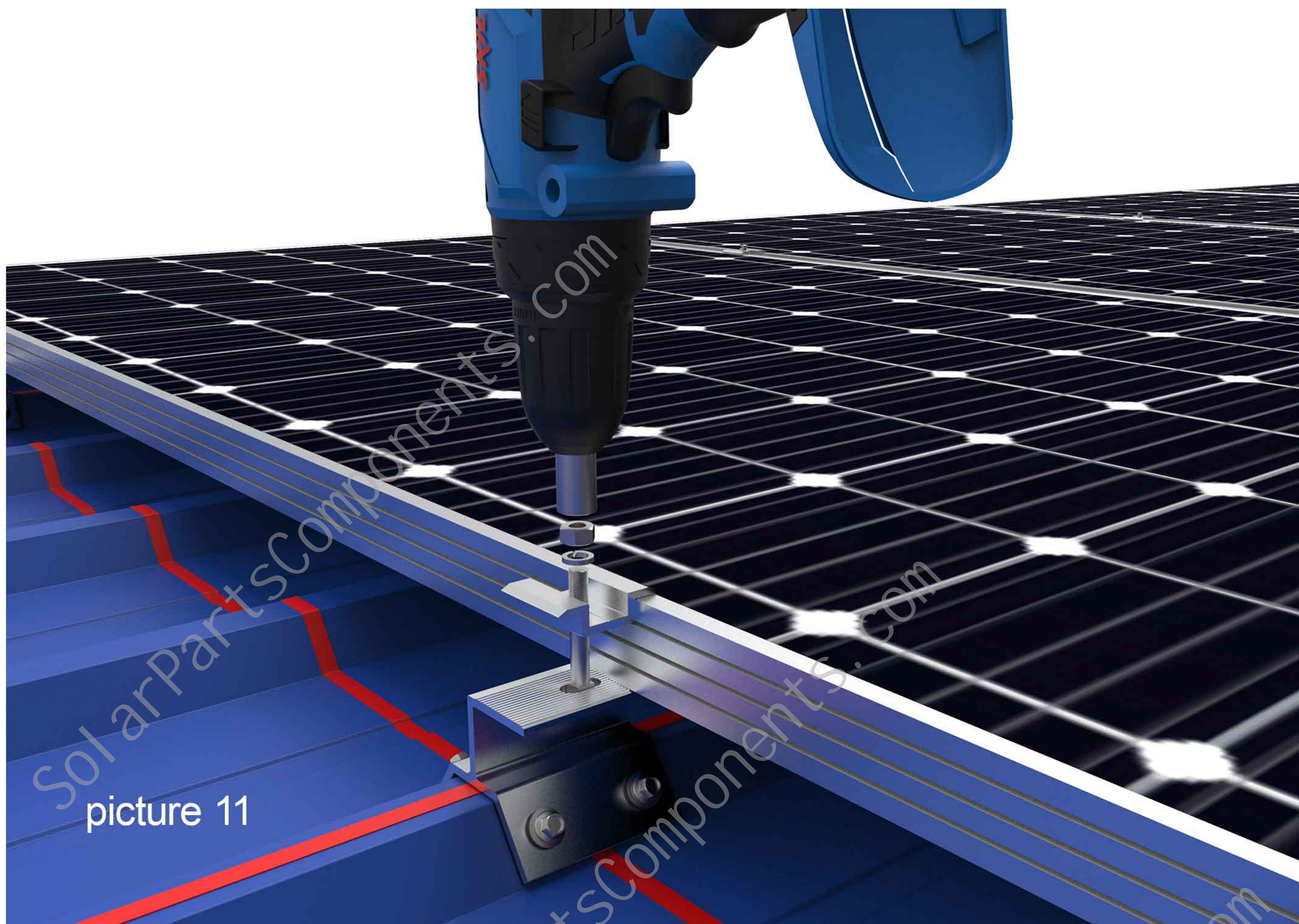
After installation ,as picture 9 shows.



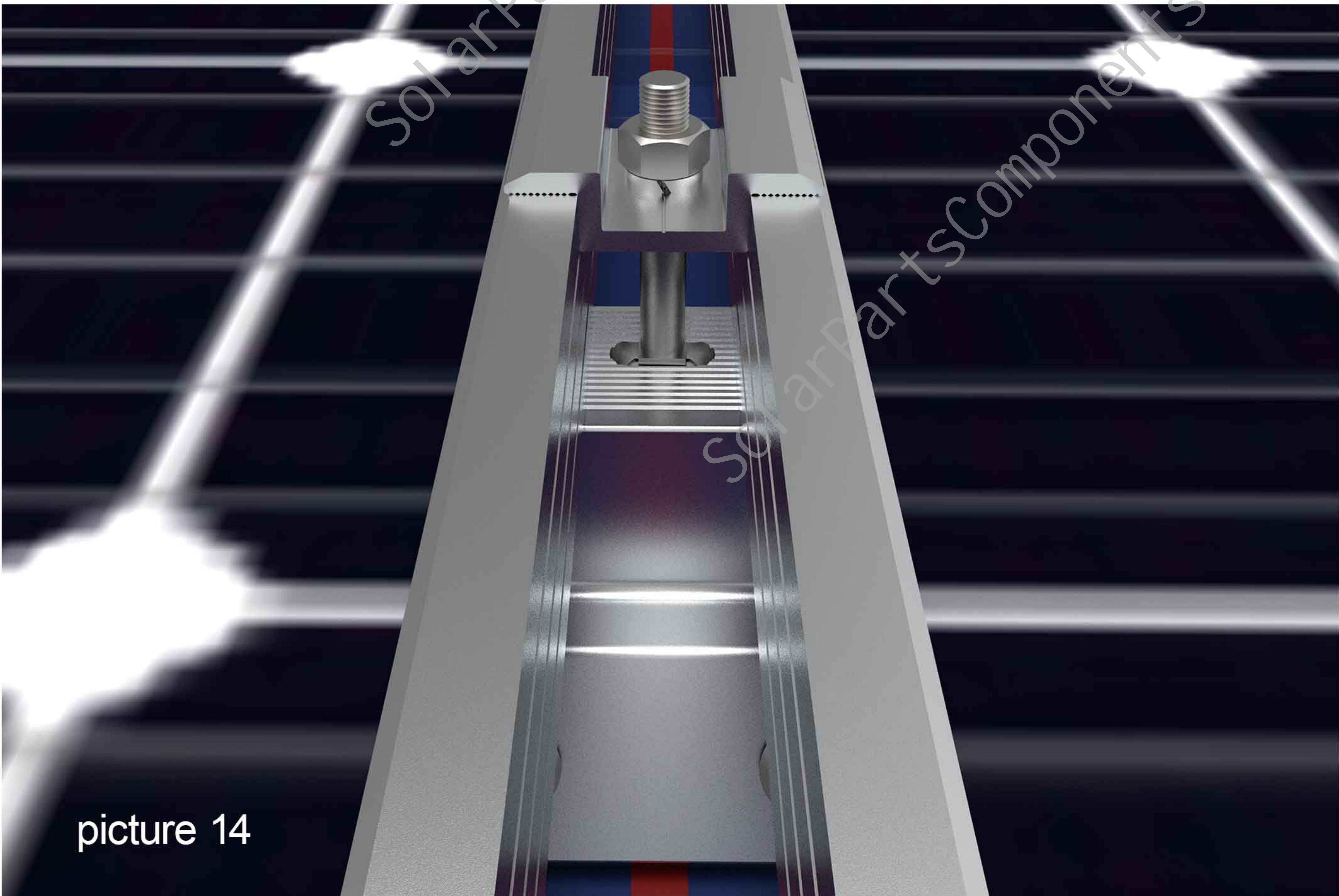
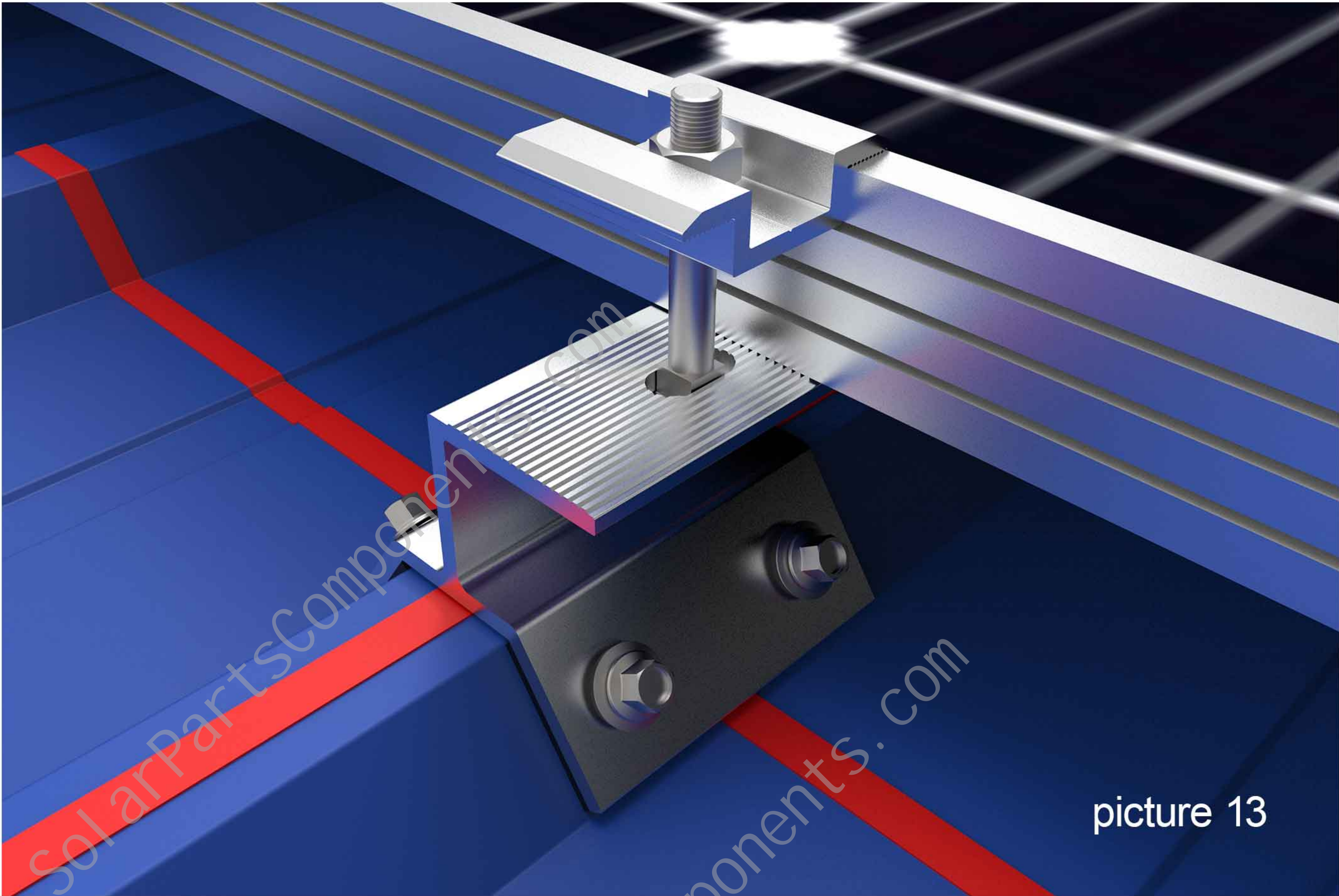
Step seven, remove the longer carriage bolts from the mid clamp components. Pass under the SPC-CK-05 trapezoidal clamp mounting hole to expose the threaded part, as picture 10 shows.



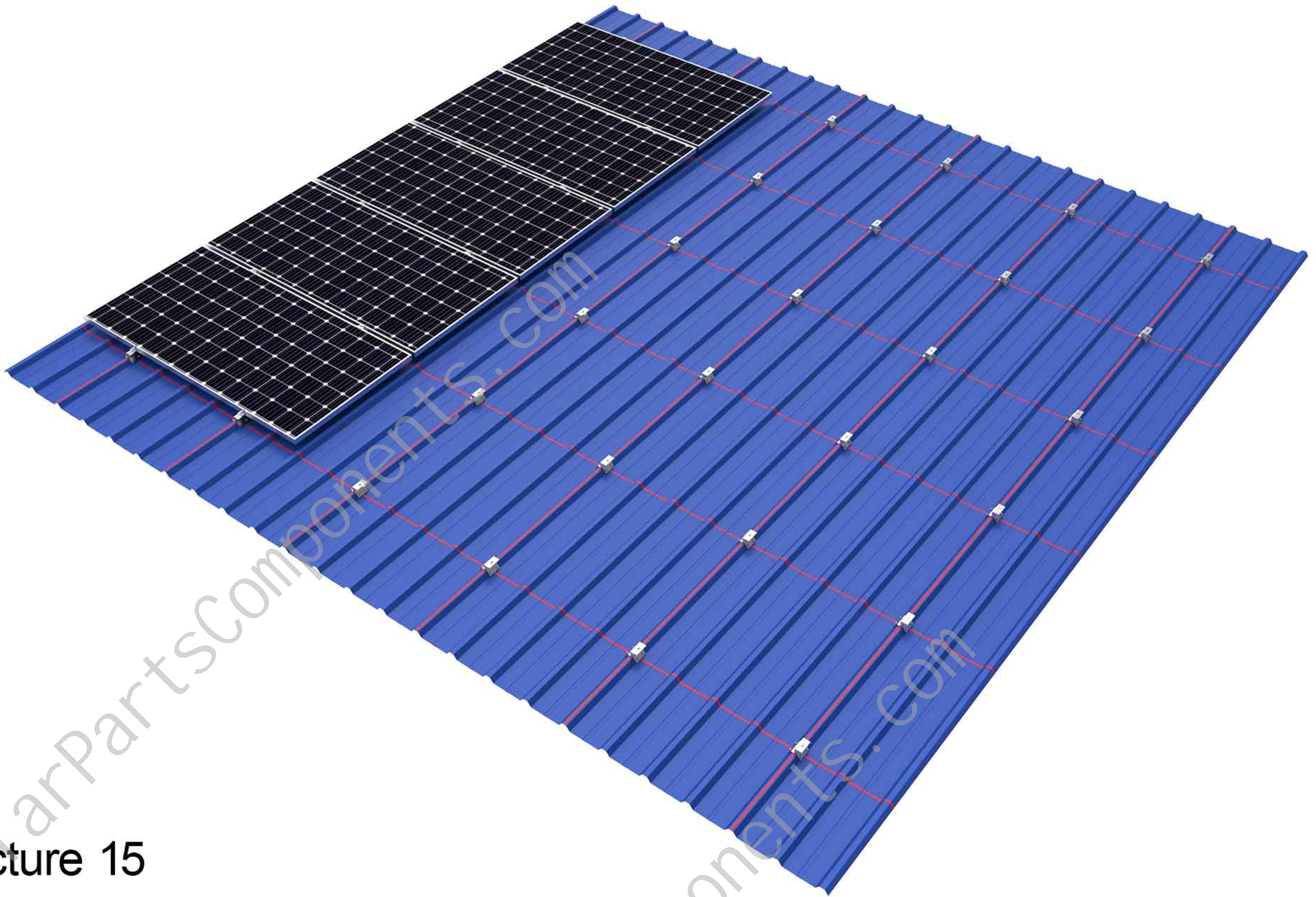
Step eight, pass the mid clamp, M8 spring washer, and nut through the exposed bolts in turn, and then use the sleeve to lock the nut on the mid clamp, as picture 11-12 shows.



After the installation is complete, as picture 13-14 shows.

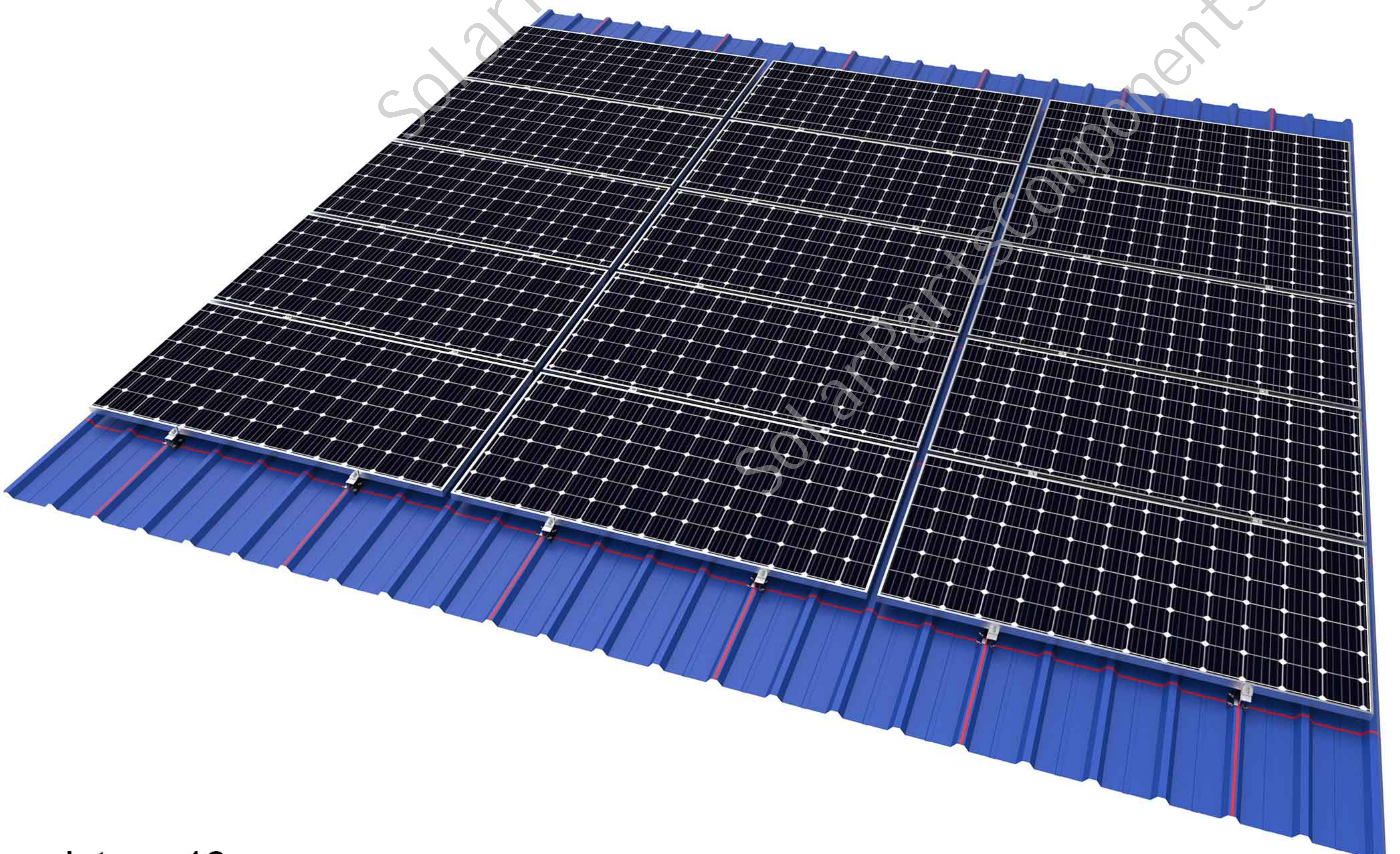


According to the above steps, install the panels in sequence with the mid clamp, as picture 15 shows.

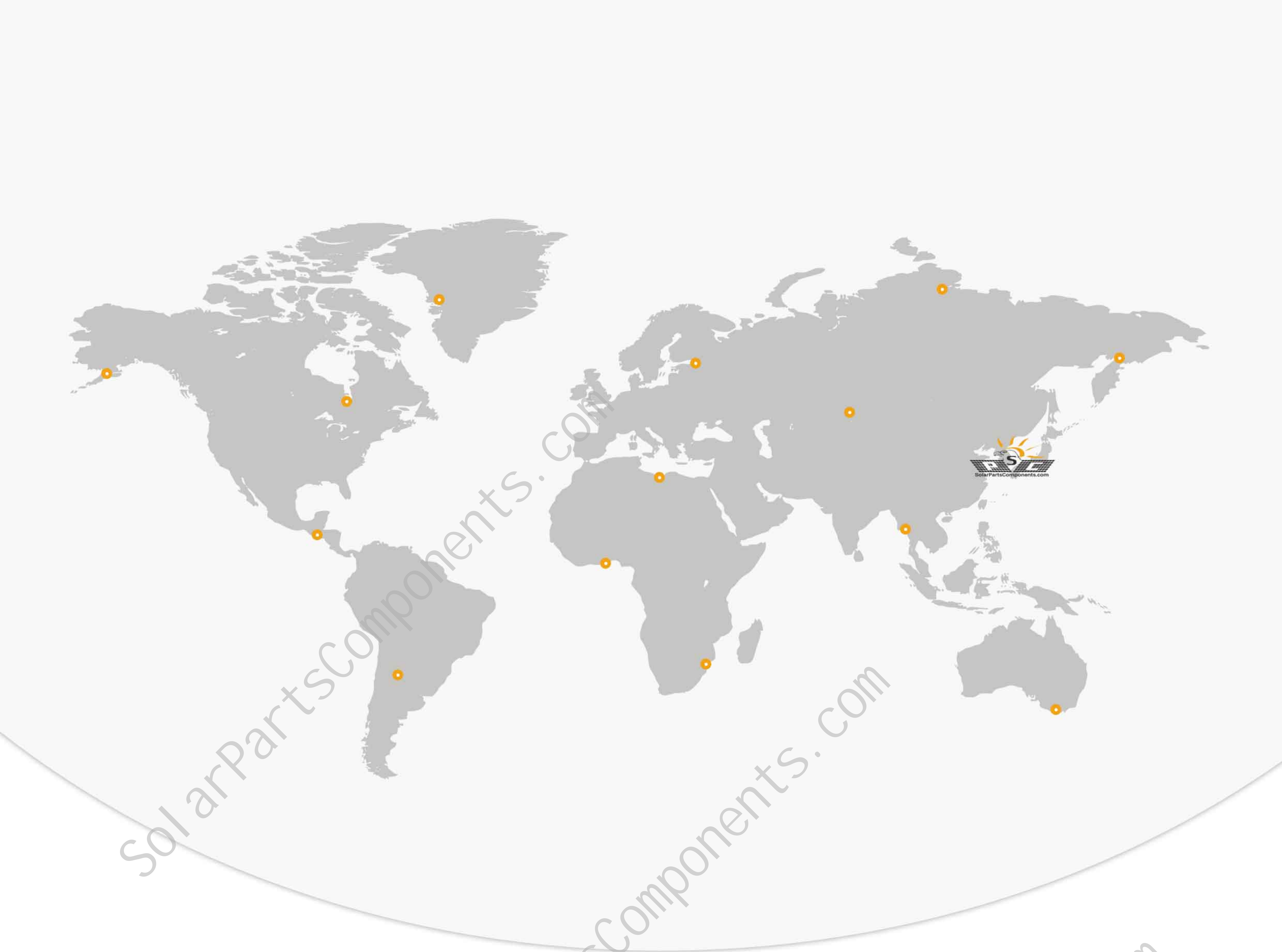


picture 15

After the overall installation is complete as picture 16 shows.



picture 16



Solar Mounting Parts & Components Factory



SolarPartsComponents.com
XIAMEN TOP BEST TECH CO.,LTD
Info@SolarPartsComponents.com

