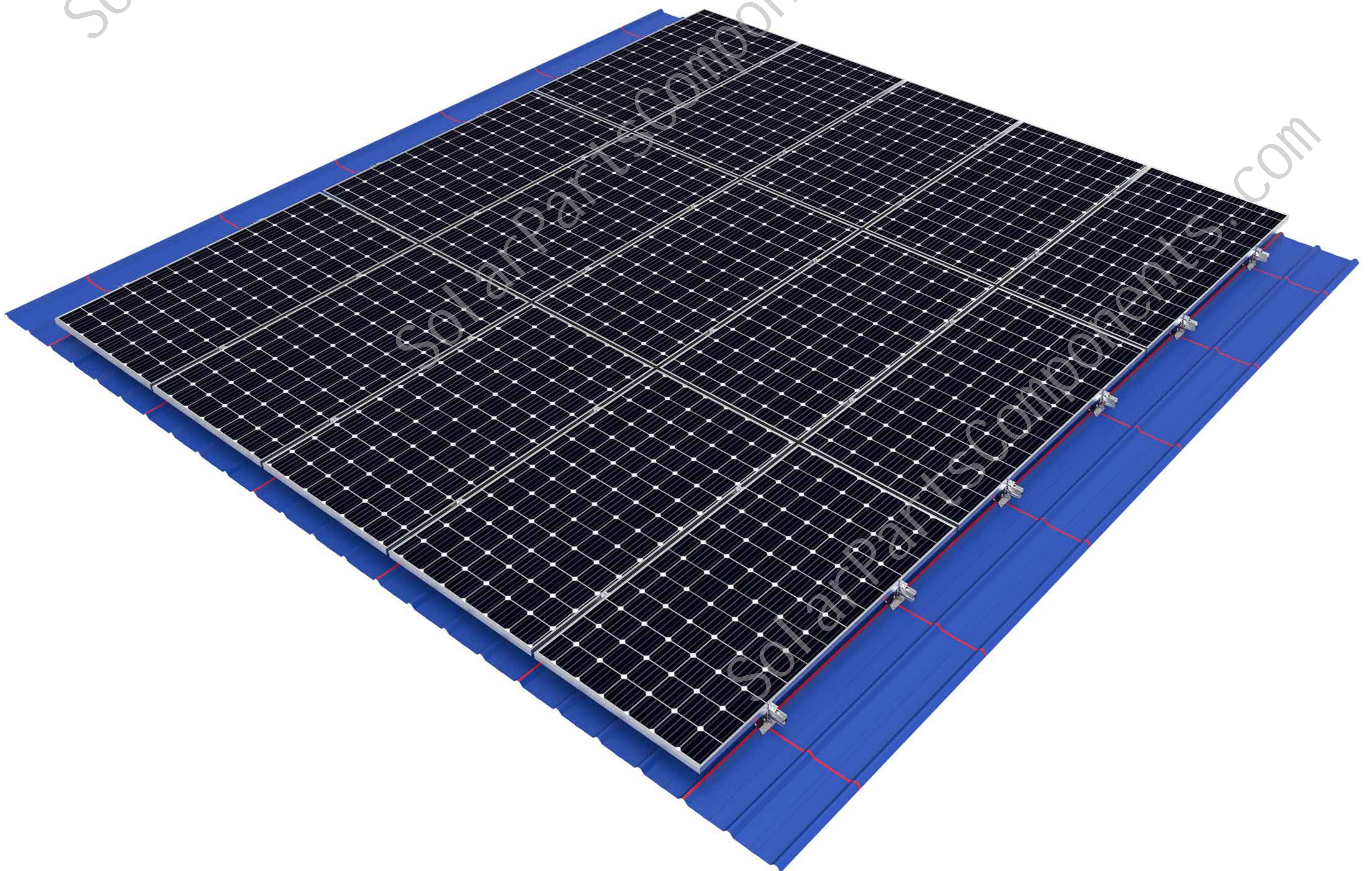




ROOF SOLUTION

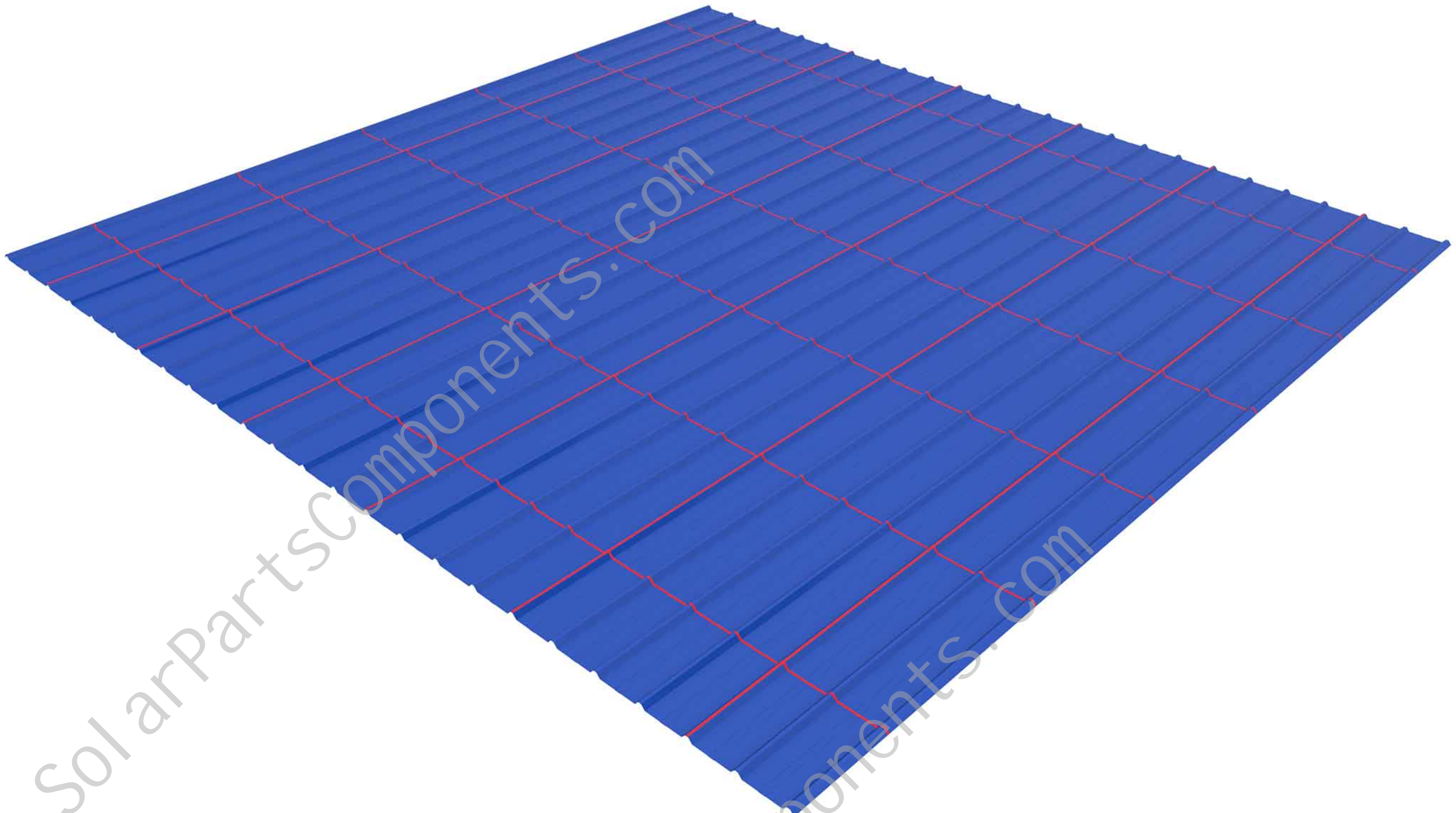
Solar Multifunctional Roof Clamp Side Mounting System SPC-RF-CK02A-DR



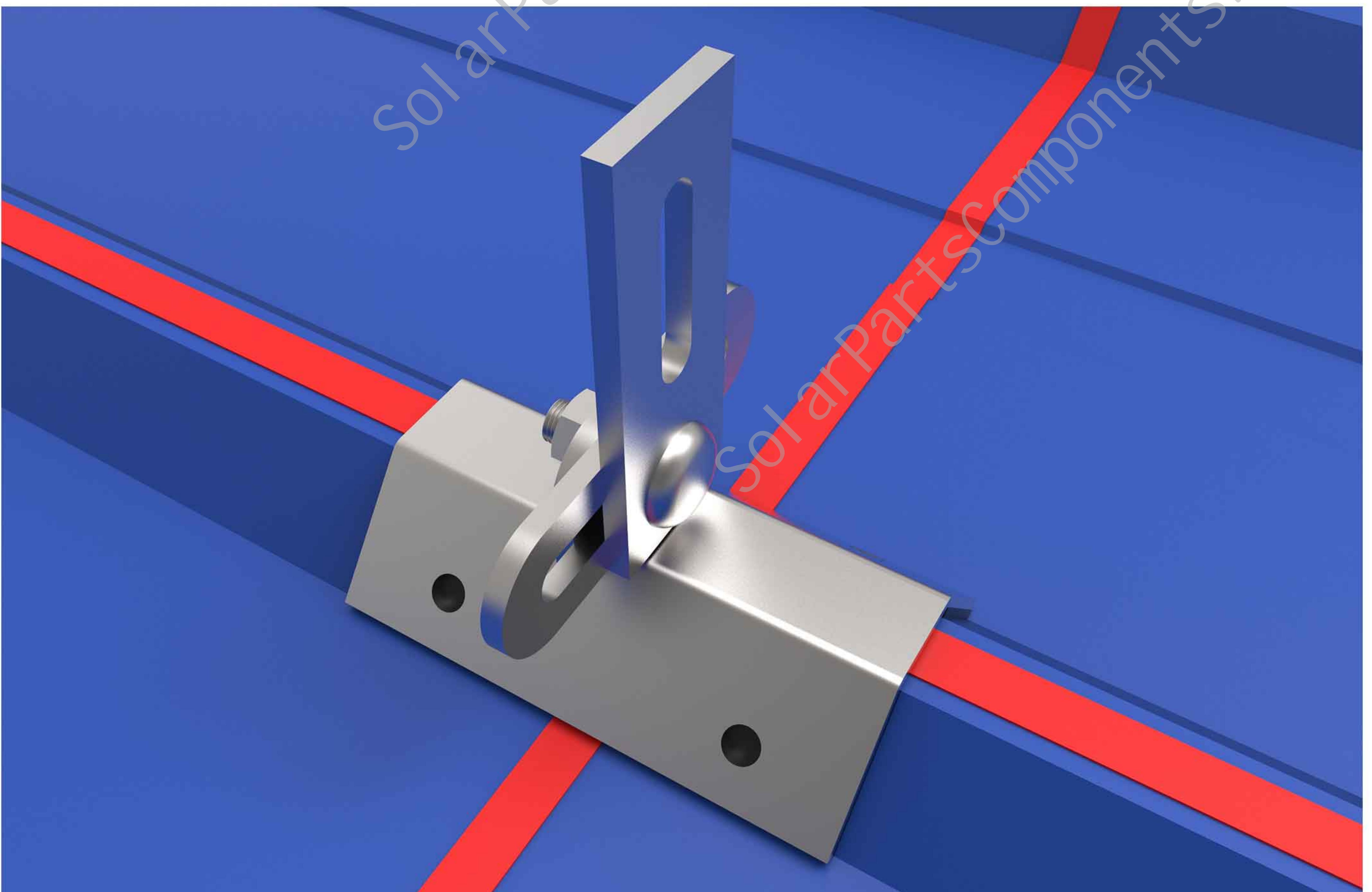
The multifunctional roof clamp is made of stainless steel, corrosion-resistant and beautiful in appearance. The H-shape rail is made of aluminum alloy, and the surface is anodized, which is not easy to corrode and is light in weight. The overall mounting components are few, and the installation is simple and convenient. The Small Components are pre-assembled in the factory, which saves assembly time and labor costs on site. Before installing the system, please read the following installation instructions carefully.

Stainless steel multifunctional roof clamp installation steps

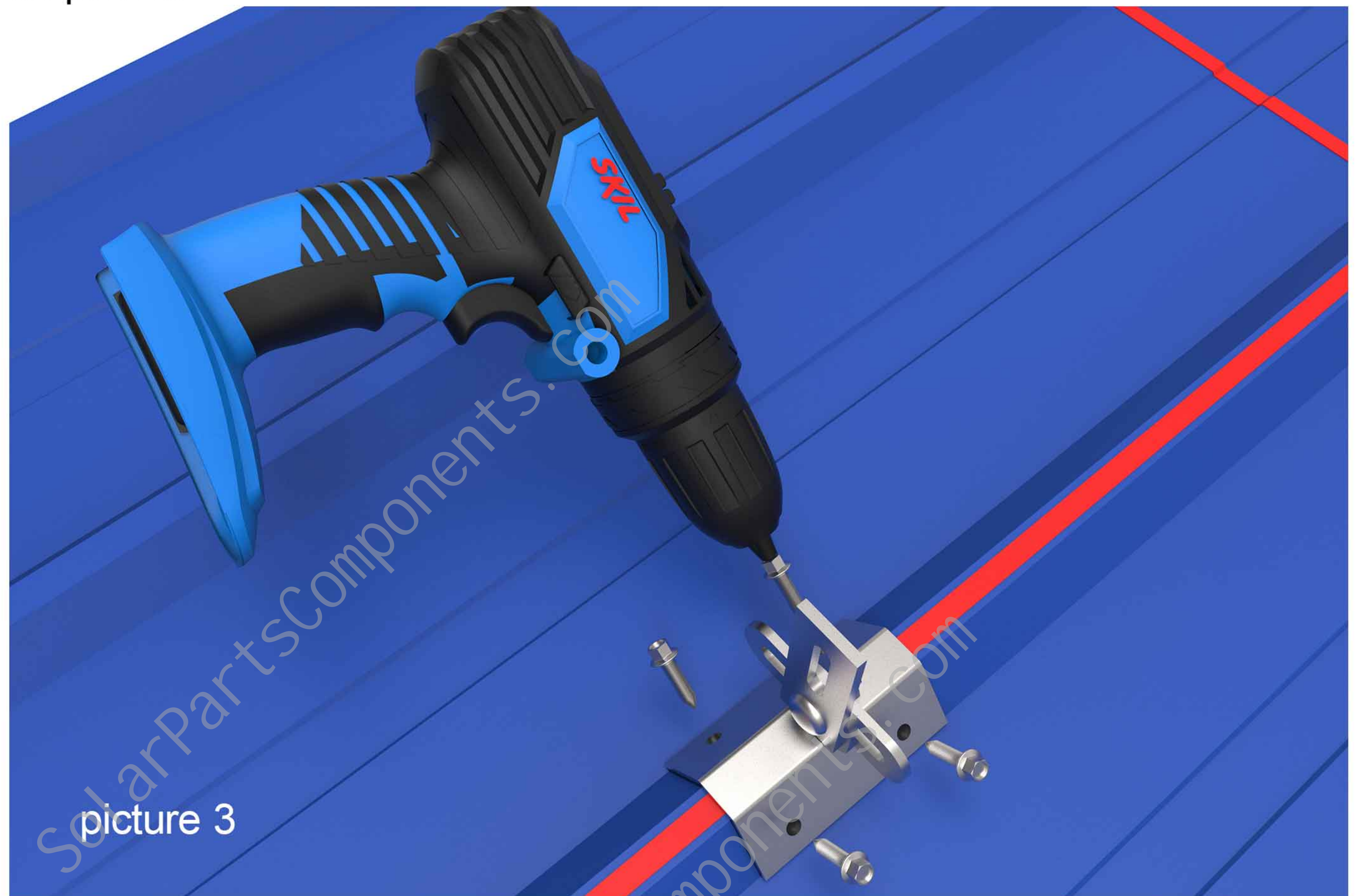
Step one, Clean the tin roof, and according to the site construction drawings, Draw a line at the installation position of the tin roof multifunctional clamp.



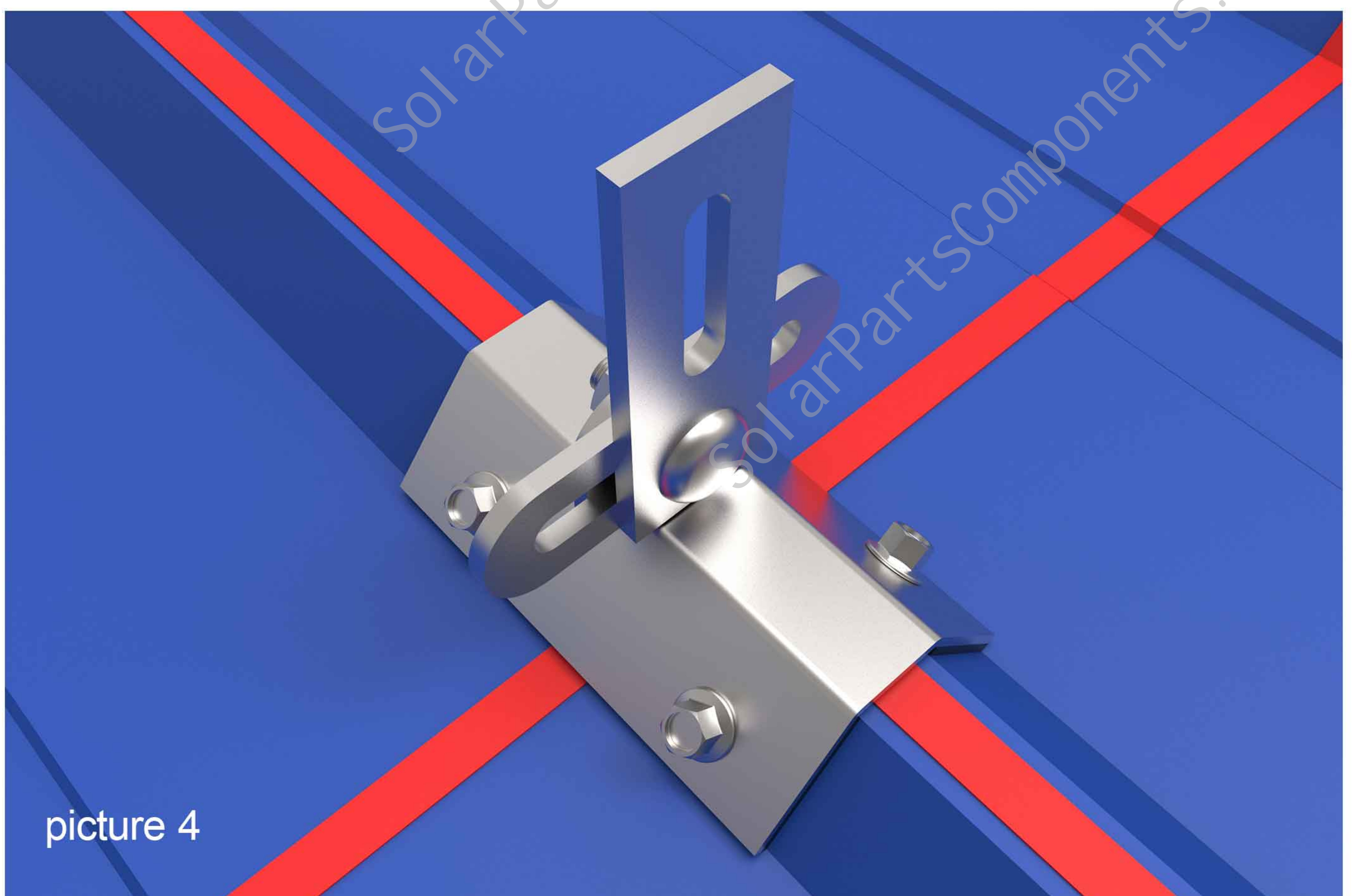
Step two, Put the multifunctional clamp on the installation position of the tin roof, the rubber washer is attached to the side of the tin roof wave crest.



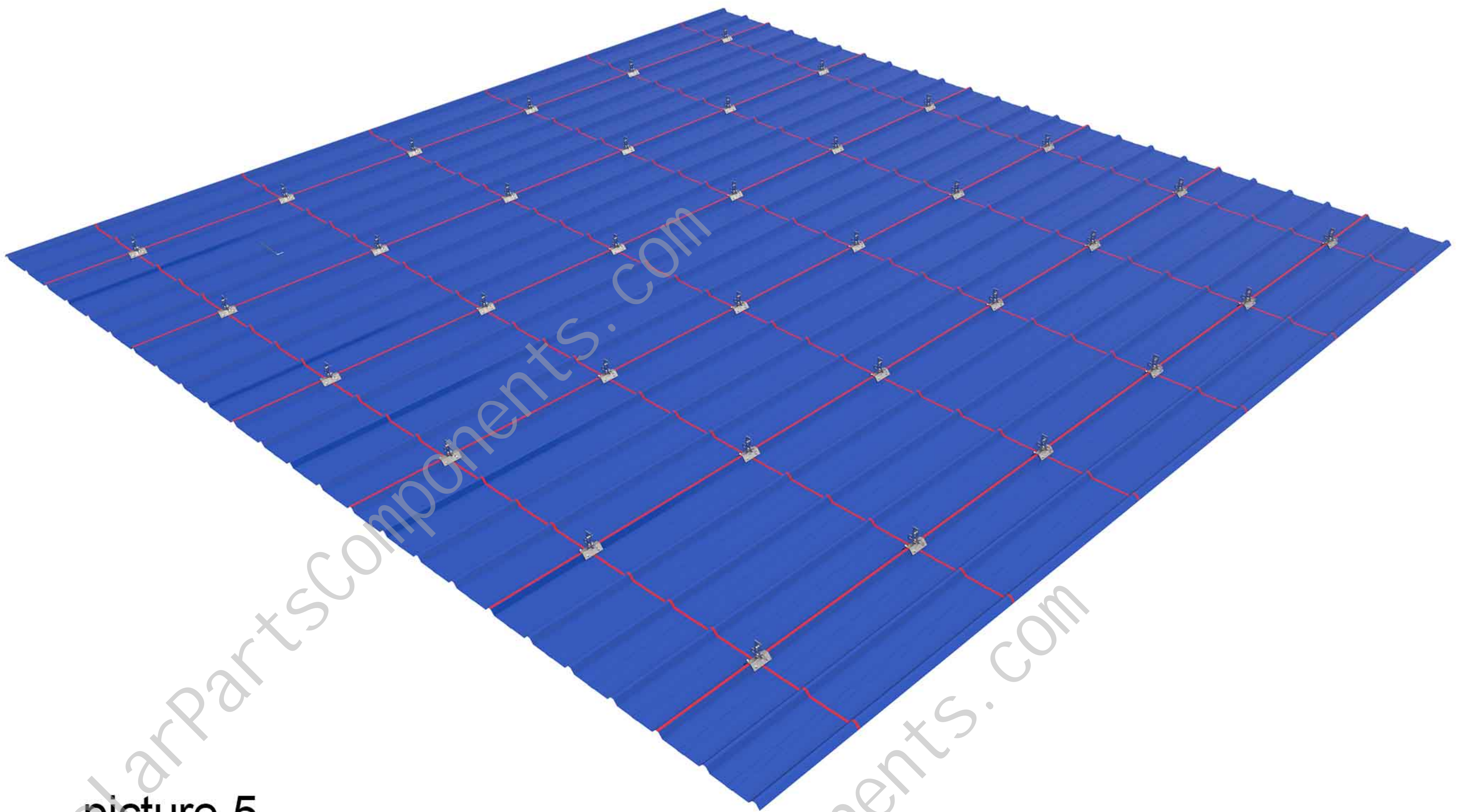
And fix the multifunctional clamp with four self-tapping screw (ST6.3 * 25), as picture 3.



After installation ,as picture 4 shows.

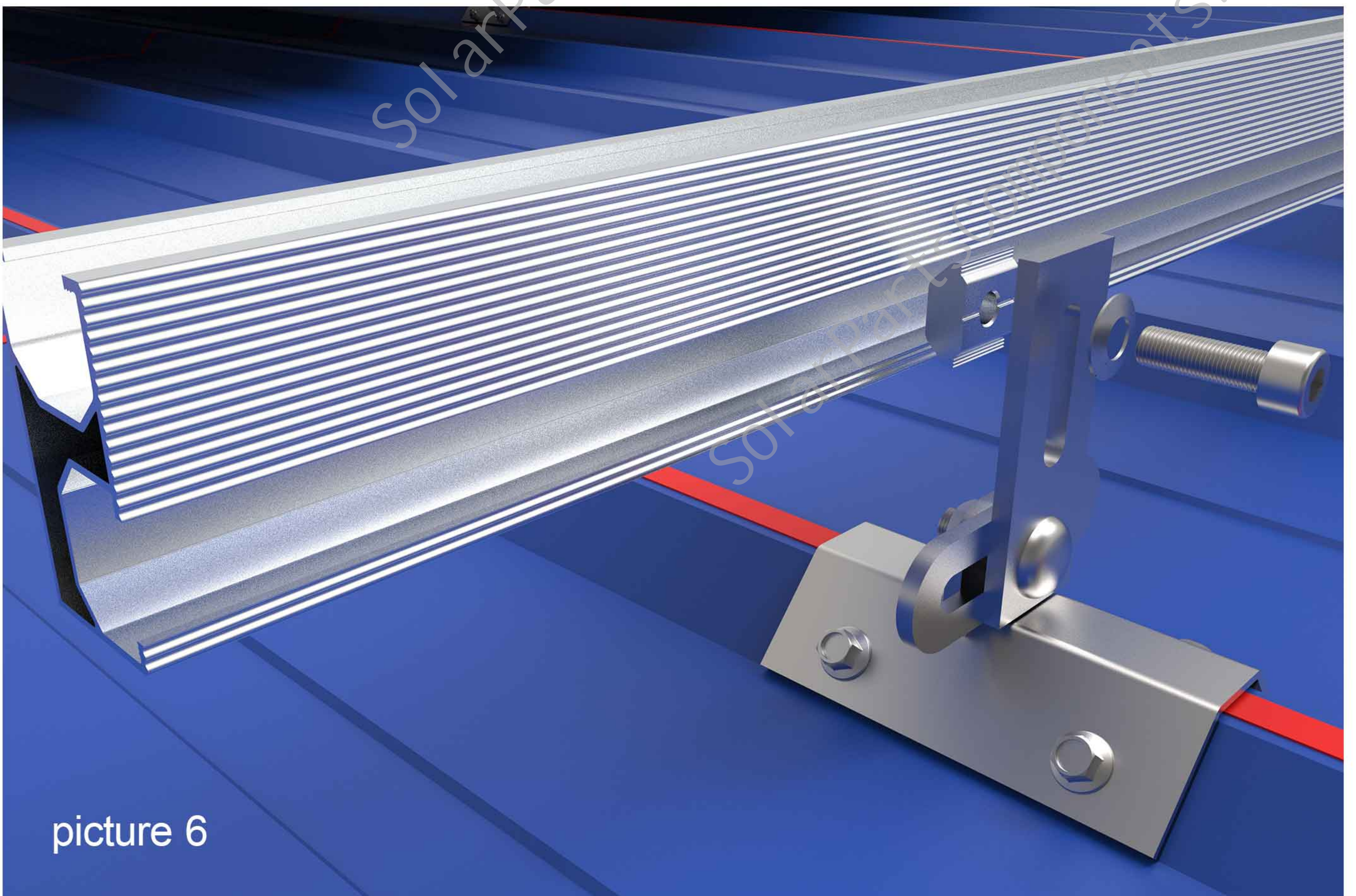


According to step 2, fix all the remaining multifunctional clamps on the tin roof according to the drawings. After installation, as picture 5 shows.



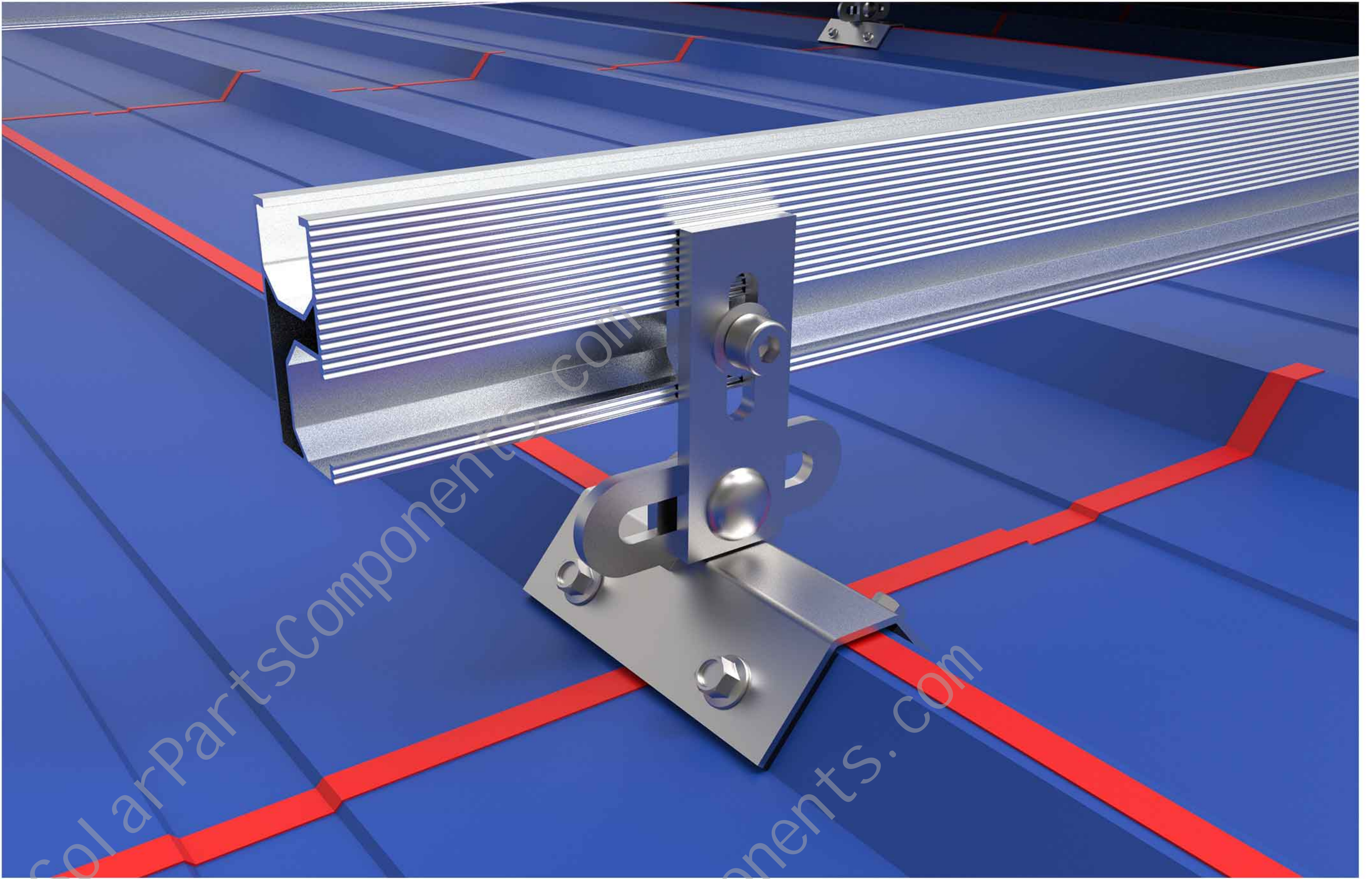
picture 5

step three, Use M8*25 clamp and bolts to install the H-rail on the multifunctional clamps. As picture 6 shows.

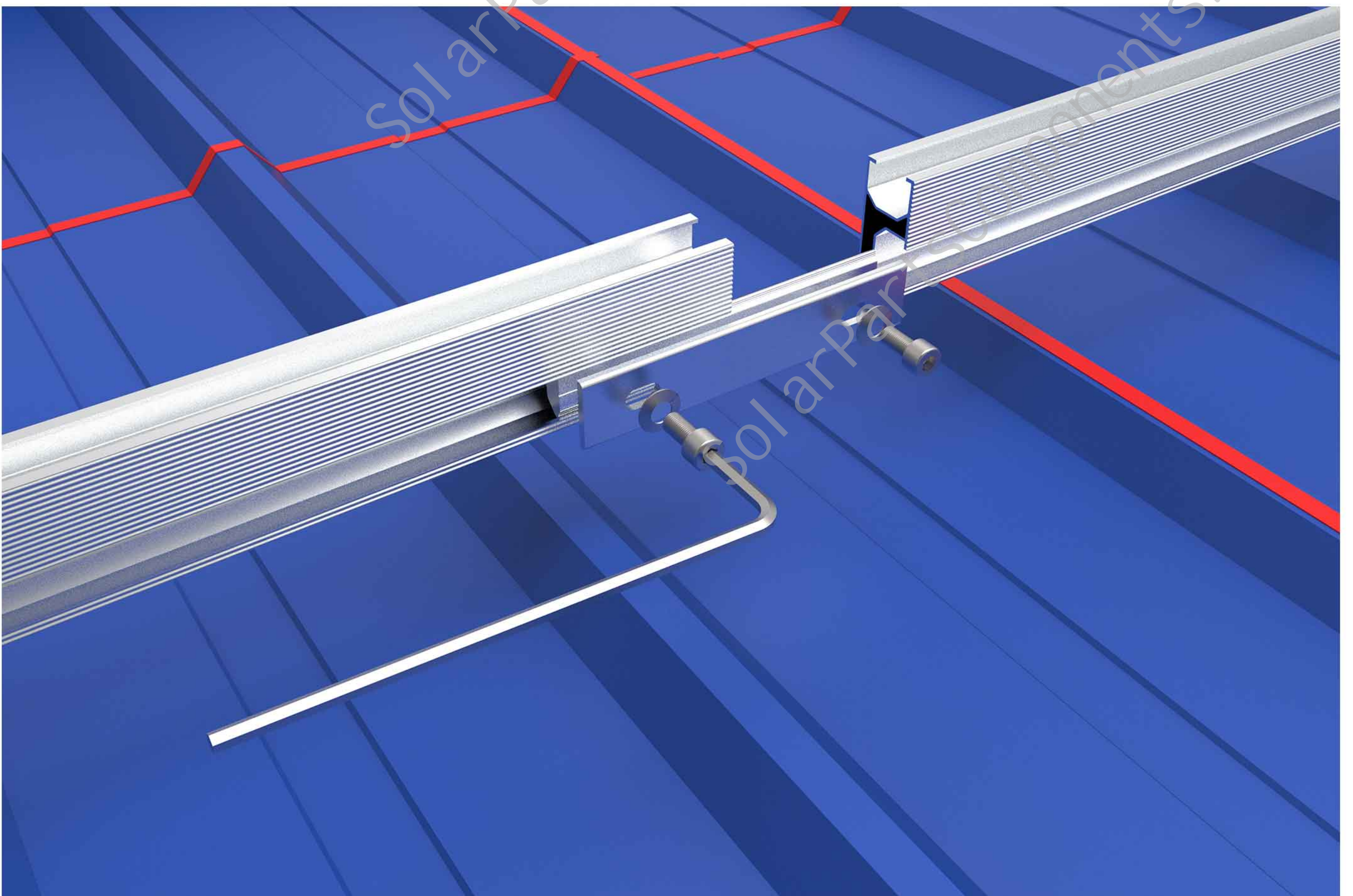


picture 6

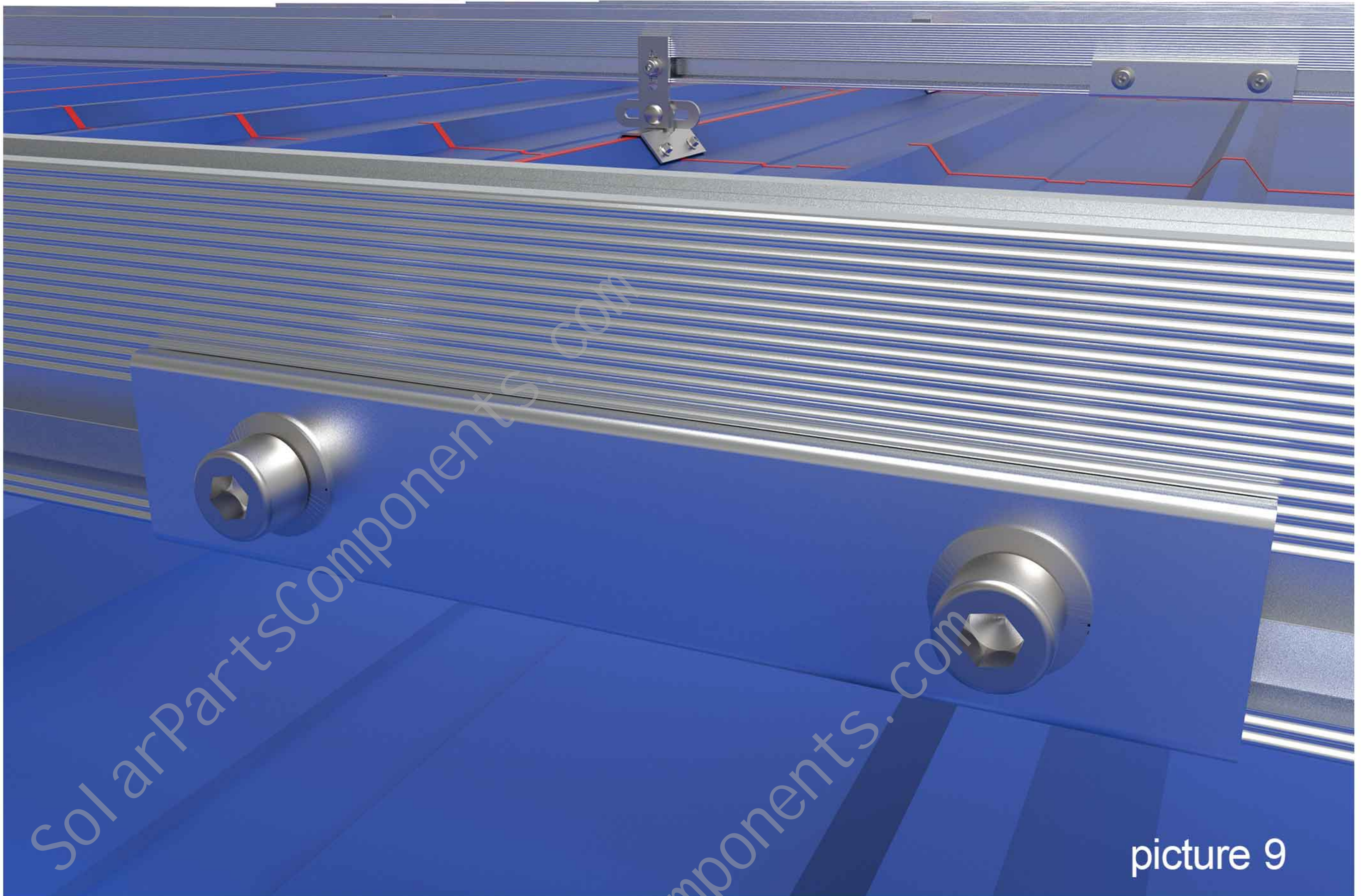
Effect after installation.



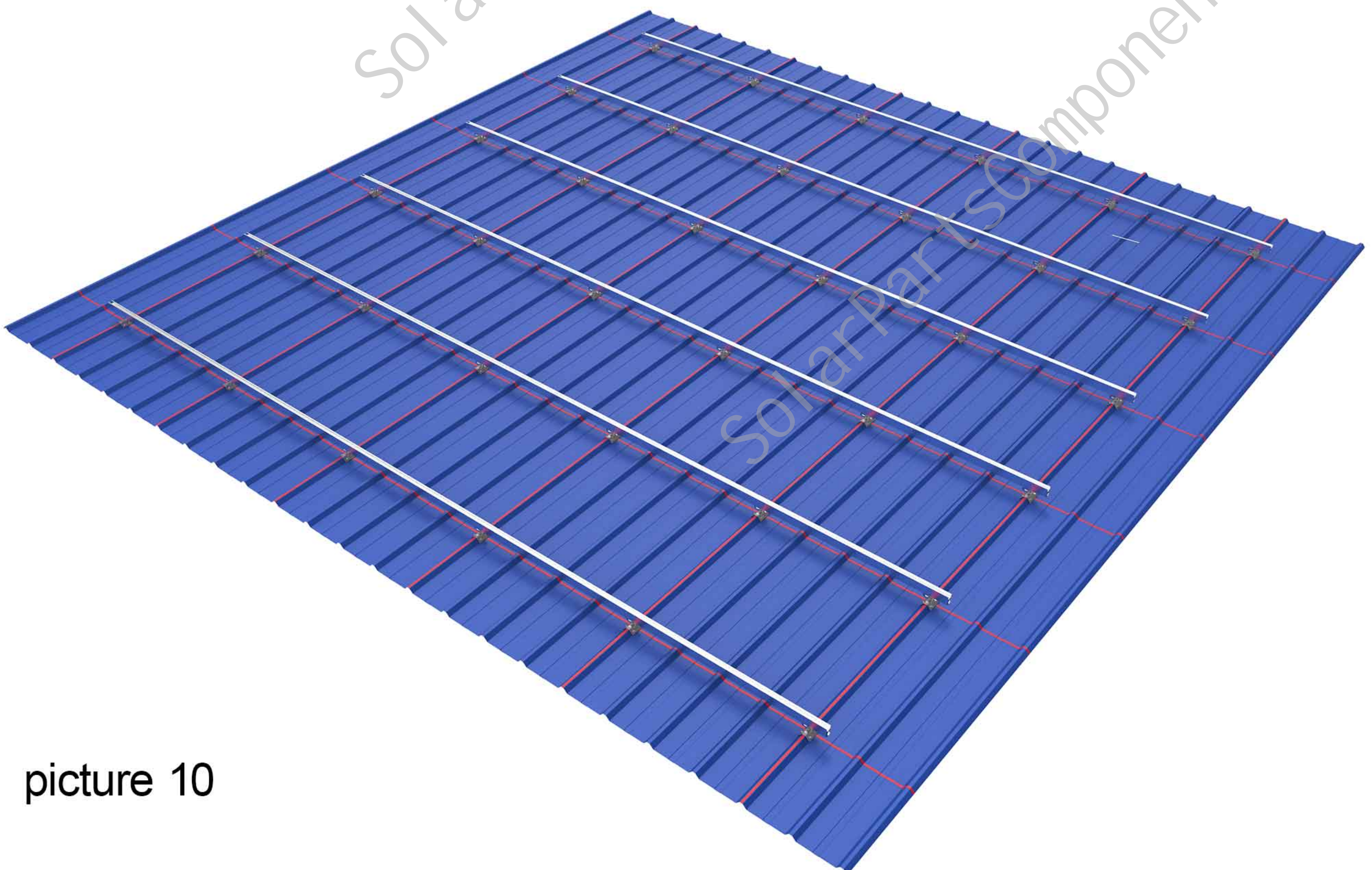
Step four, Use the rail splice for the connection between the rail and the rail, Insert the connector into the groove behind the rail, insert 75mm on each side, and then lock the bolts.



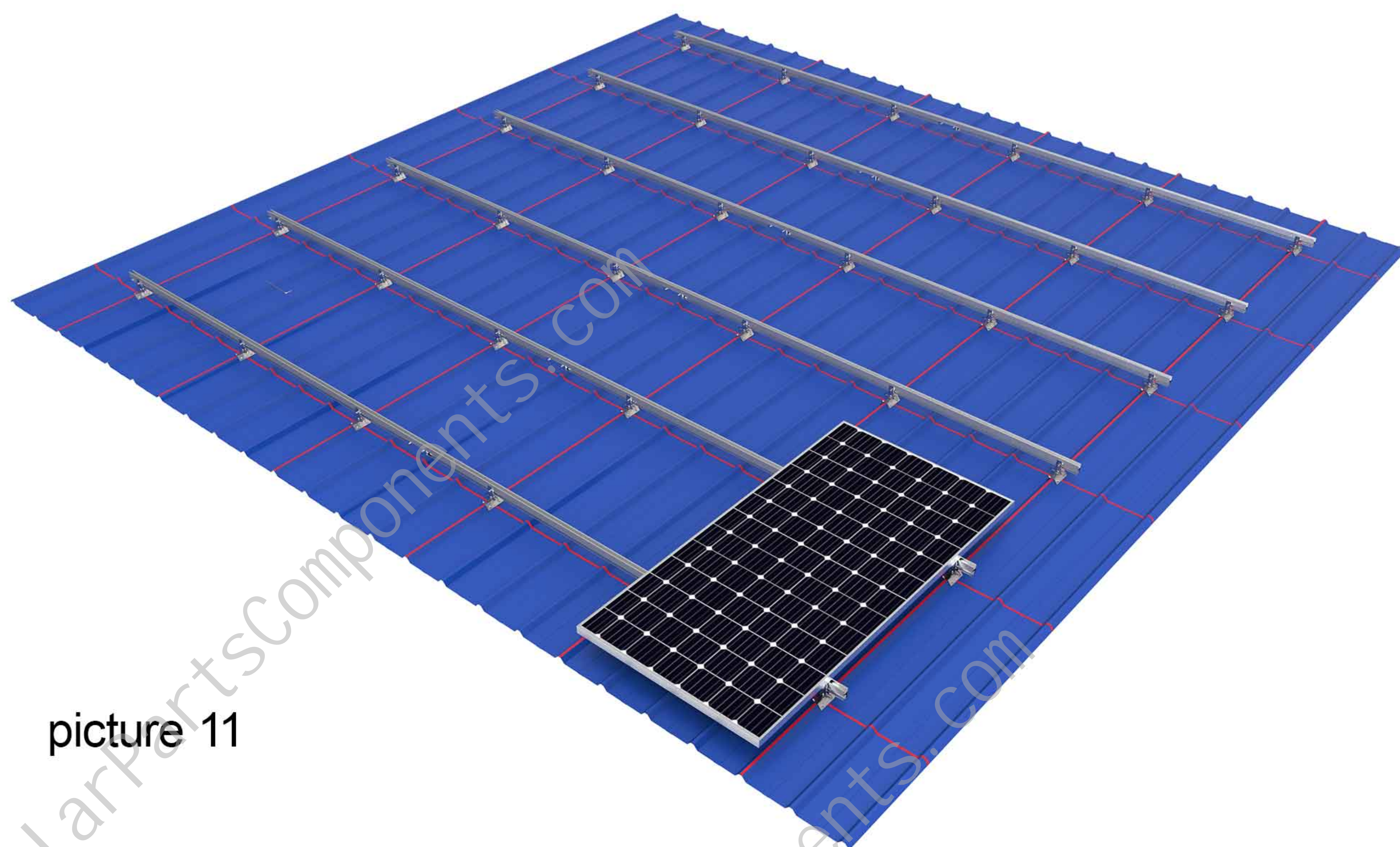
After installation ,as picture 9 shows.



According to the above steps, connect the rails with rail splice first, and then install the rails on the multifunctional clamps according to the construction drawings. After all the rails are installed, as picture 10 shows.

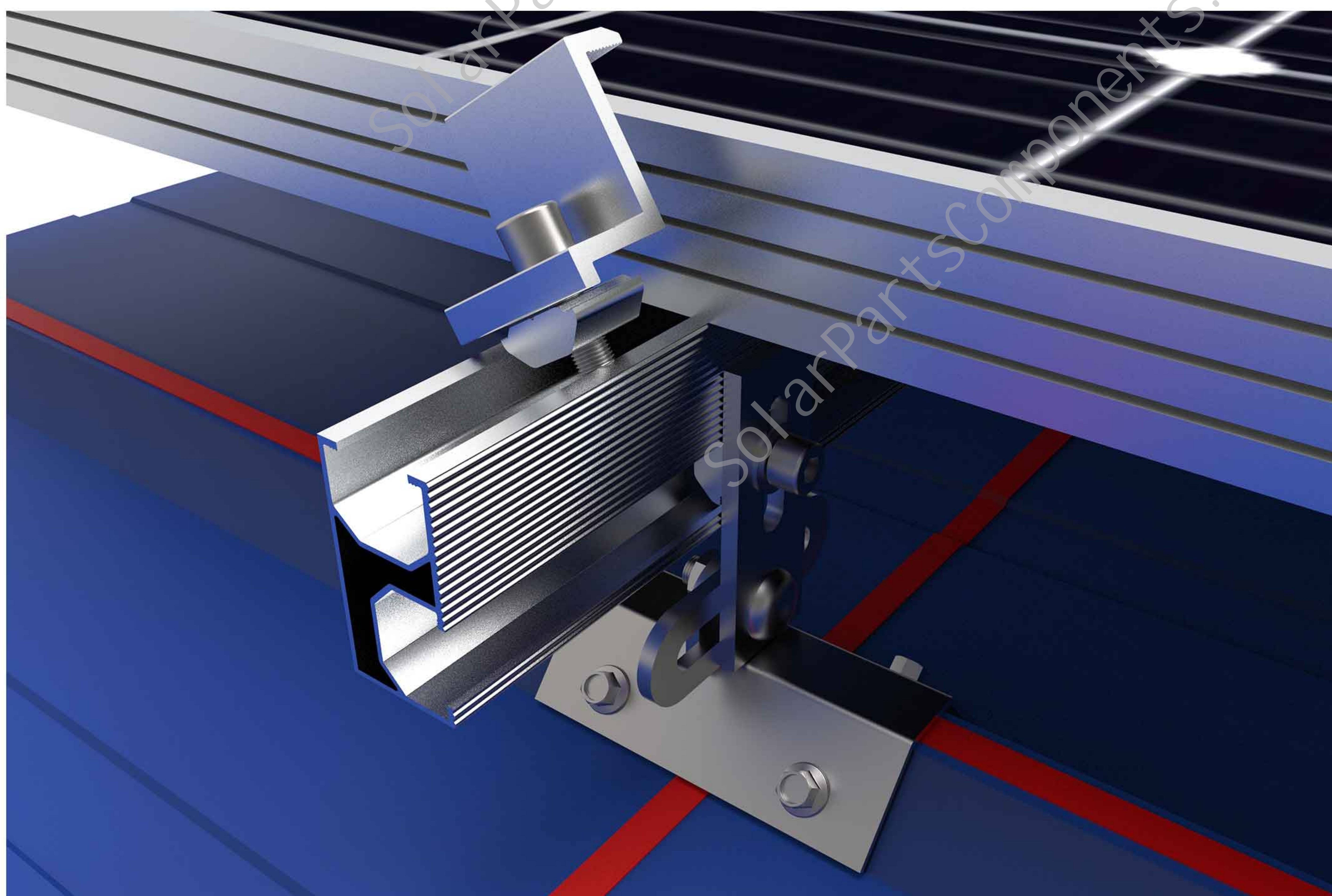


Step five, Put the panel vertically on the two rails, press the solar panel by hand at first to prevent the panel from sliding down, as picture 11 shows.

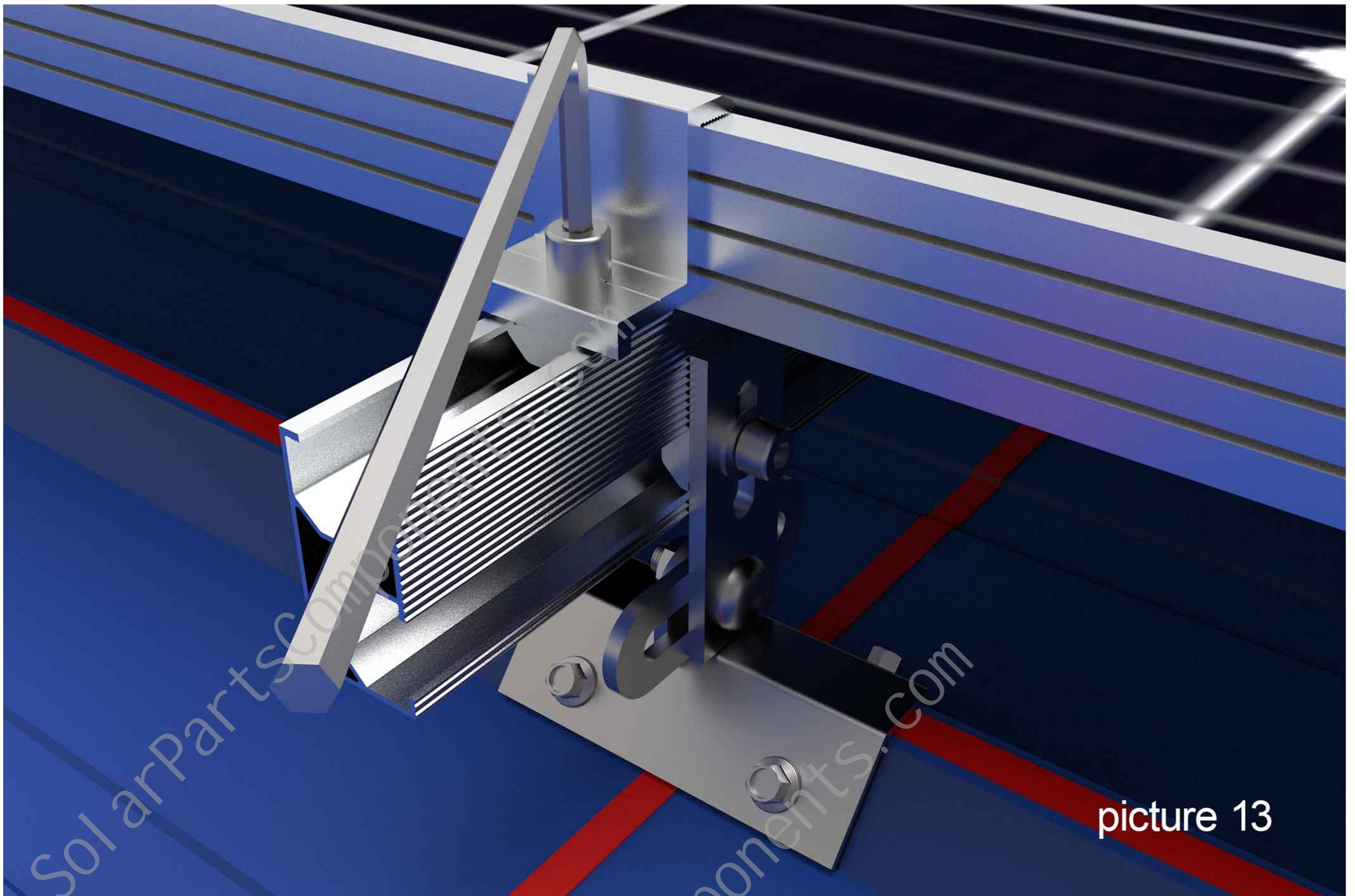


picture 11

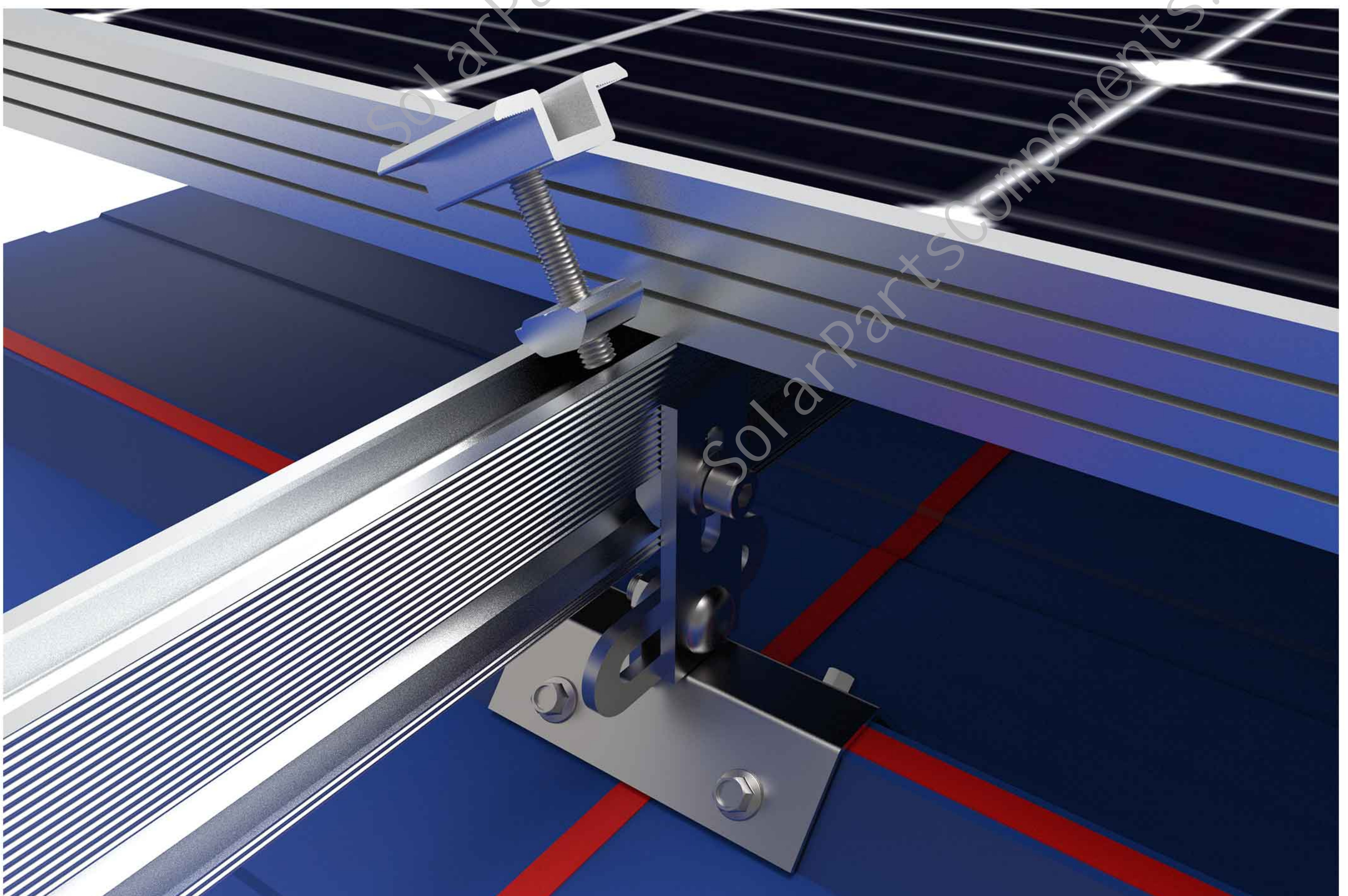
Step six, Use the end clamp to lock the side of panel, screw the clamp block on the mid clamp to the bottom of the bolt, and then put it sideways into the groove of the rail.



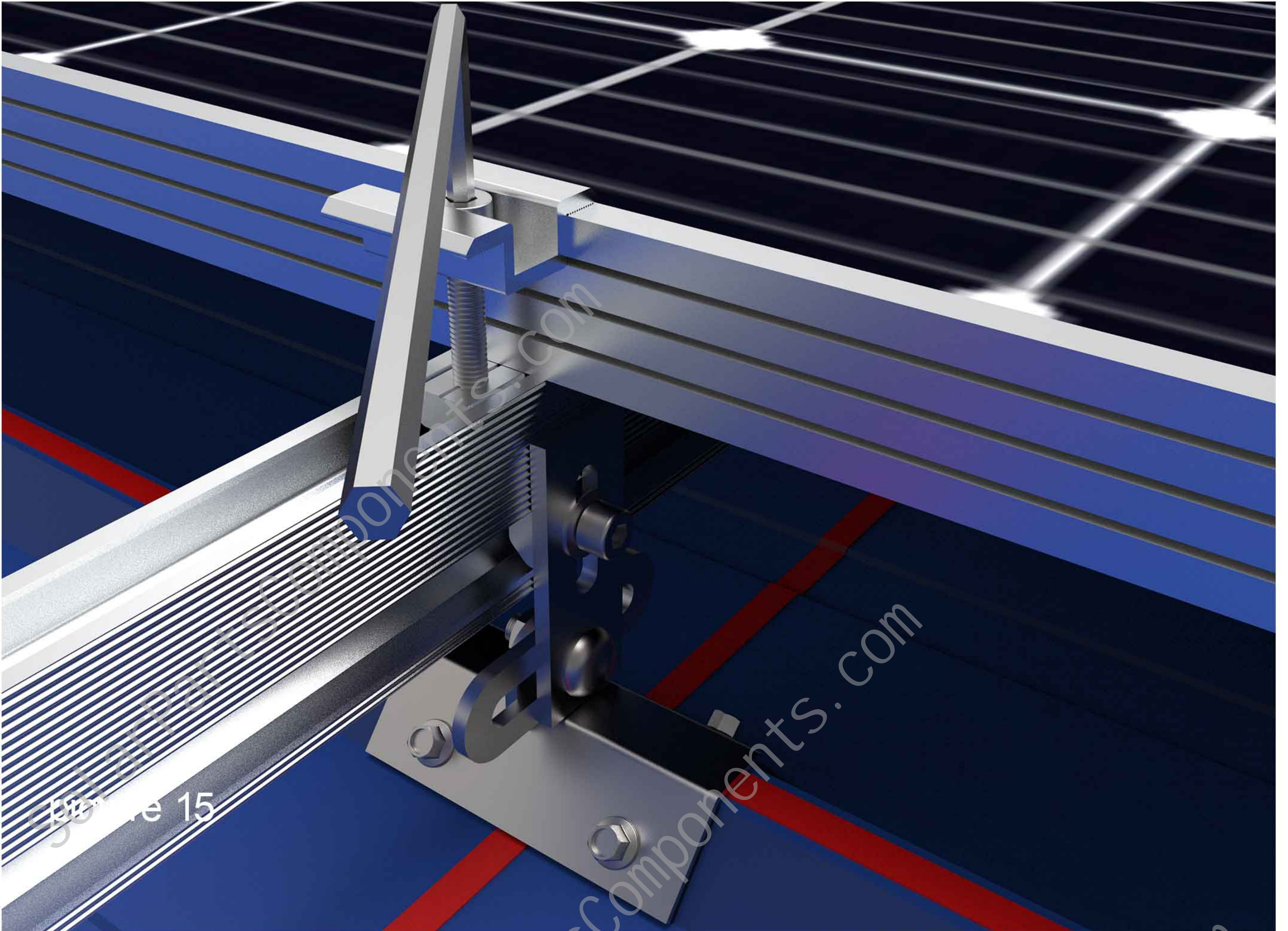
After install the end clamp, as the picture 13 shows.



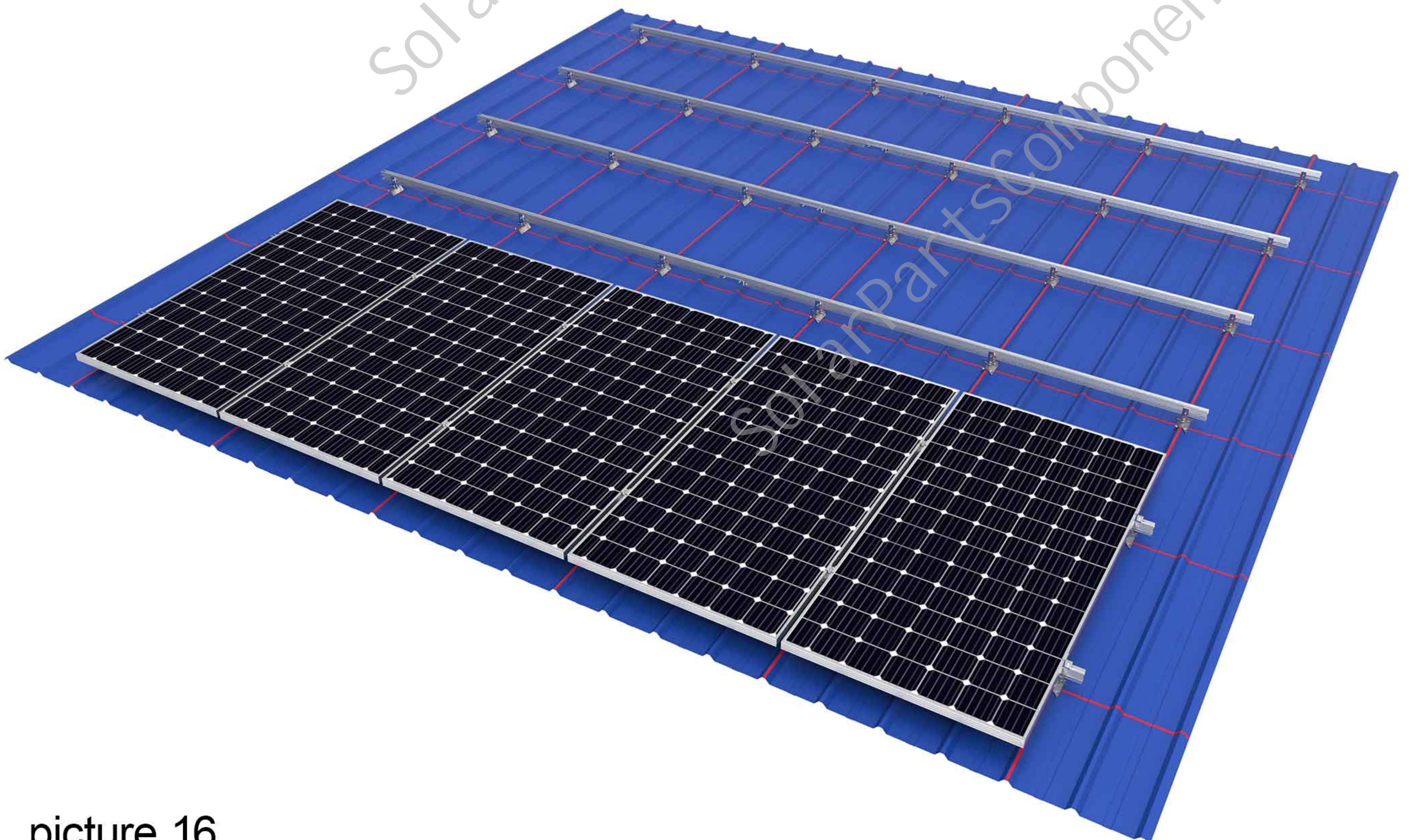
Step seven, The installation of the mid clamp is the same as that of the end clamp. First, screw the sliding nut on the mid clamp to the bottom of the bolt, and then put it sideways into the groove of the rail.



After install the mid clamp, as the picture 15 shows.



According to the above steps, use the mid clamp to install the panels, as the picture 16 shows.

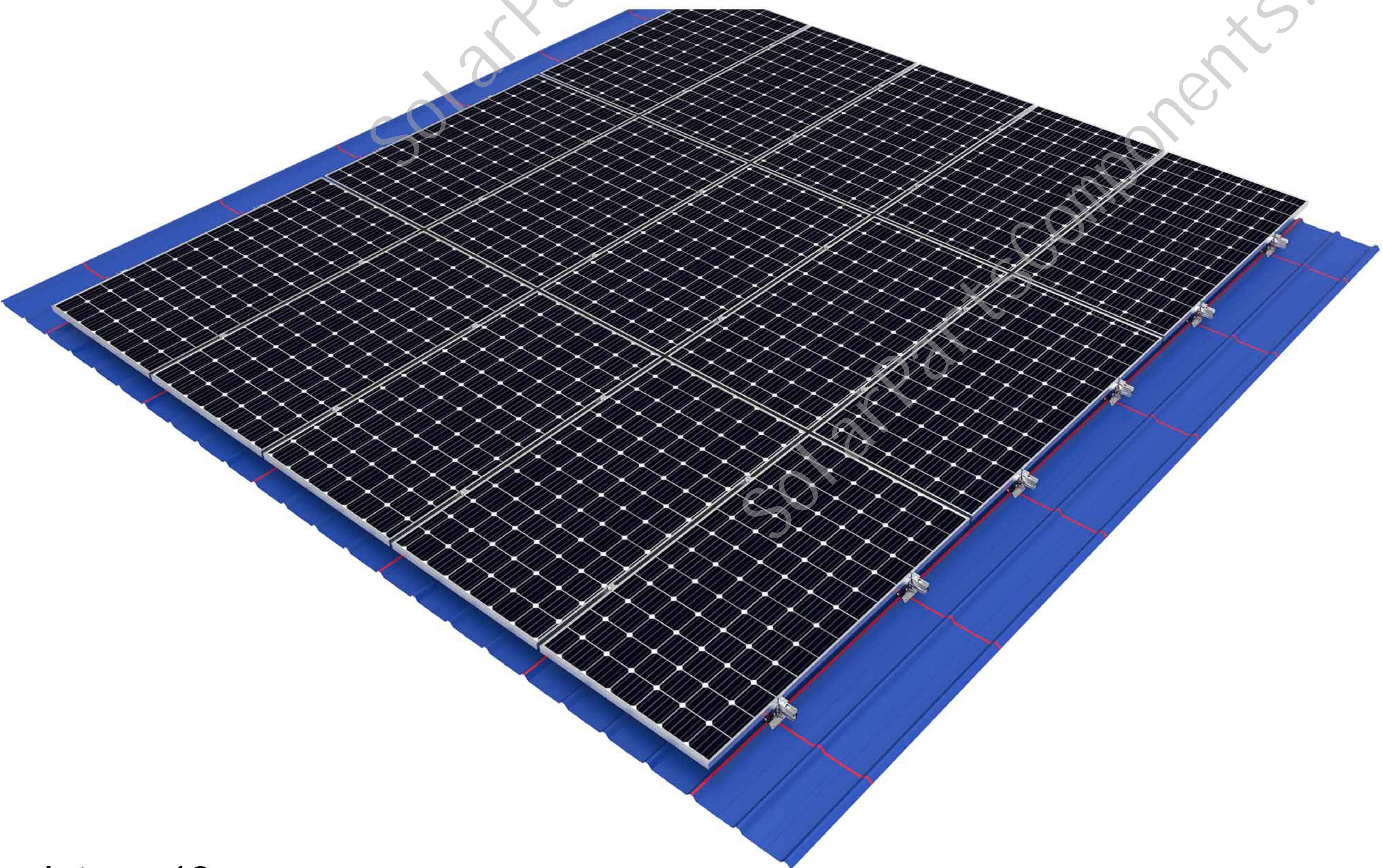


picture 16

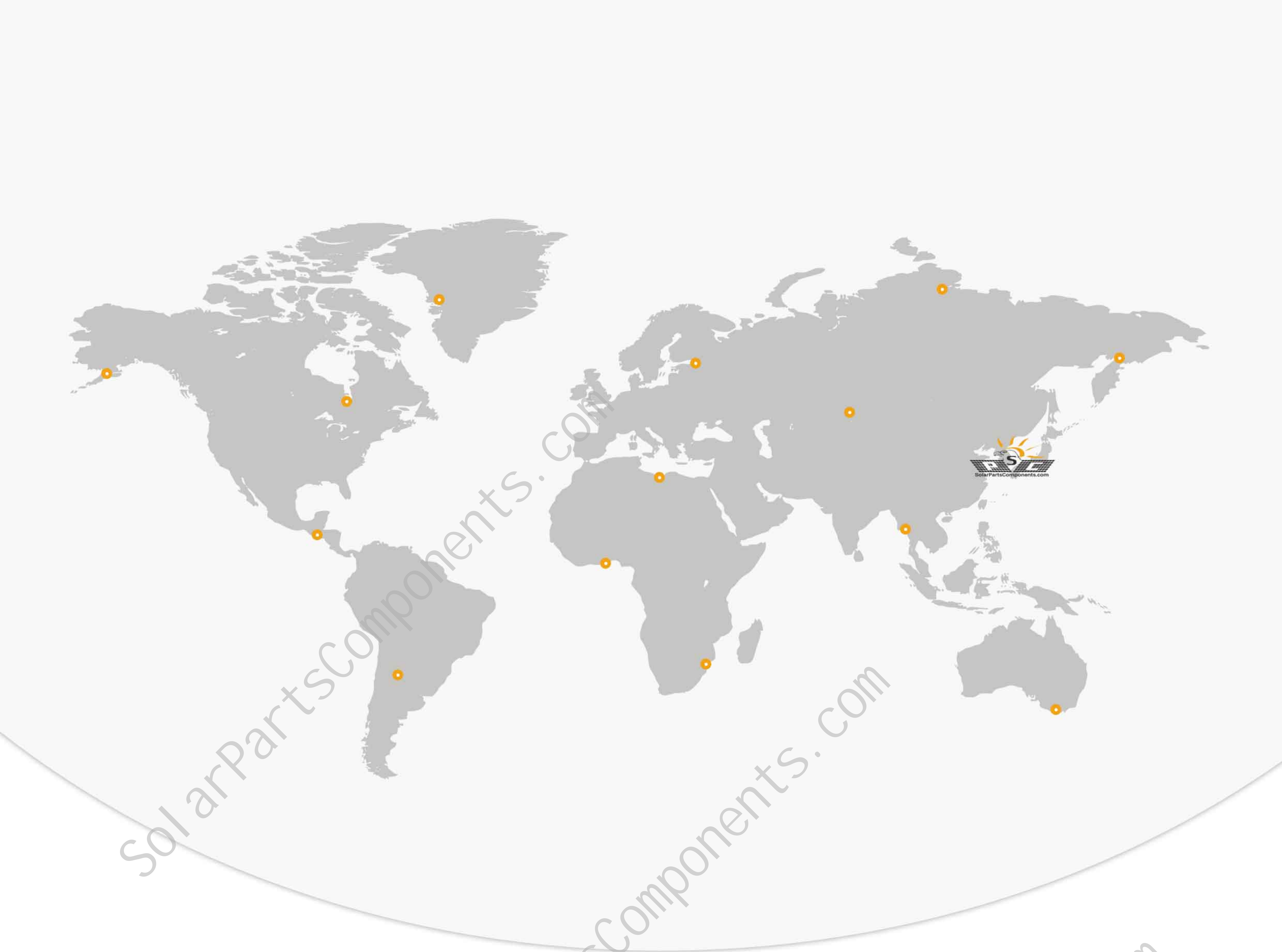
After the overall installation as the picture 17-18.



picture 17



picture 18



Solar Mounting Parts & Components Factory



SolarPartsComponents.com
XIAMEN TOP BEST TECH CO.,LTD
Info@SolarPartsComponents.com

