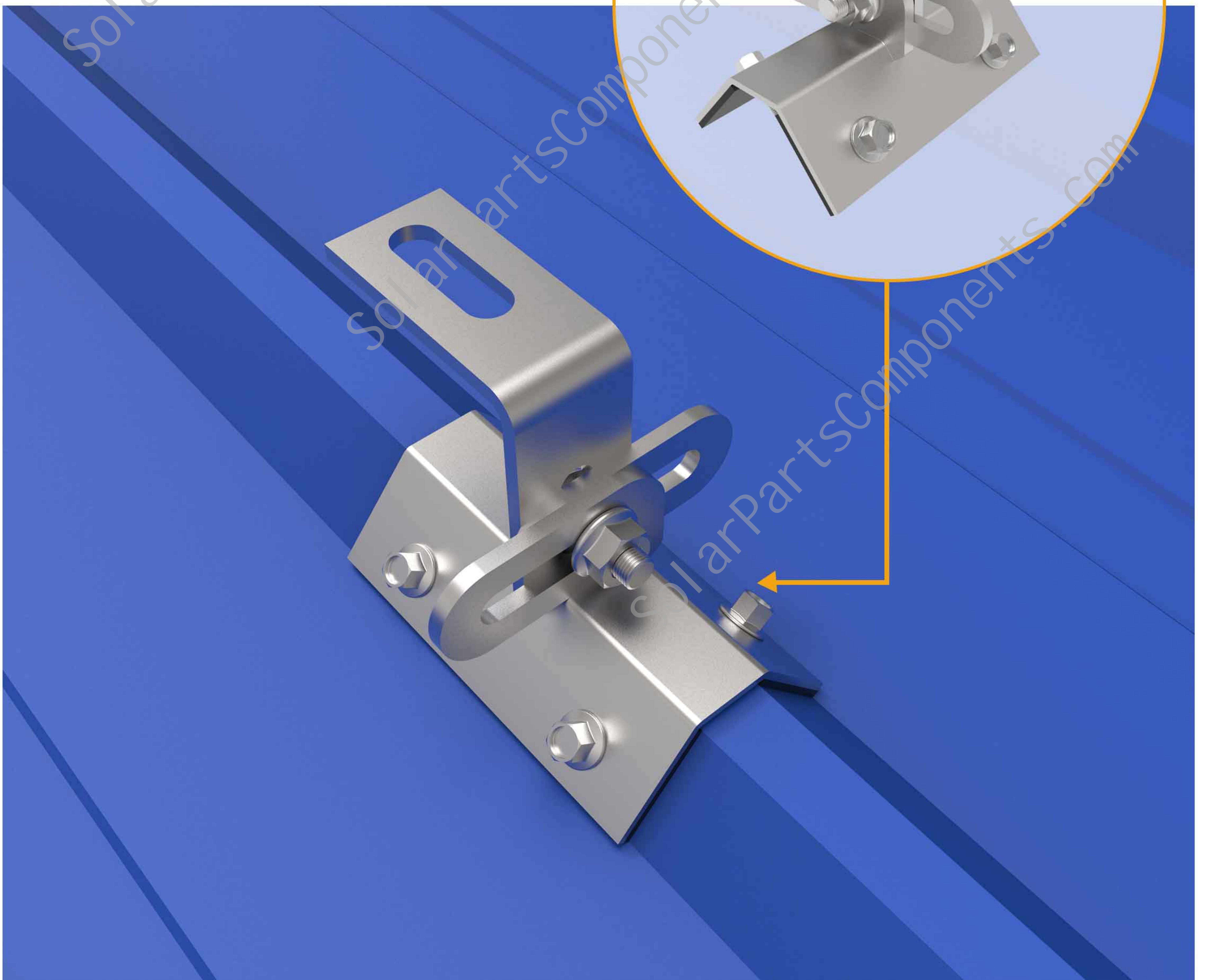




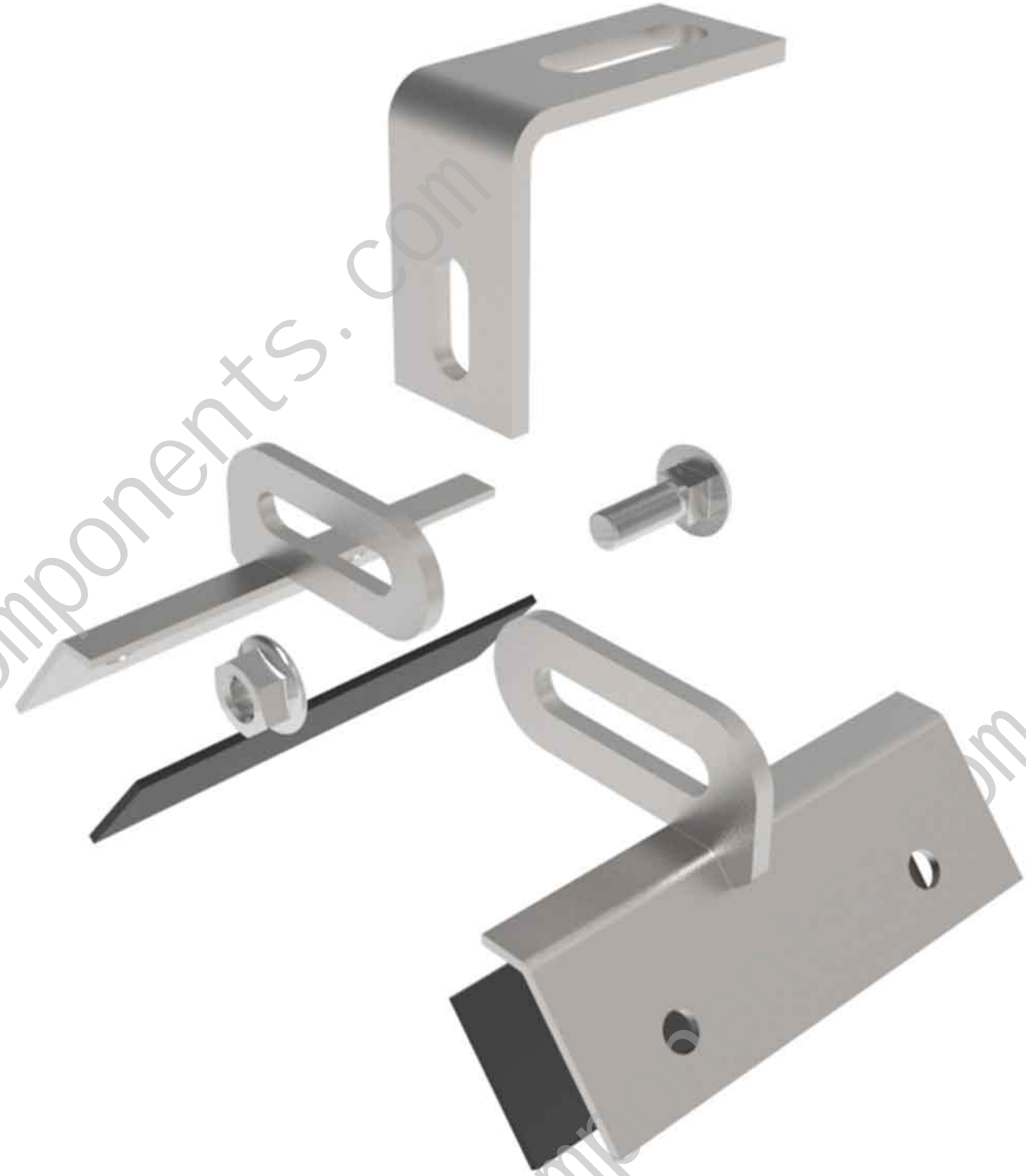
ROOF SOLUTION

Multifunctional Bracket Installation Manual

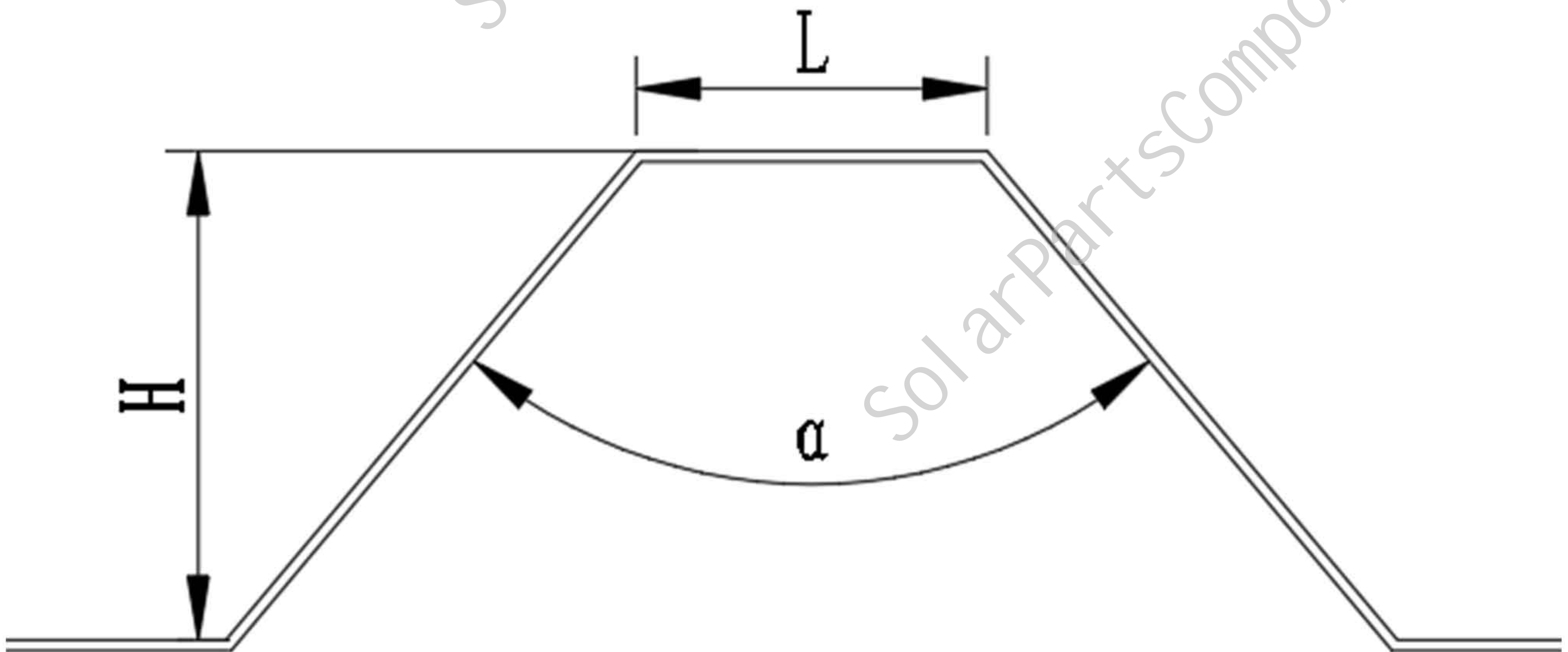


Multifunctional bracket Installation Manual

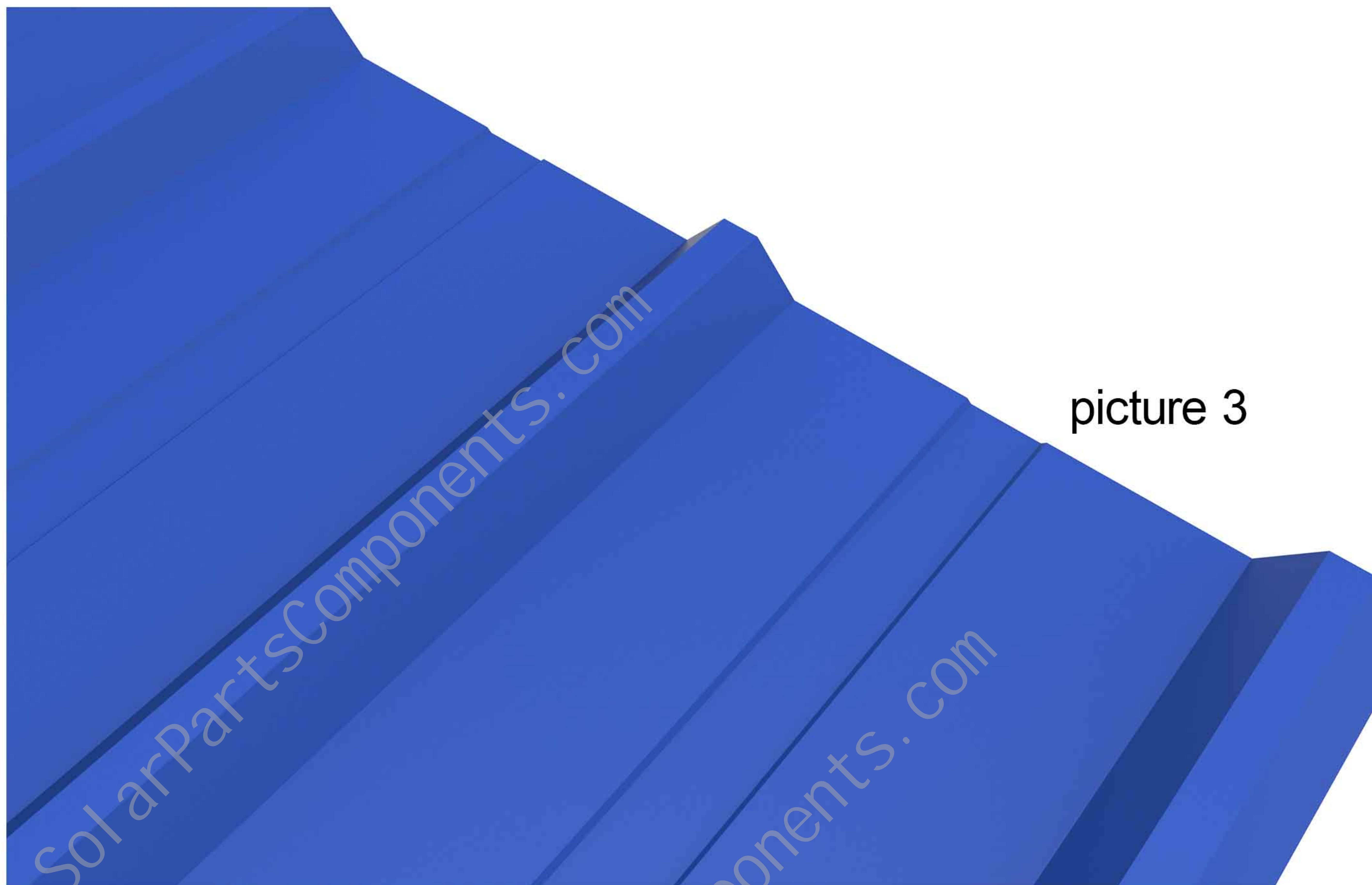
Step one, Multifunctional metal roof bracket can be fitting most trapezoidal sheet profiles, It consists of left part, right part, L connector, screw bolts and waterproof Rubber Pad composed of five parts.



Multifunctional metal roof bracket is designed long holes, so the size of corresponding trapezoid metal tile is certain limited. $70\text{mm} \geq L \geq 16\text{mm}$, $80^\circ \geq \alpha \geq 0^\circ$, $H \geq 25\text{mm}$.



Step three, Please clean the dirt from the surface of trapezoid metal tile and dry it with cloth. As shownen photo 3



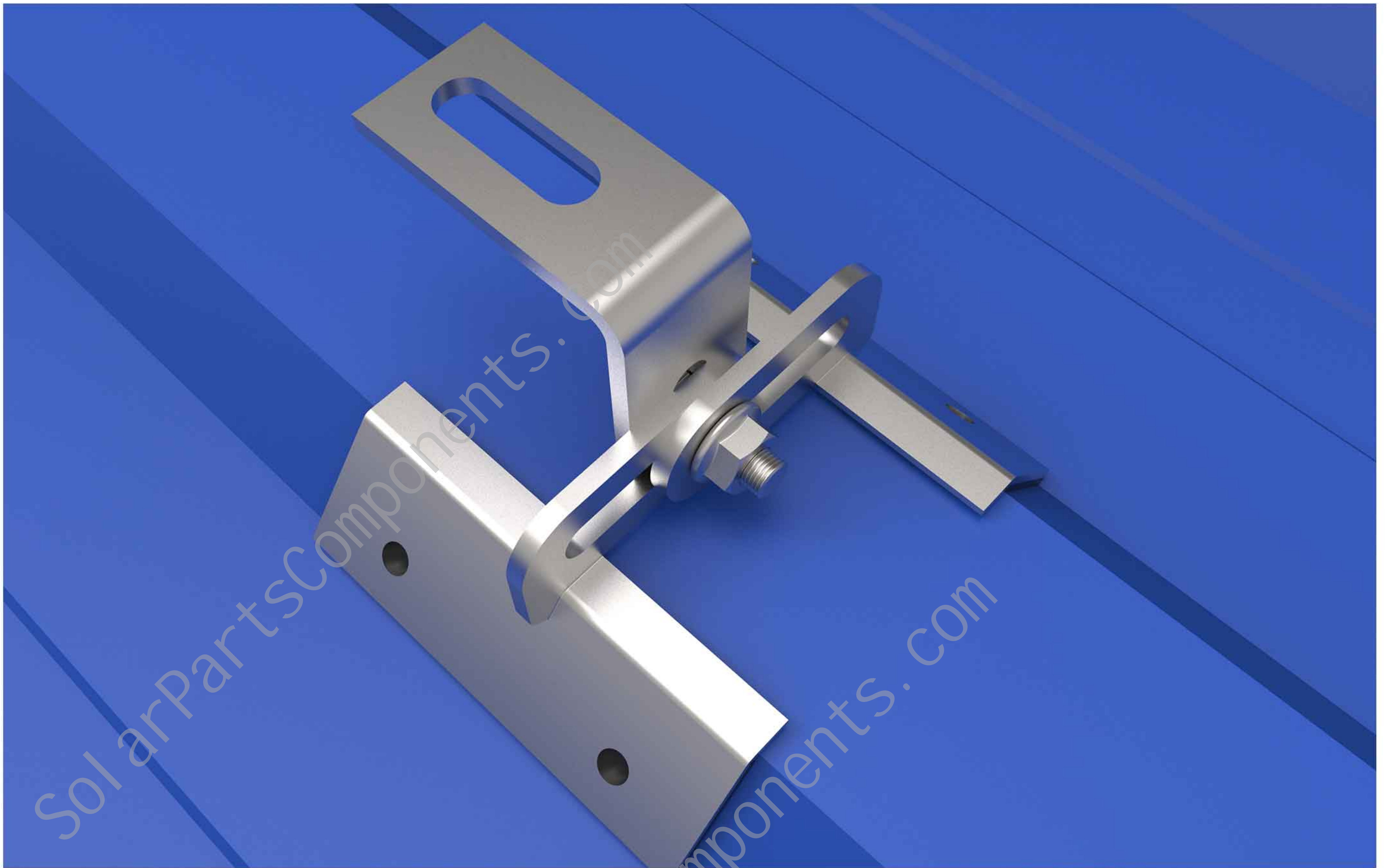
picture 3

Step four, Pls loosen Flange Nut and Adjust the shape of hook according to different sizes of trapezoid metal tile, The waterproof rubber pad shall be tightly attached to the side of the wave crest of the trapezoid metal tile. As shown photo 4

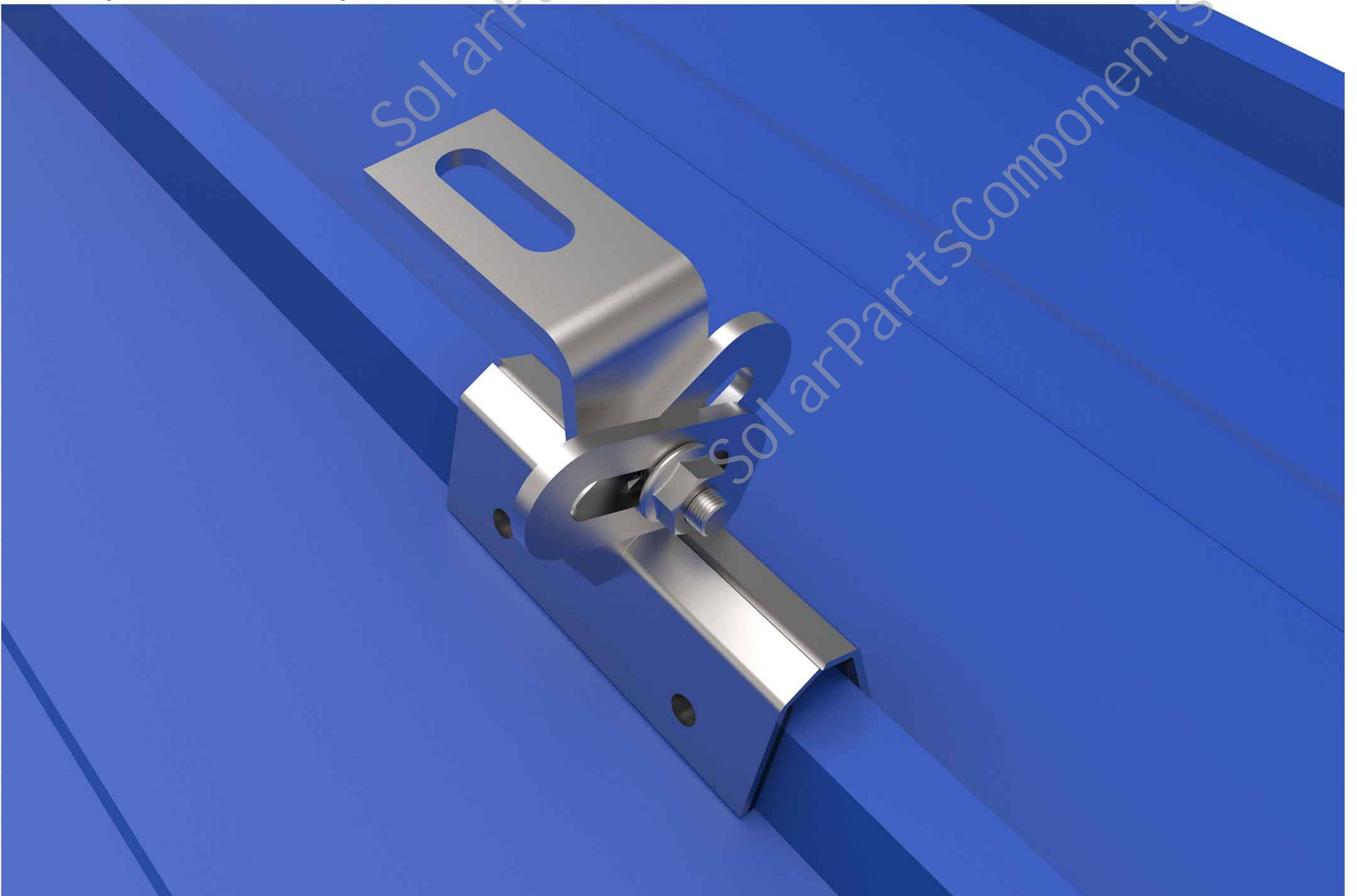


picture 4

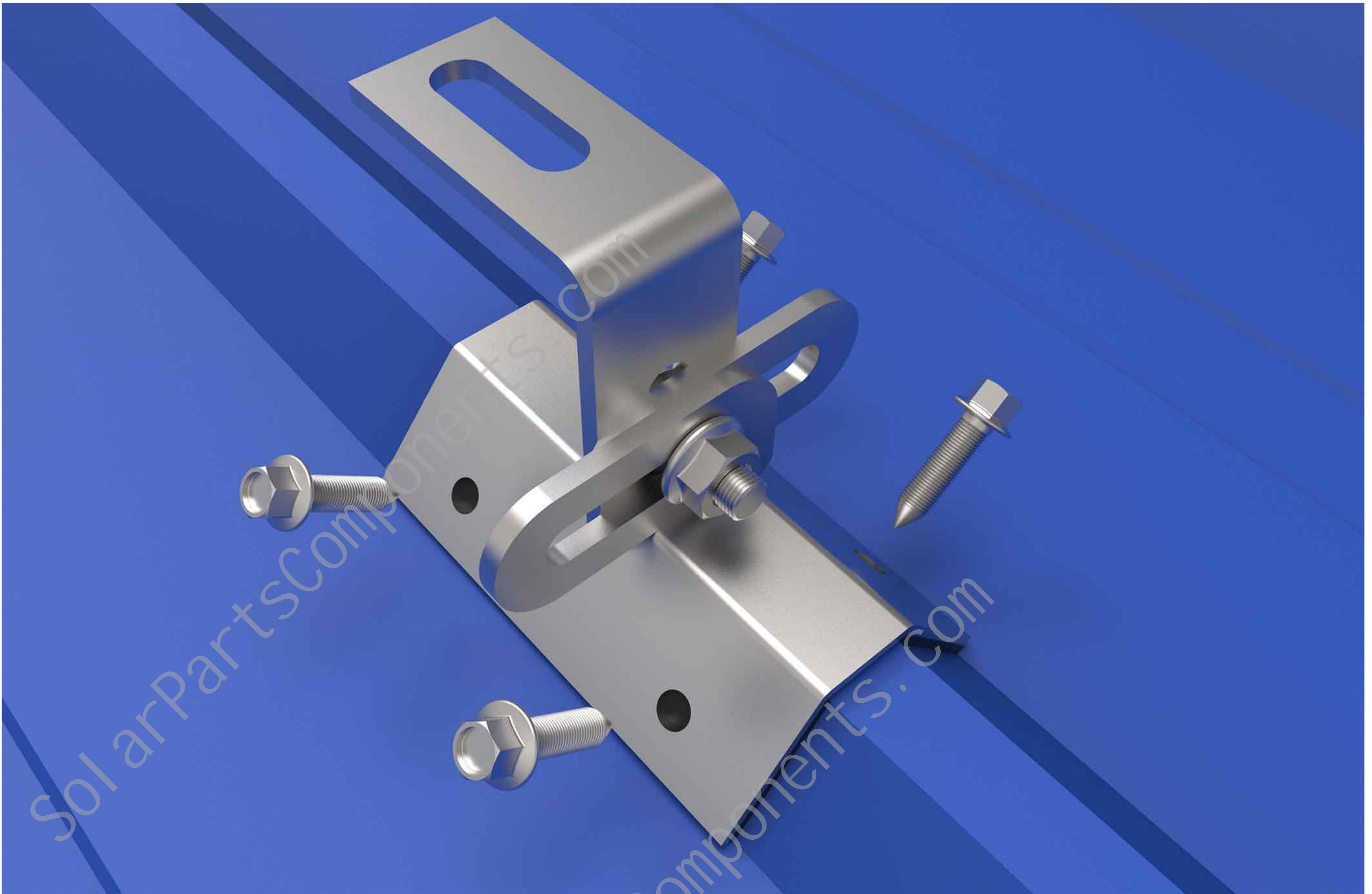
Step five, When the upper edge of the trapezoid metal tile is long, pull out the left and right parts of the hook, and at the same time the waterproof rubber pad should be attached to the side of the metal tile



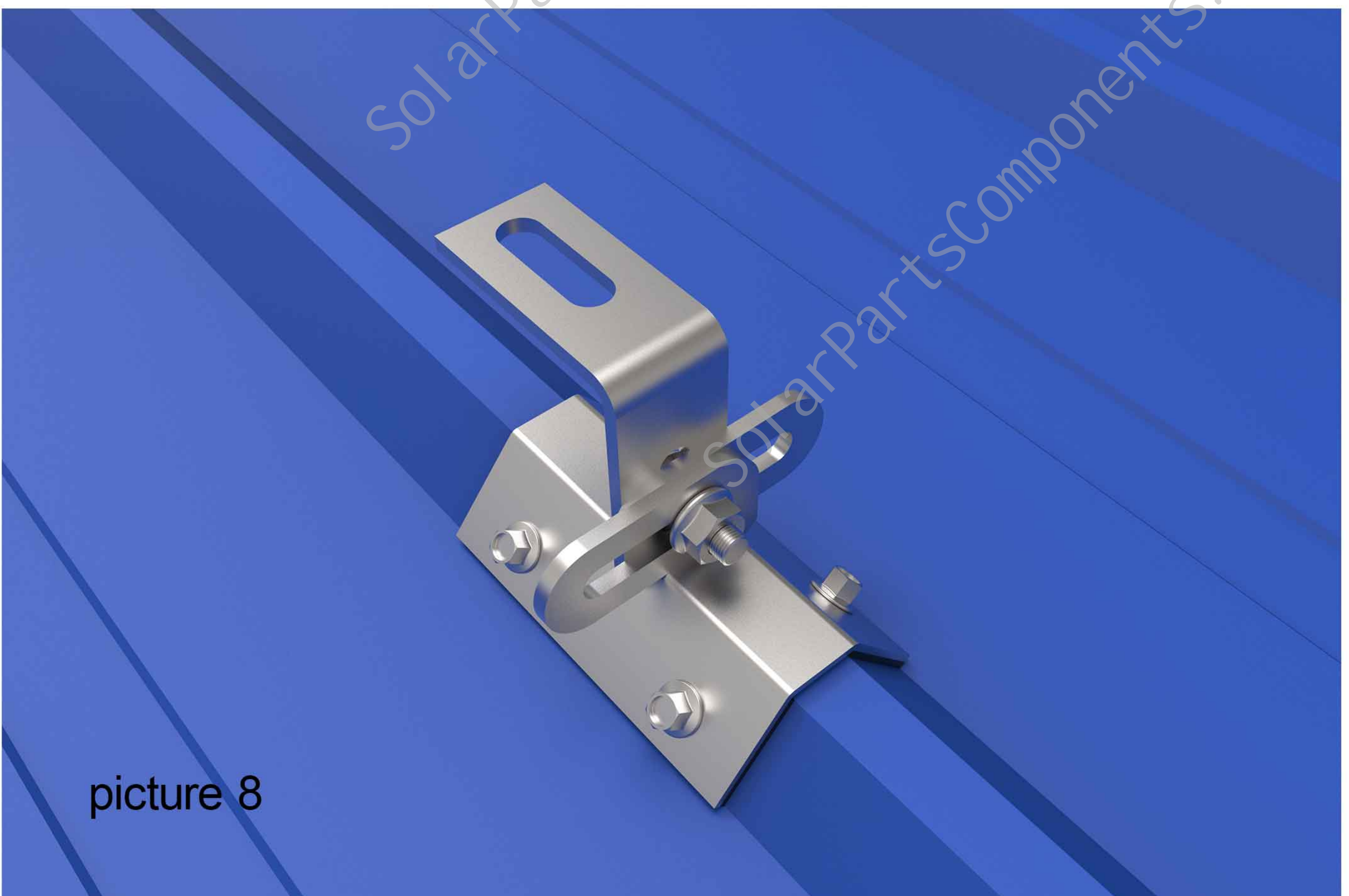
Step six, When the included angle α of the trapezoidal metal tile is small, rotate the hook around the trapezoidal center line to ensure that the waterproof rubber pad is close to the side of the metal tile



Step six, After adjusting the position of the bracket, and keep the rubber pad is tightly close on the metal tile, and then screwing the provided self-tapping stainless steel screws into the metal roof

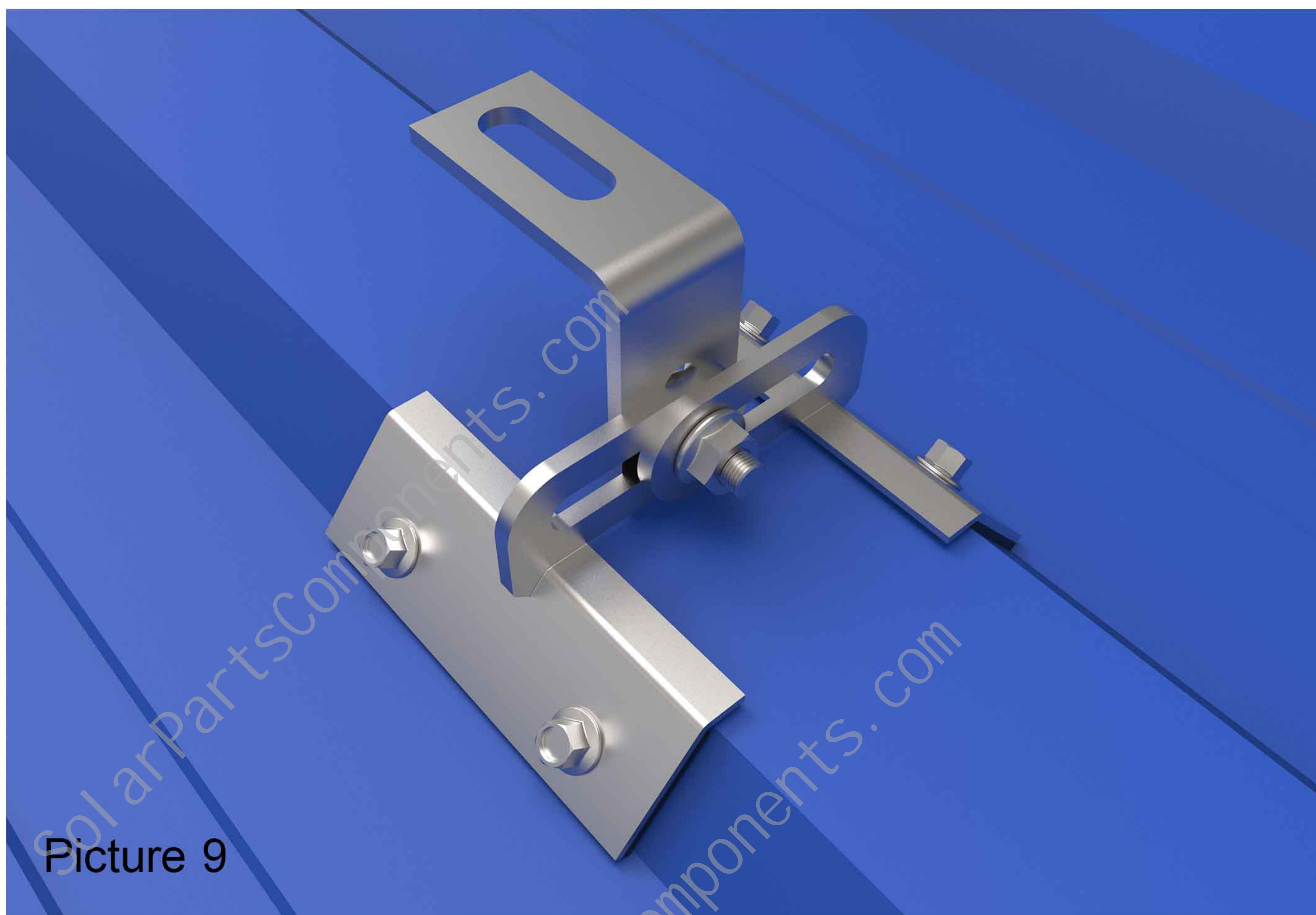


Effect after installation. As picture 8 shows.

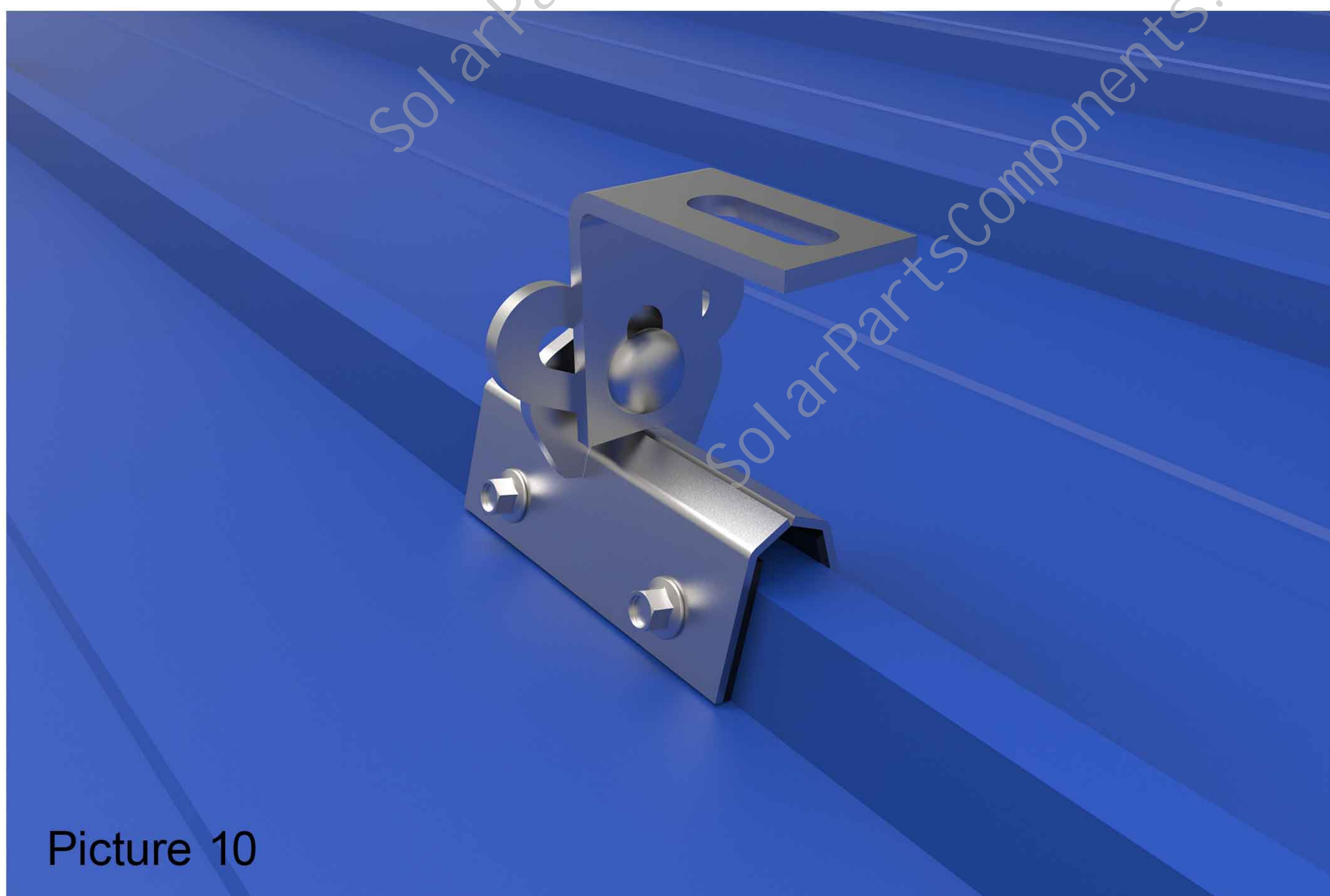


picture 8

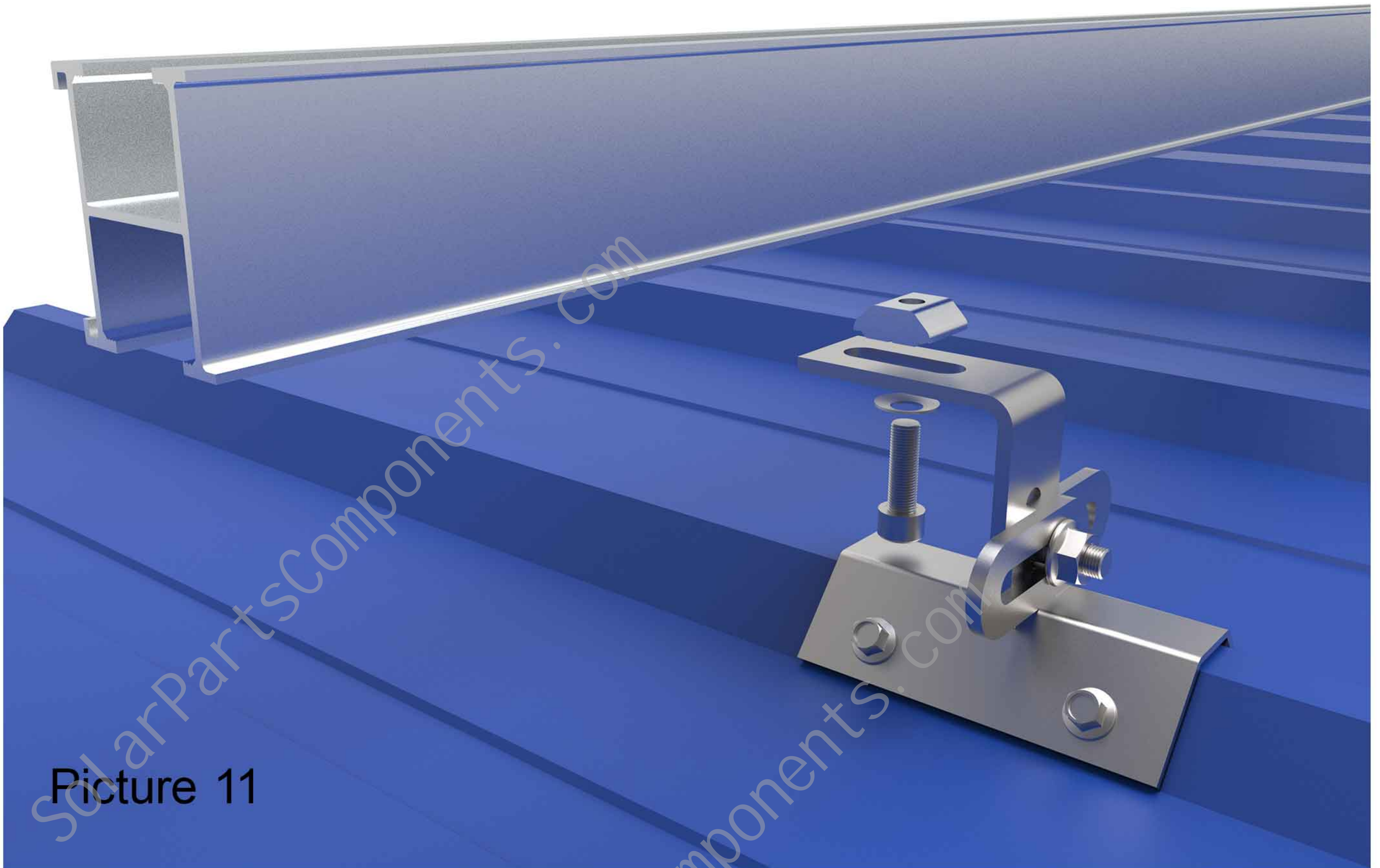
Effect after installation. As picture 9 shows.



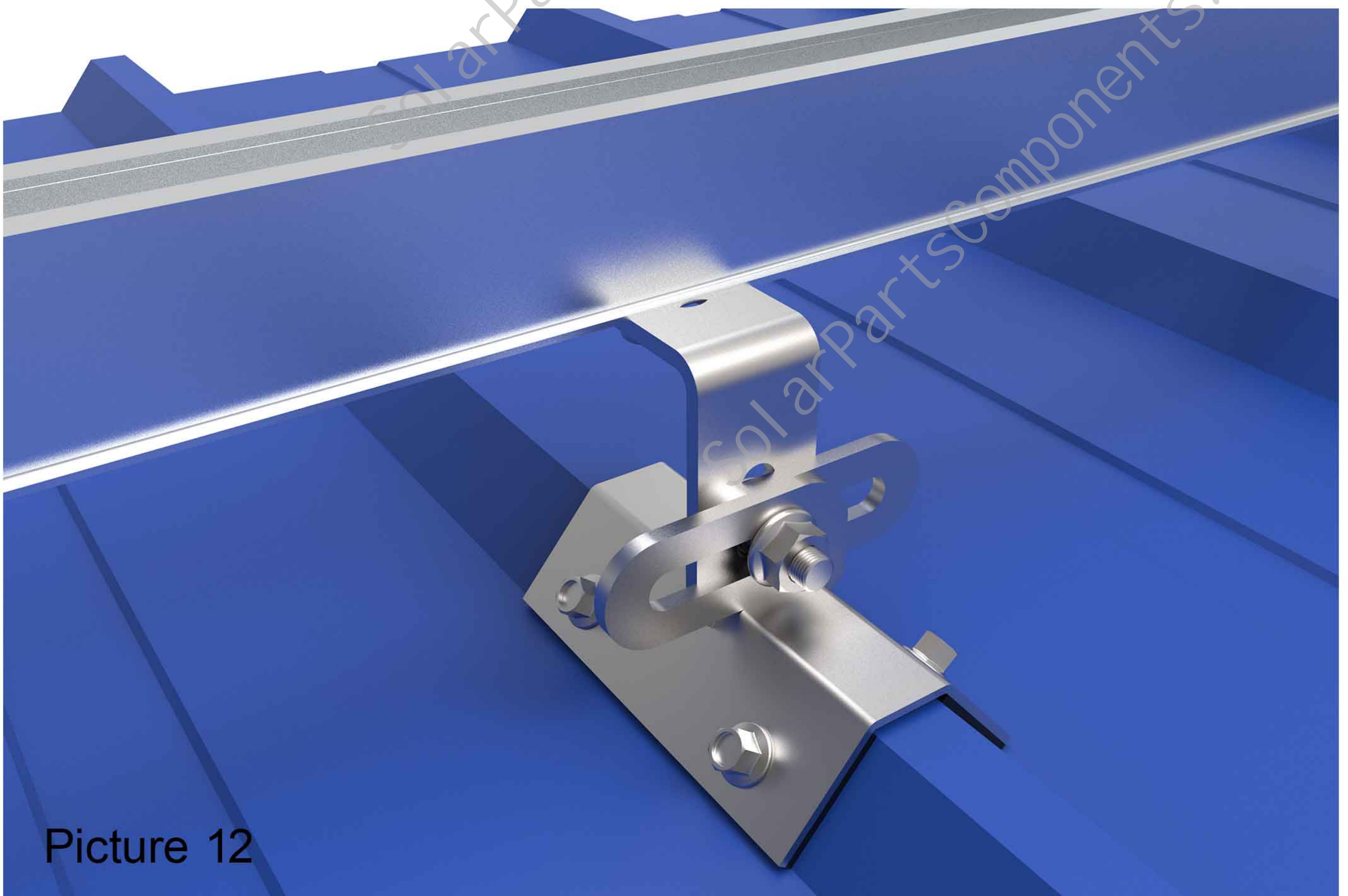
Effect after installation. As picture 10 shows.

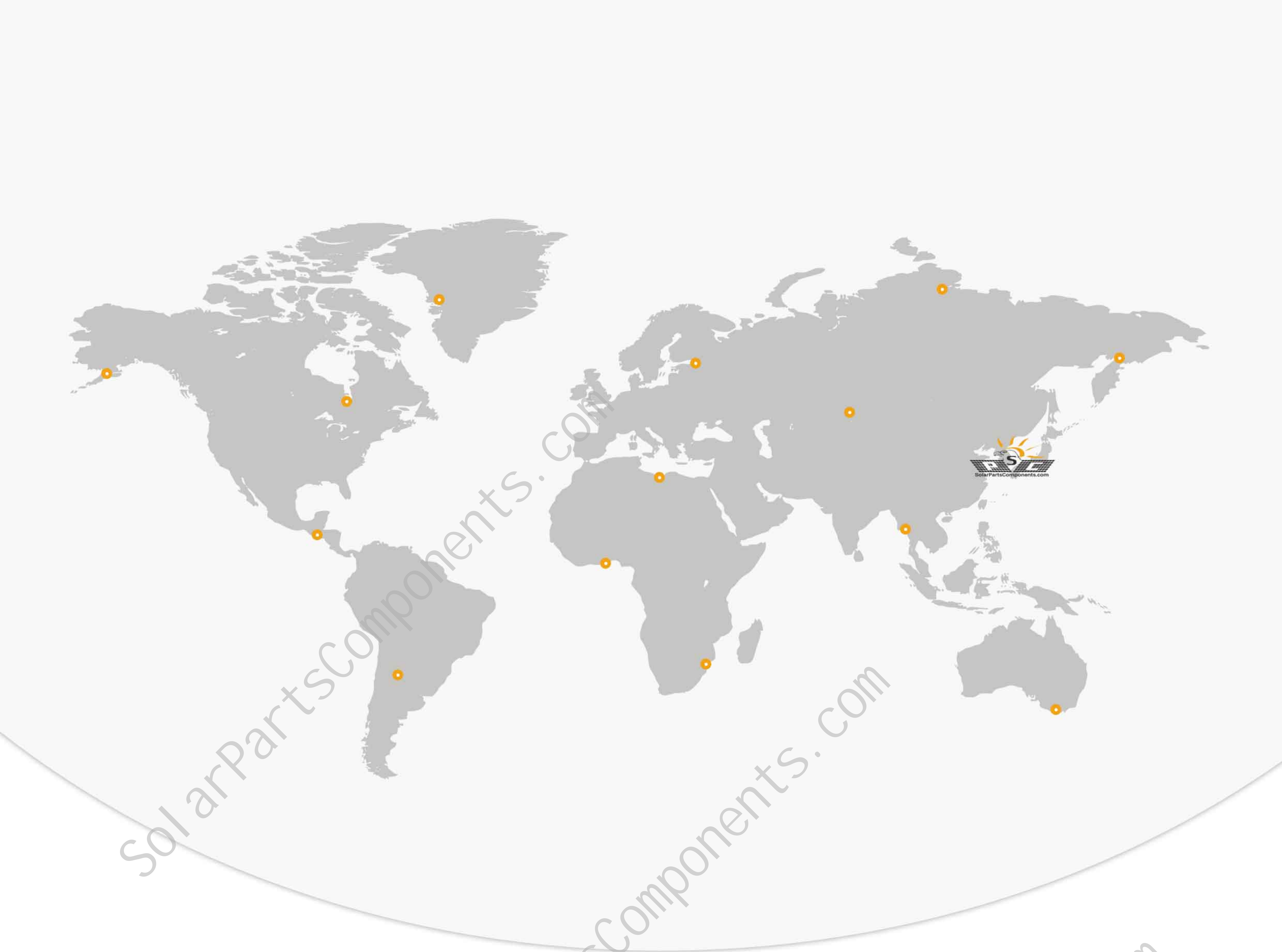


Step seven, Install the rail on the bracket by using M8*25 module and screw bolts. as shown photo 11.



after installation as shown photo 12





Solar Mounting Parts & Components Factory



SolarPartsComponents.com
XIAMEN TOP BEST TECH CO.,LTD
Info@SolarPartsComponents.com

