



ROOF SOLUTION

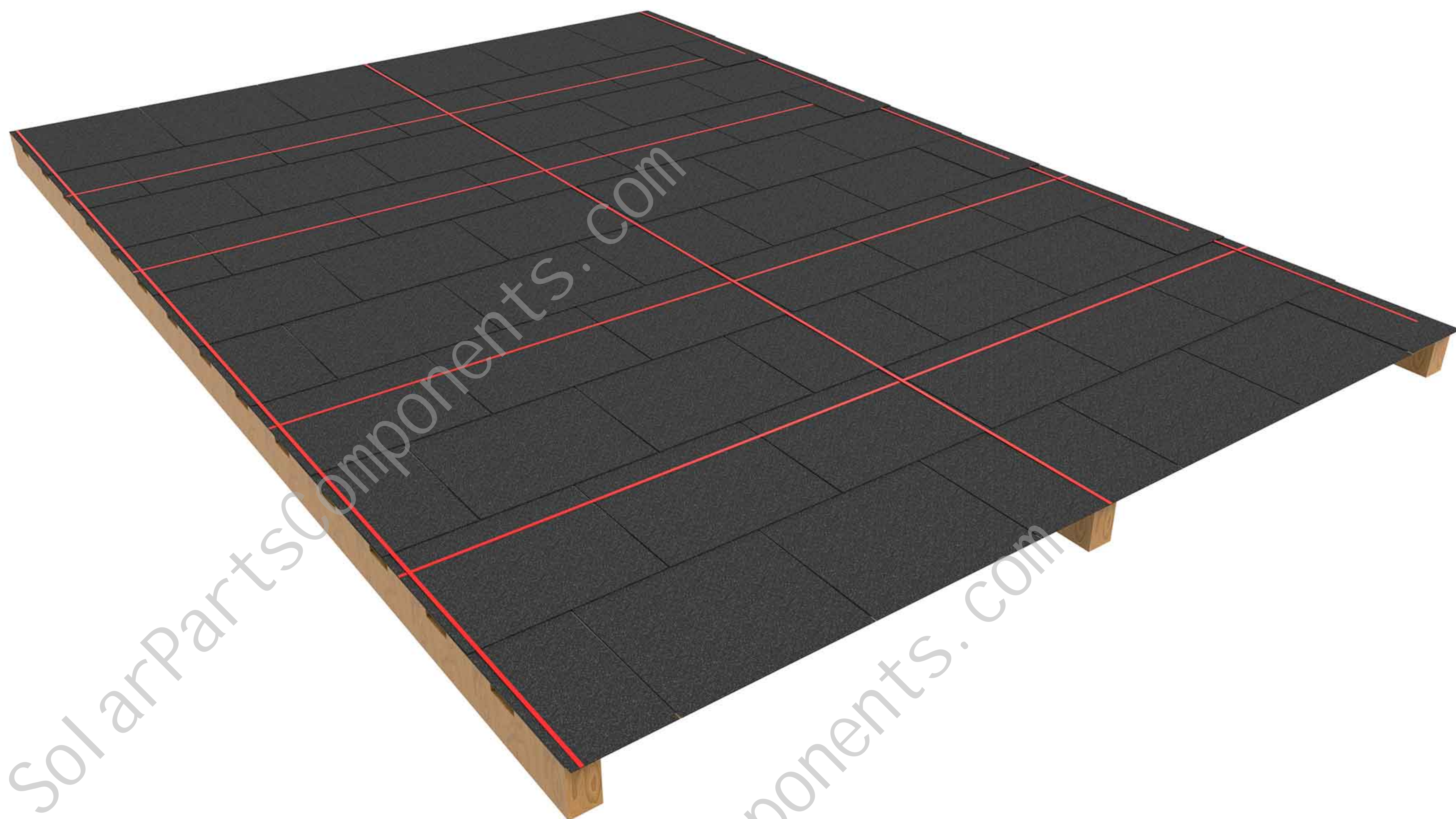
INSTALLATION INSTRUCTIONS

FOR STAINLESS STEEL HOOK#14

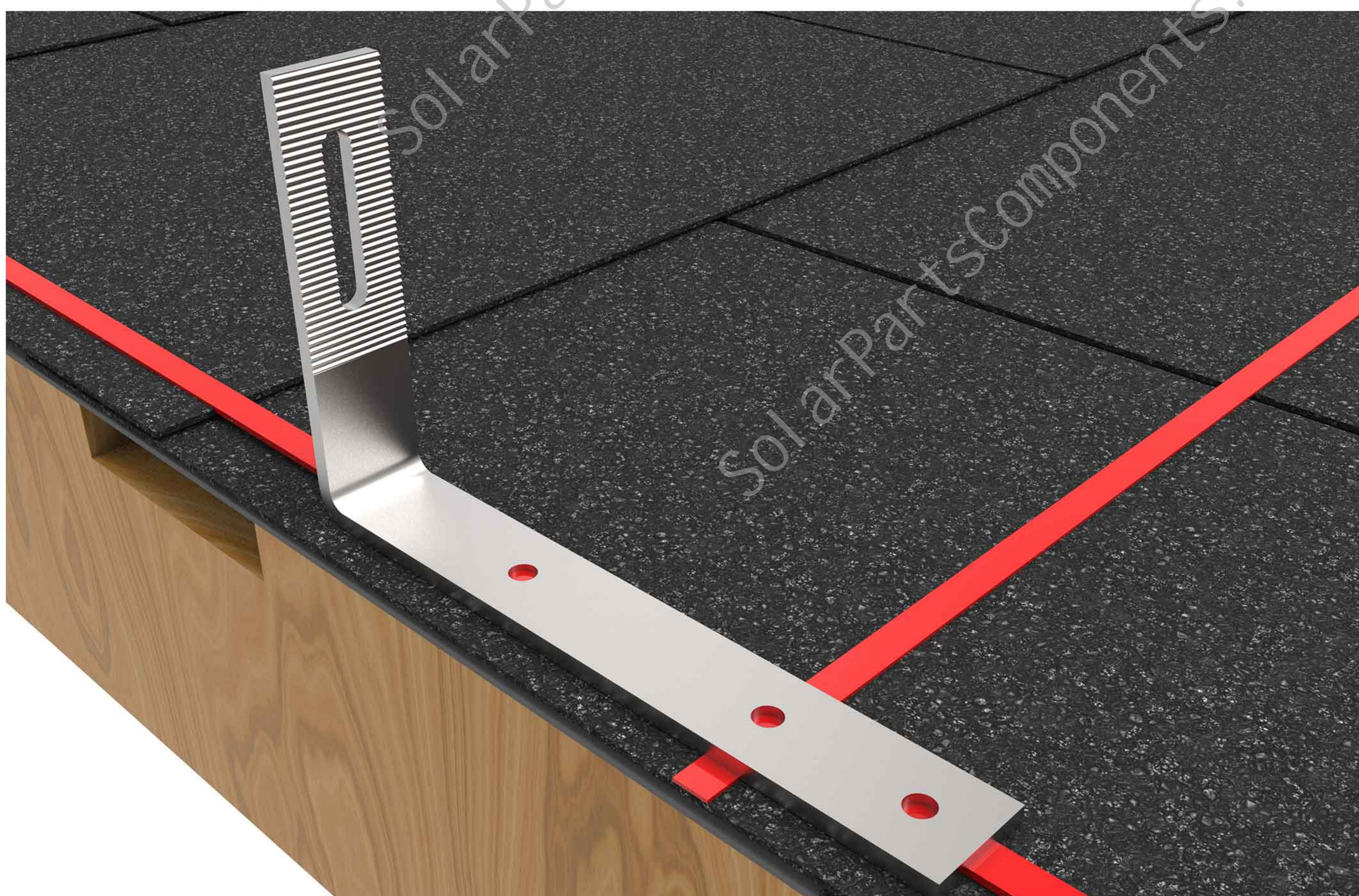


Installation instructions for stainless steel hook#14

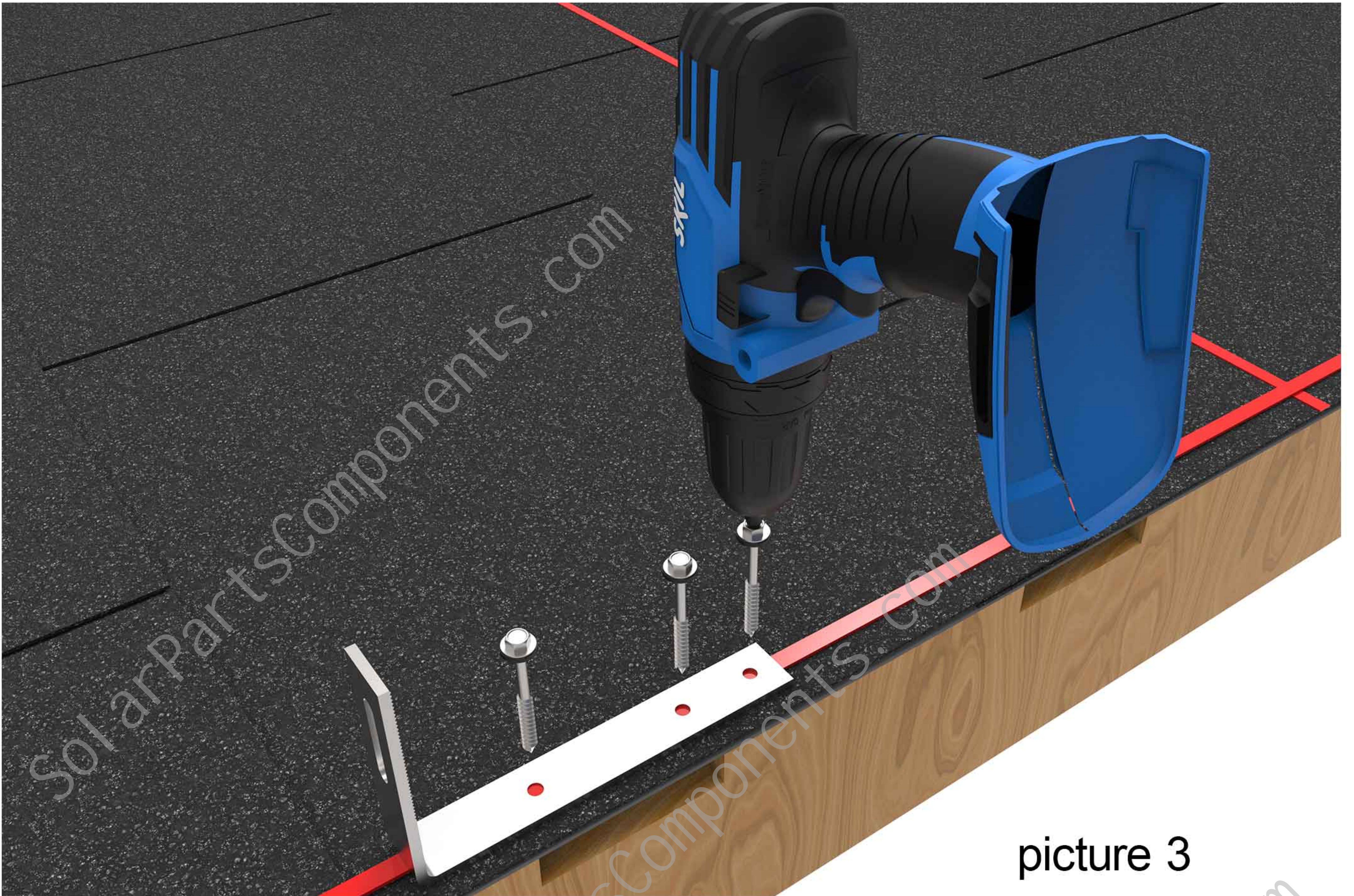
Step one, according to the site construction drawings, draw a line at the installation position of the asphalt shingle main beam hook.



Step two, put the stainless steel hook #14 on the installation position of the marking.

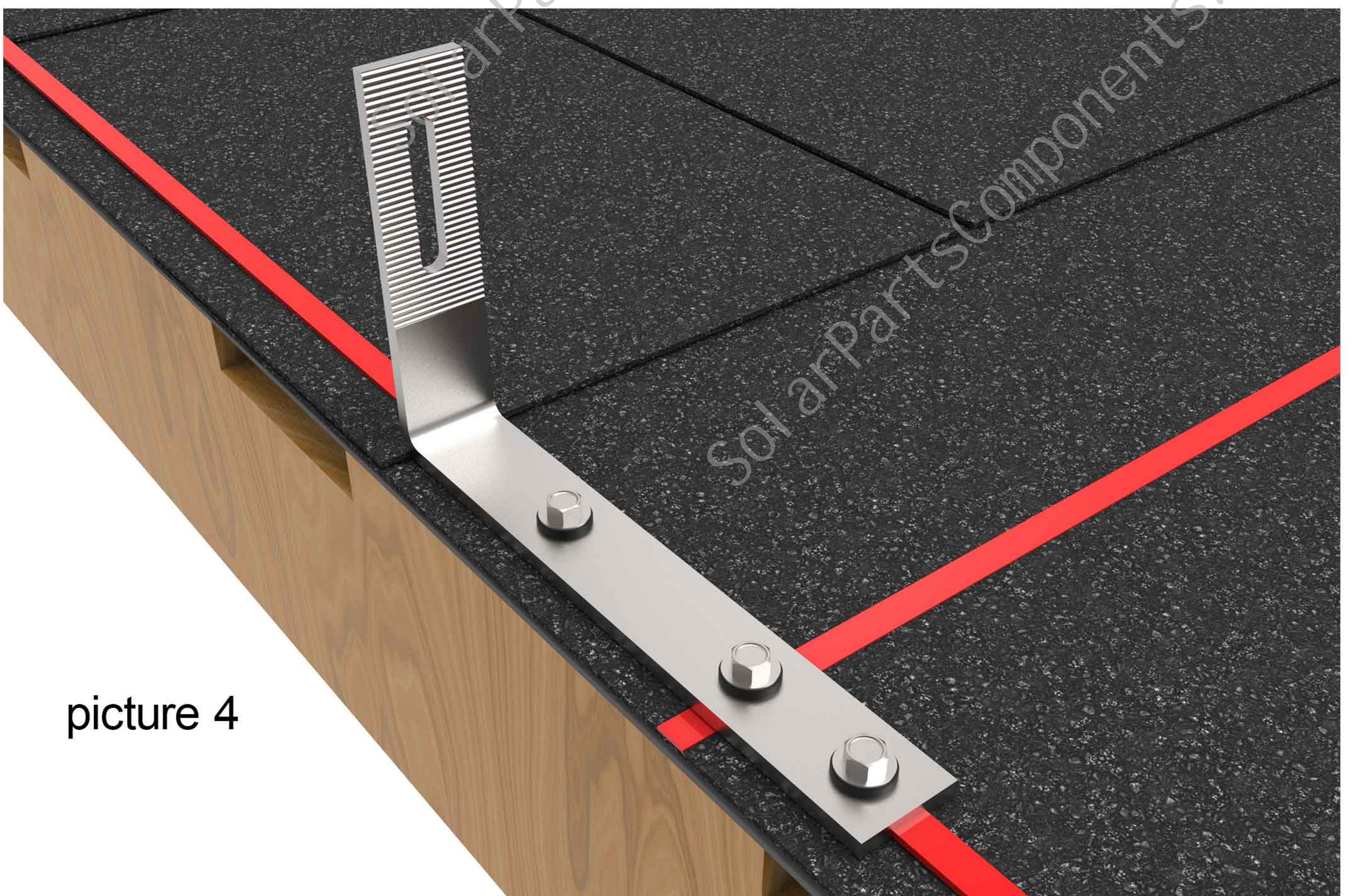


Step three,fix the hook #14 on the main beam with three wood screws, as picture 3 shows.



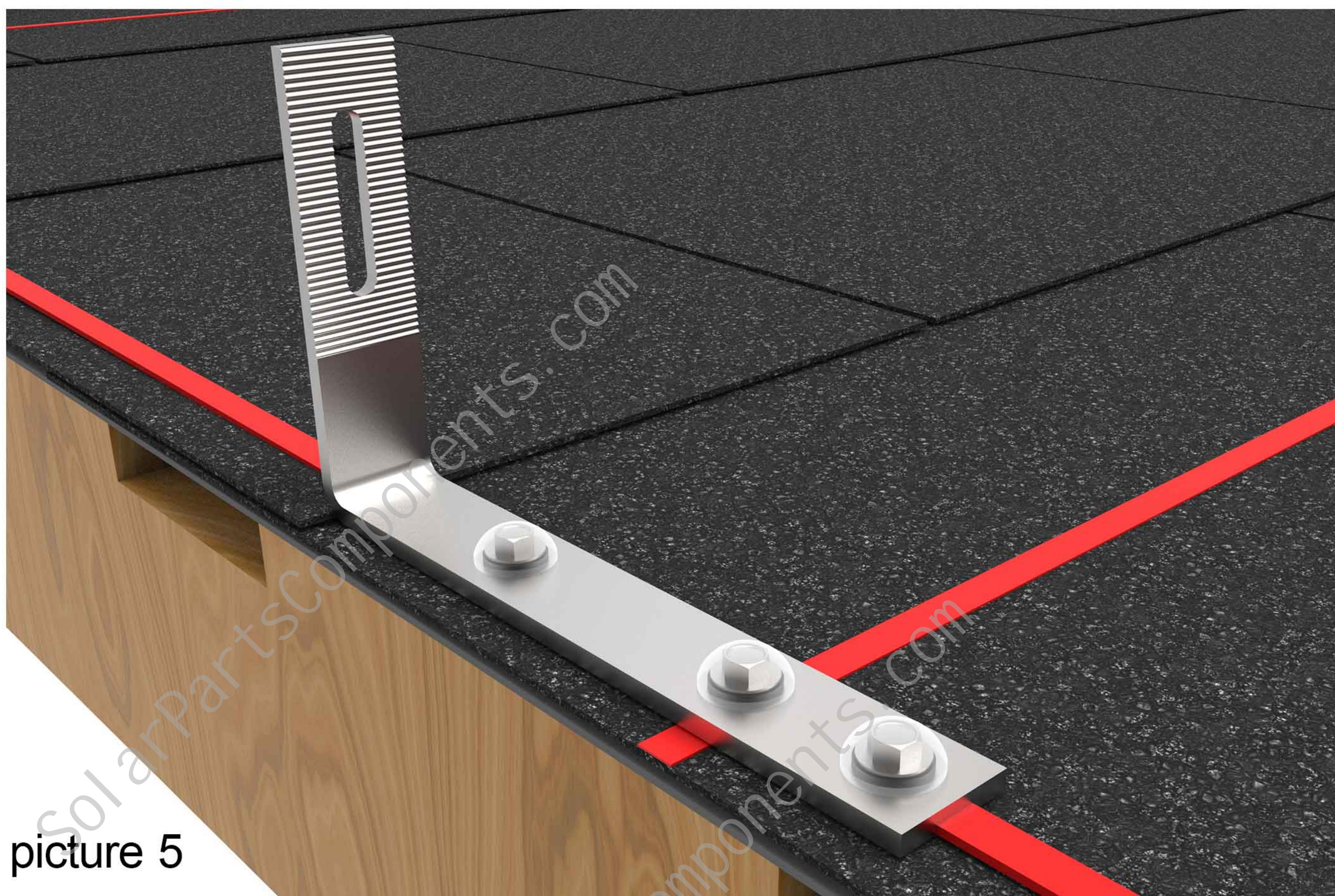
picture 3

After installation as picture 4 shows.



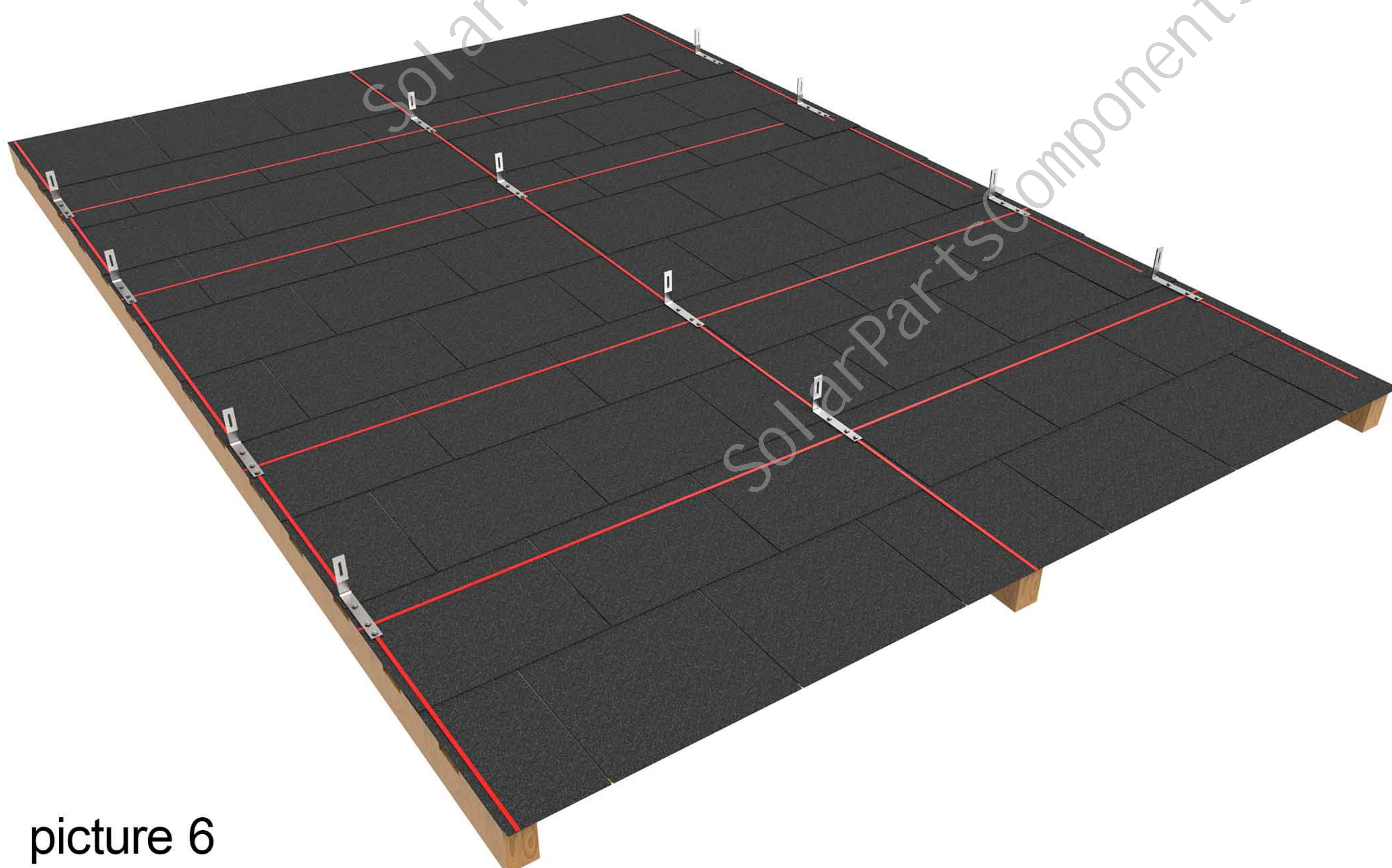
picture 4

Step four, apply sealant on the hook wood screw position, as picture 5 shows.



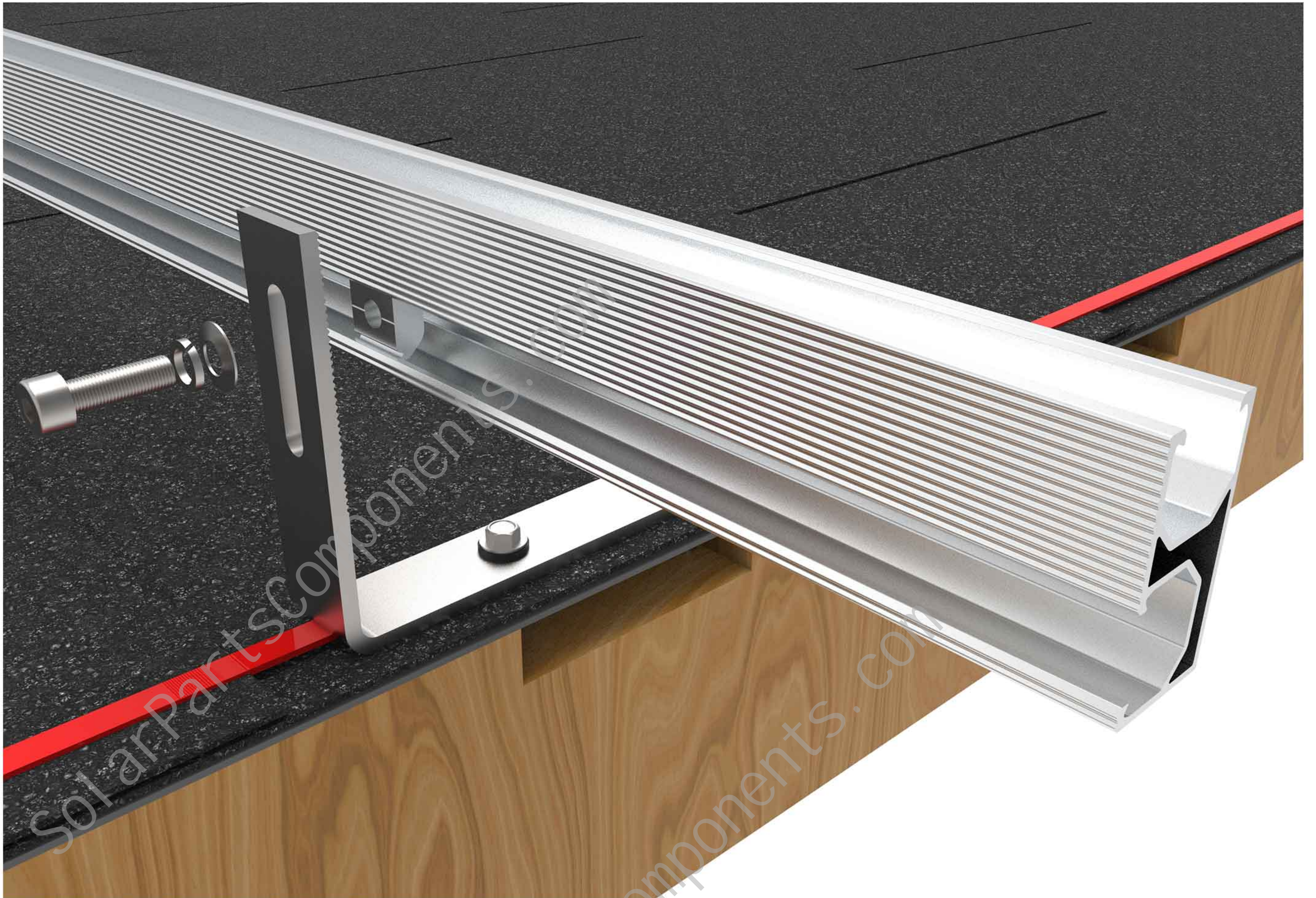
picture 5

After all the hooks are installed as picture 6 shows.



picture 6

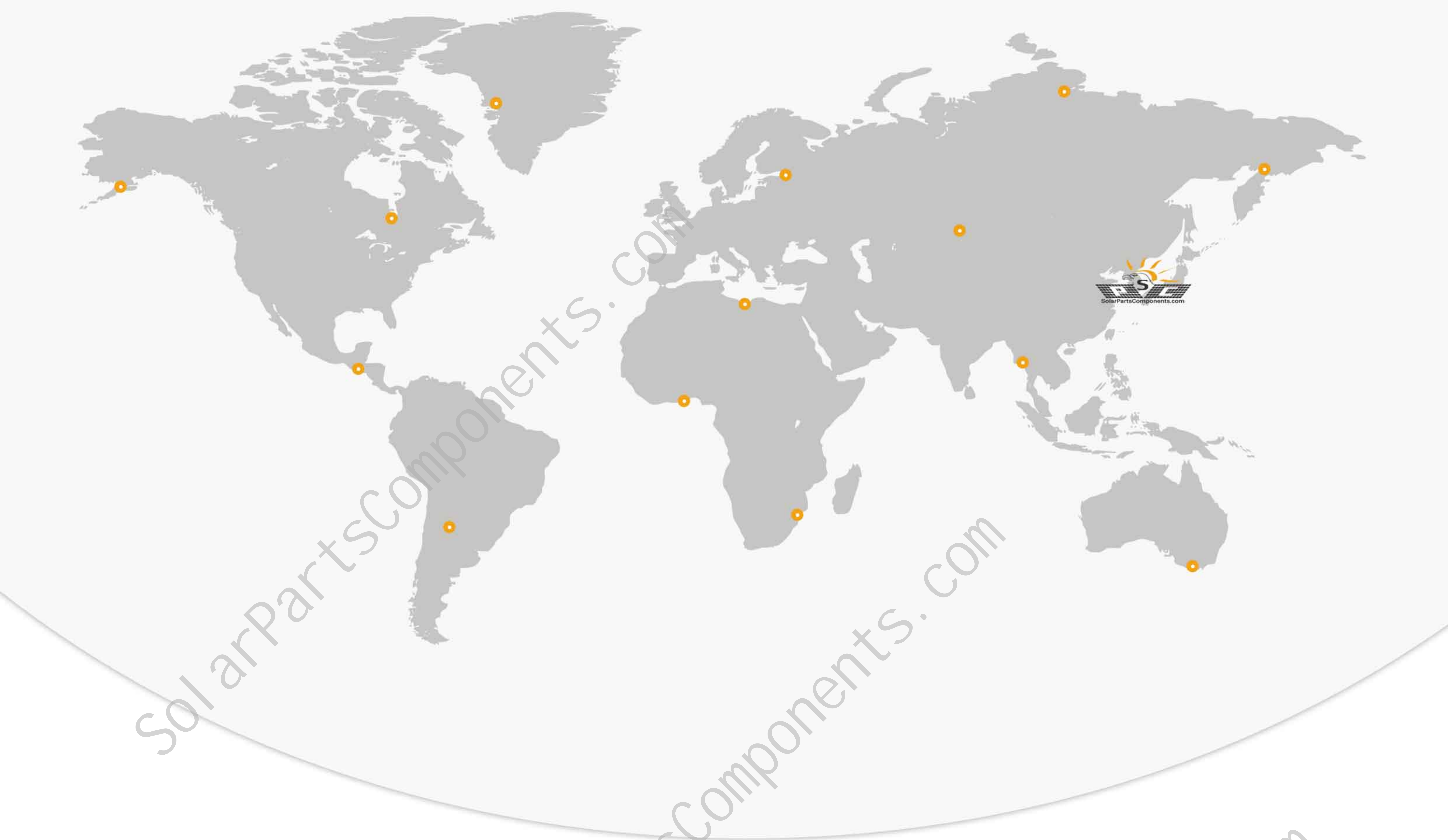
Finally install the rail on the stainless steel hook #14 with M8*25 bolts.



The effect after the rail is installed as picture 8 shows.



Picture 8



Solar Mounting Parts & Components Factory



SolarPartsComponents.com
XIAMEN TOP BEST TECH CO.,LTD
Info@SolarPartsComponents.com

