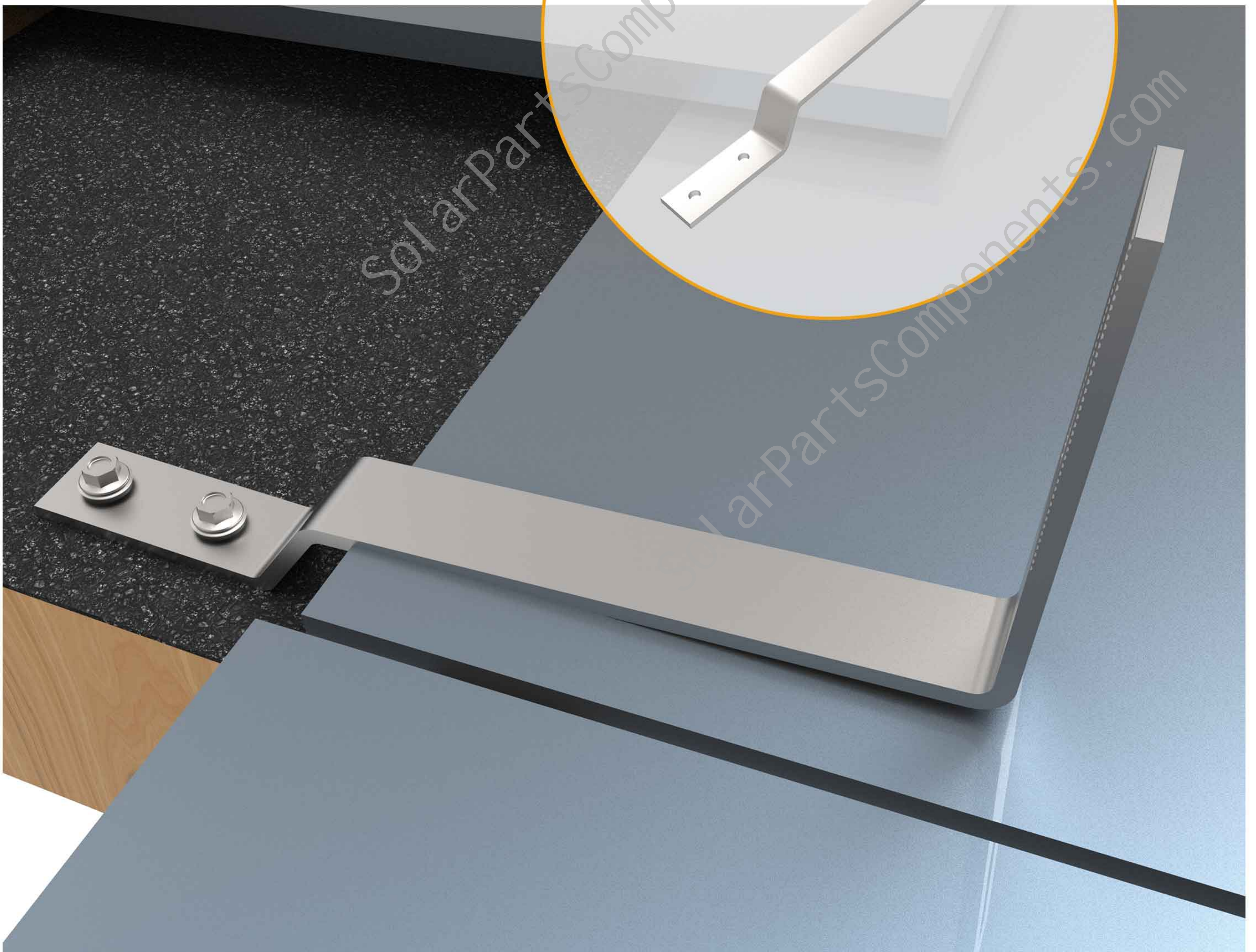




ROOF SOLUTION

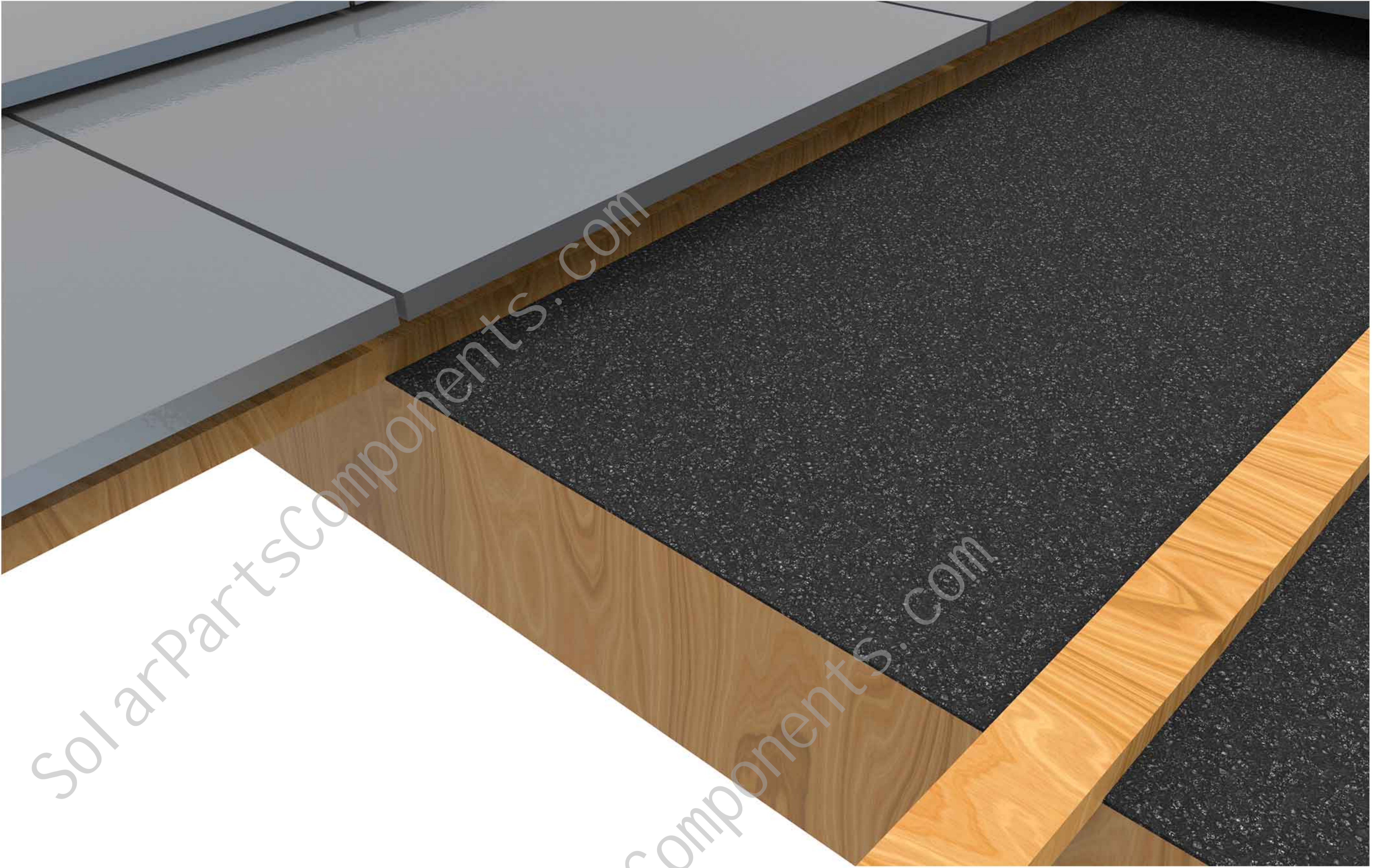
INSTALLATION INSTRUCTIONS

FOR STAINLESS STEEL HOOK#12

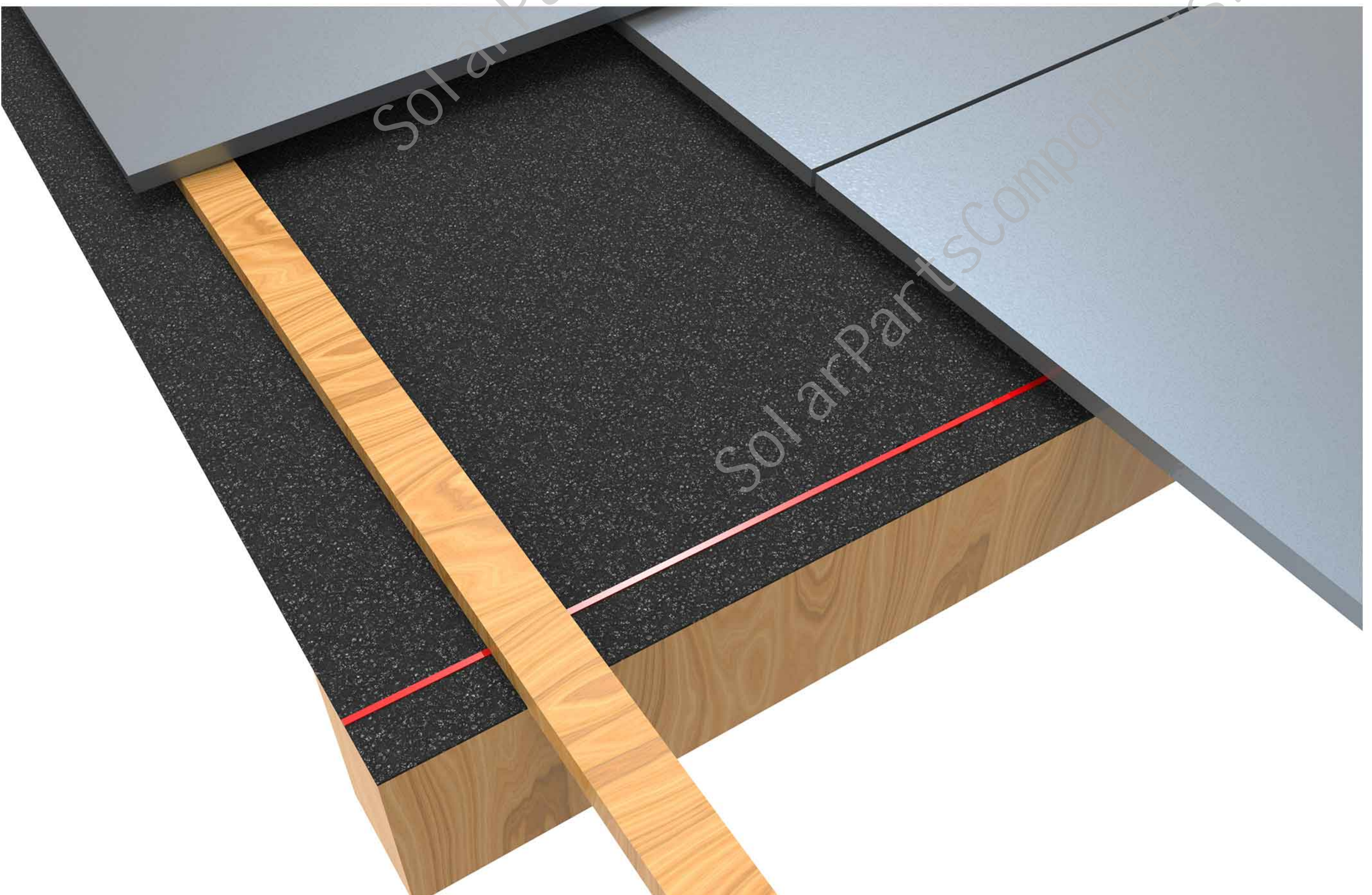


Installation instructions for stainless steel hook#12

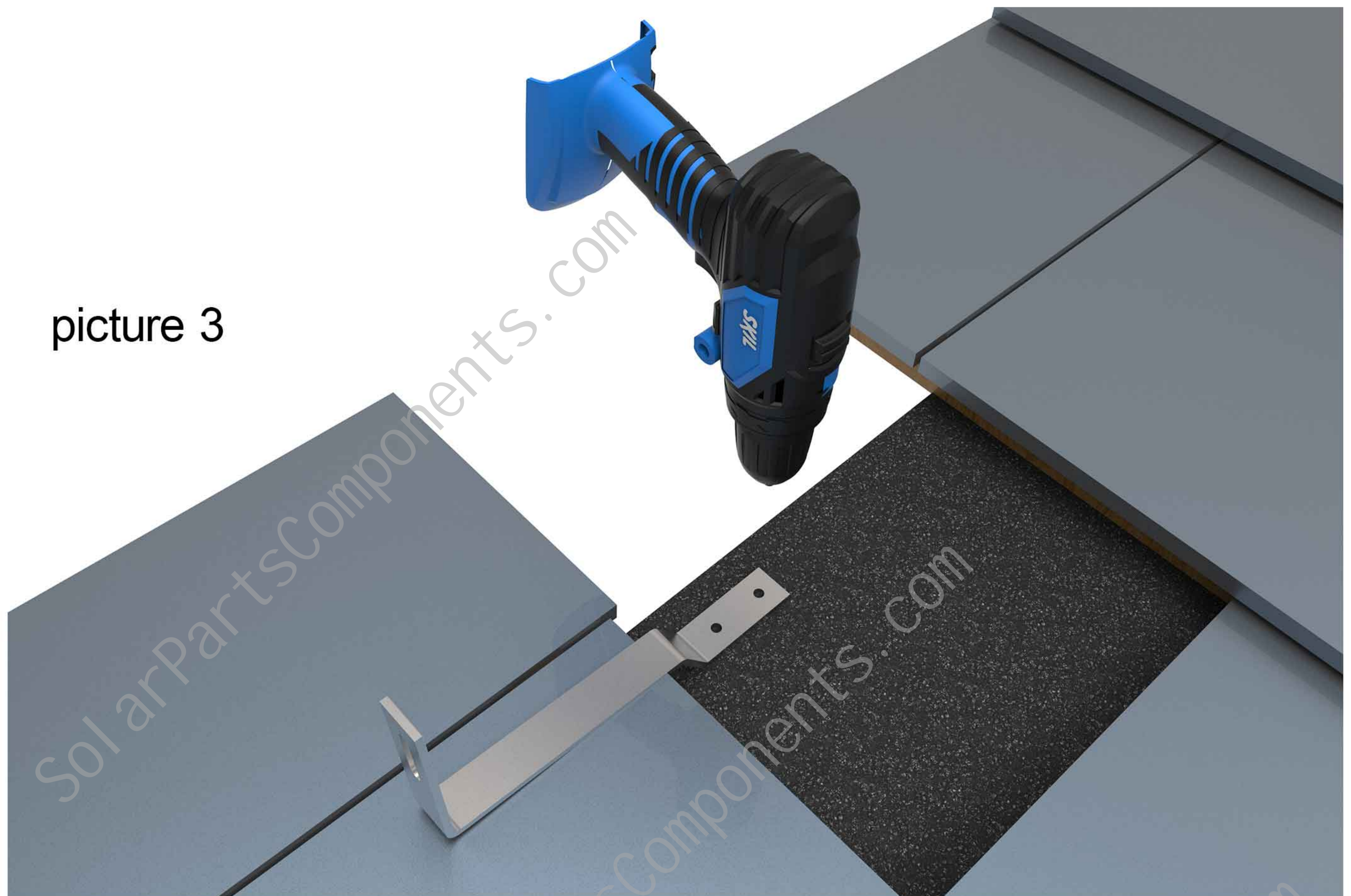
Step one, open the flat tiles



Step two, find the position of the main beam of the roof and mark it with a line above the main beam.

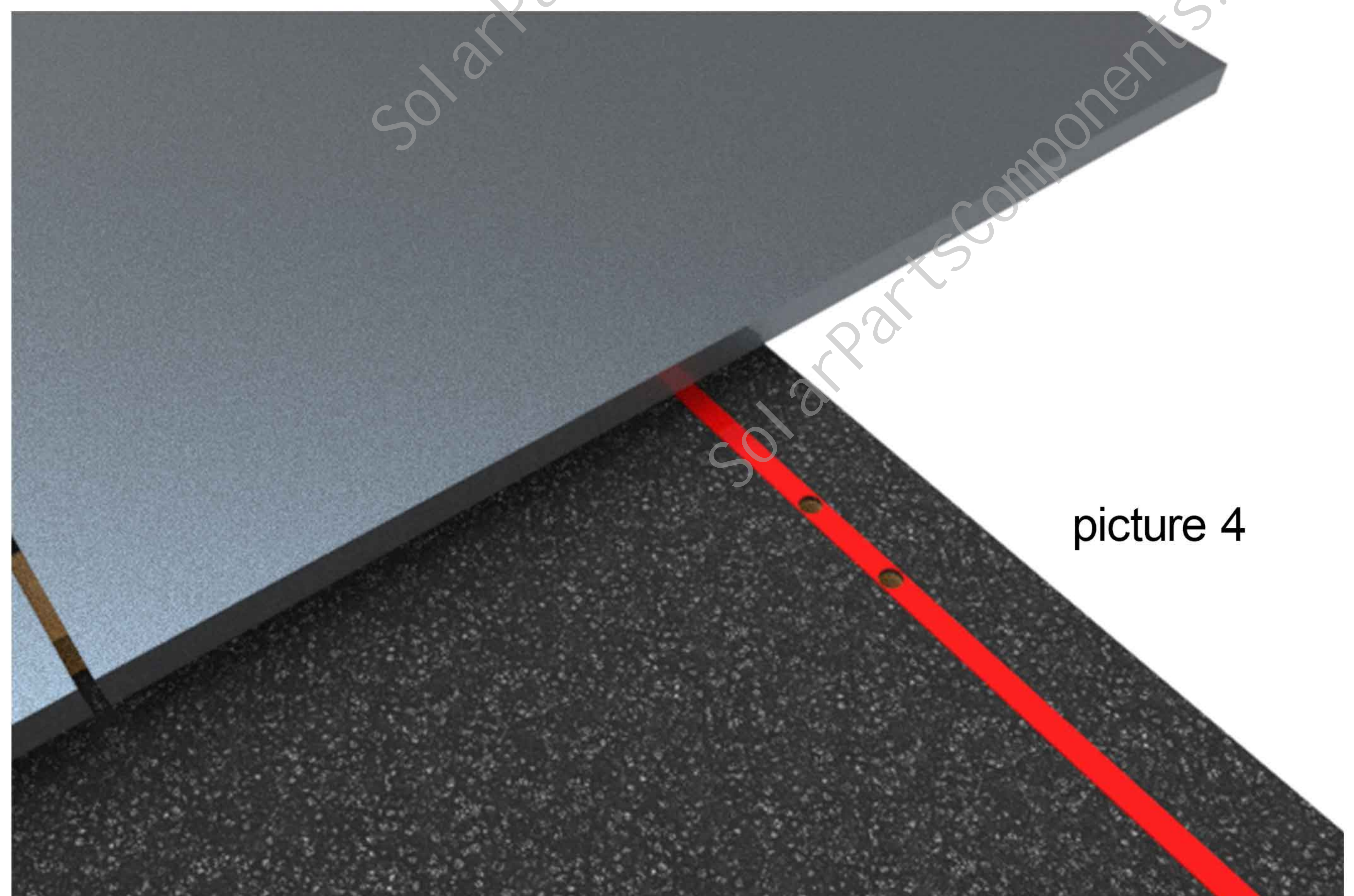


Step three, Put the stainless steel hook #12 on the installation position of the marking, and drill holes on the main beam with an electric drill according to the hole position on the hook, as picture 3 shows.



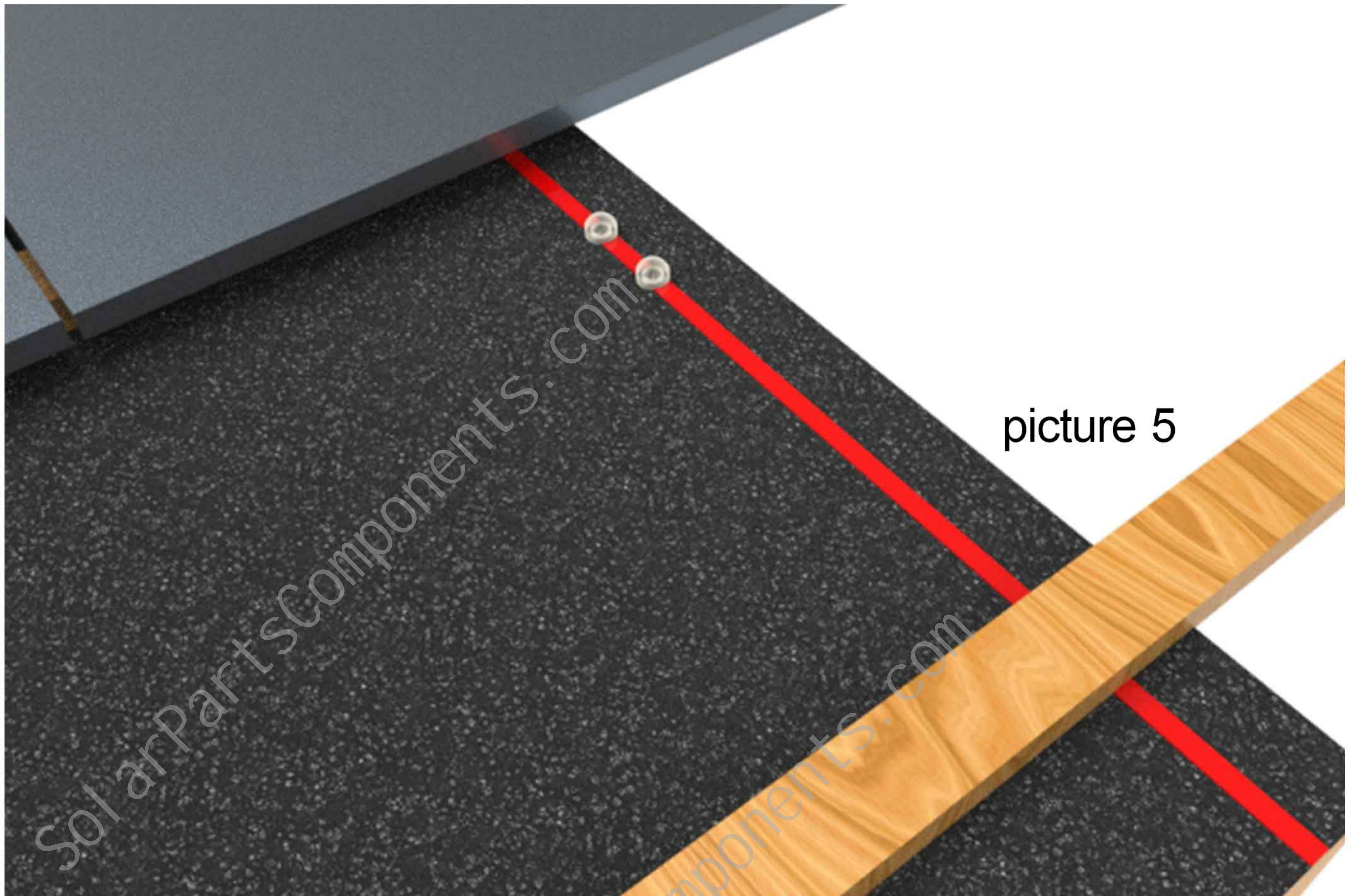
picture 3

The effect after drilling as picture 4 shows.

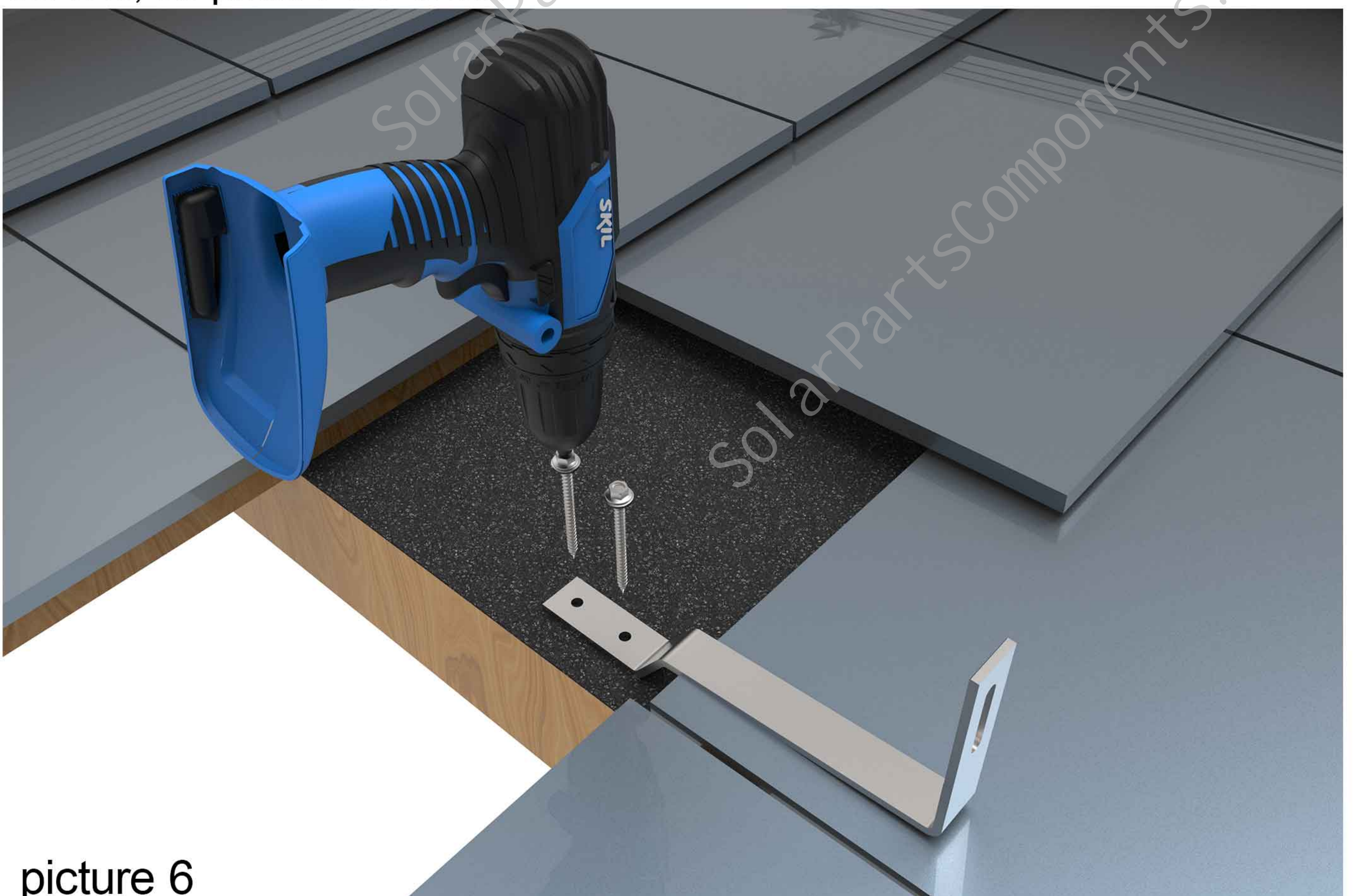


picture 4

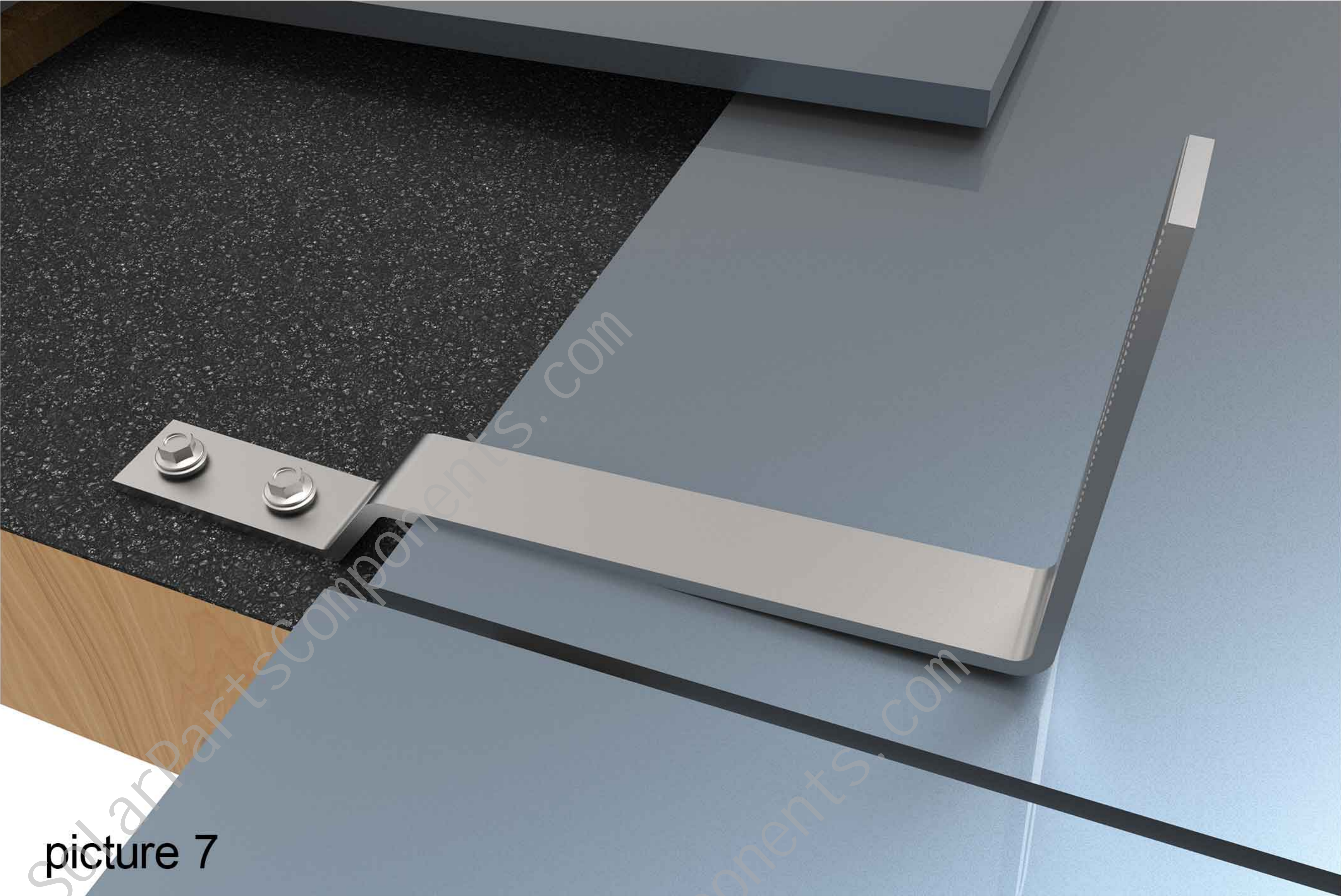
Step four, apply sealant to the drilling position of the main beam, as picture 5 shows.



Step five, put the stainless-steel hook #12 on the main beam, align the holes with the drilled holes, and fix the hook on the main beam with wood screws, as picture 6 shows.

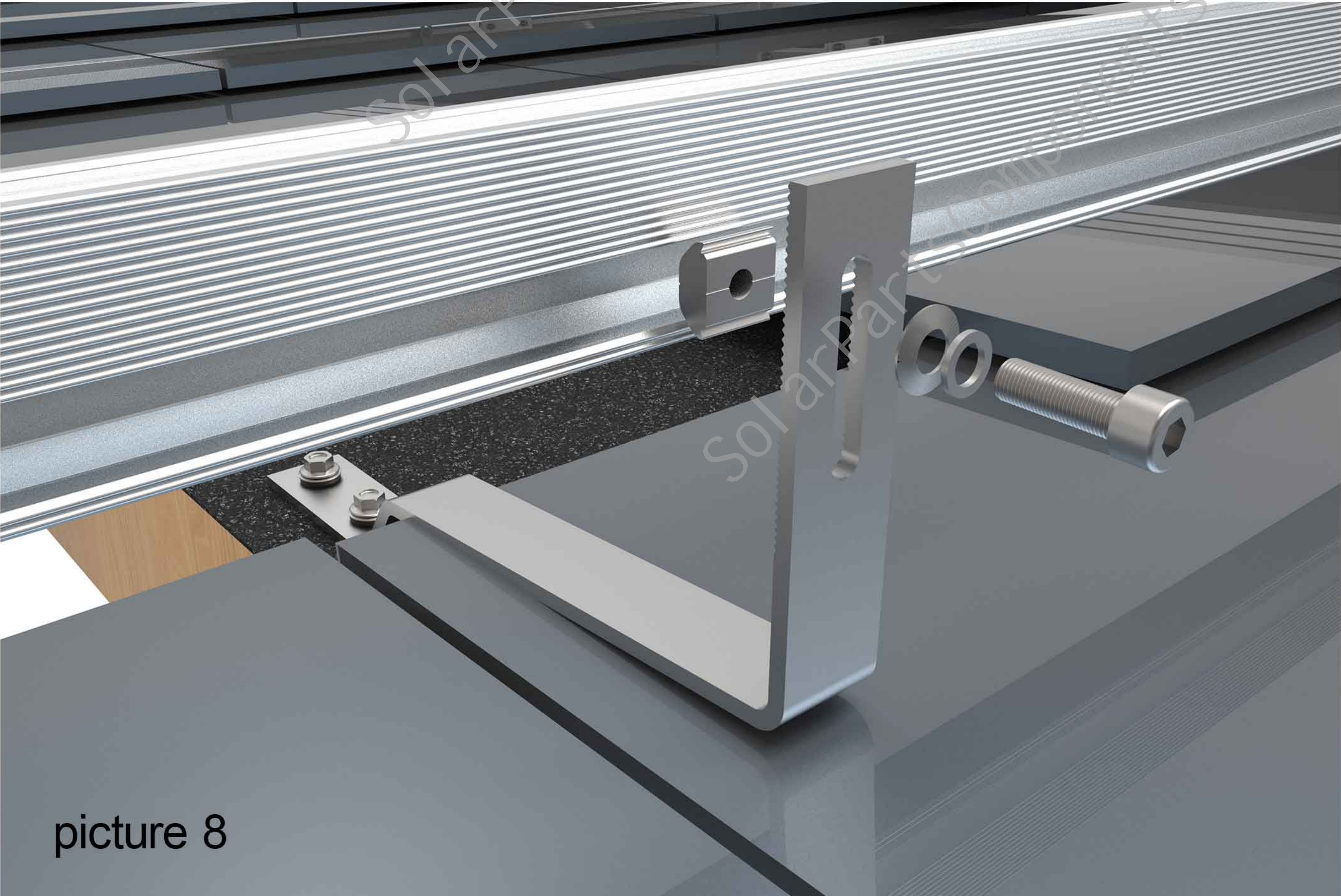


After fixing as picture 7 shows.



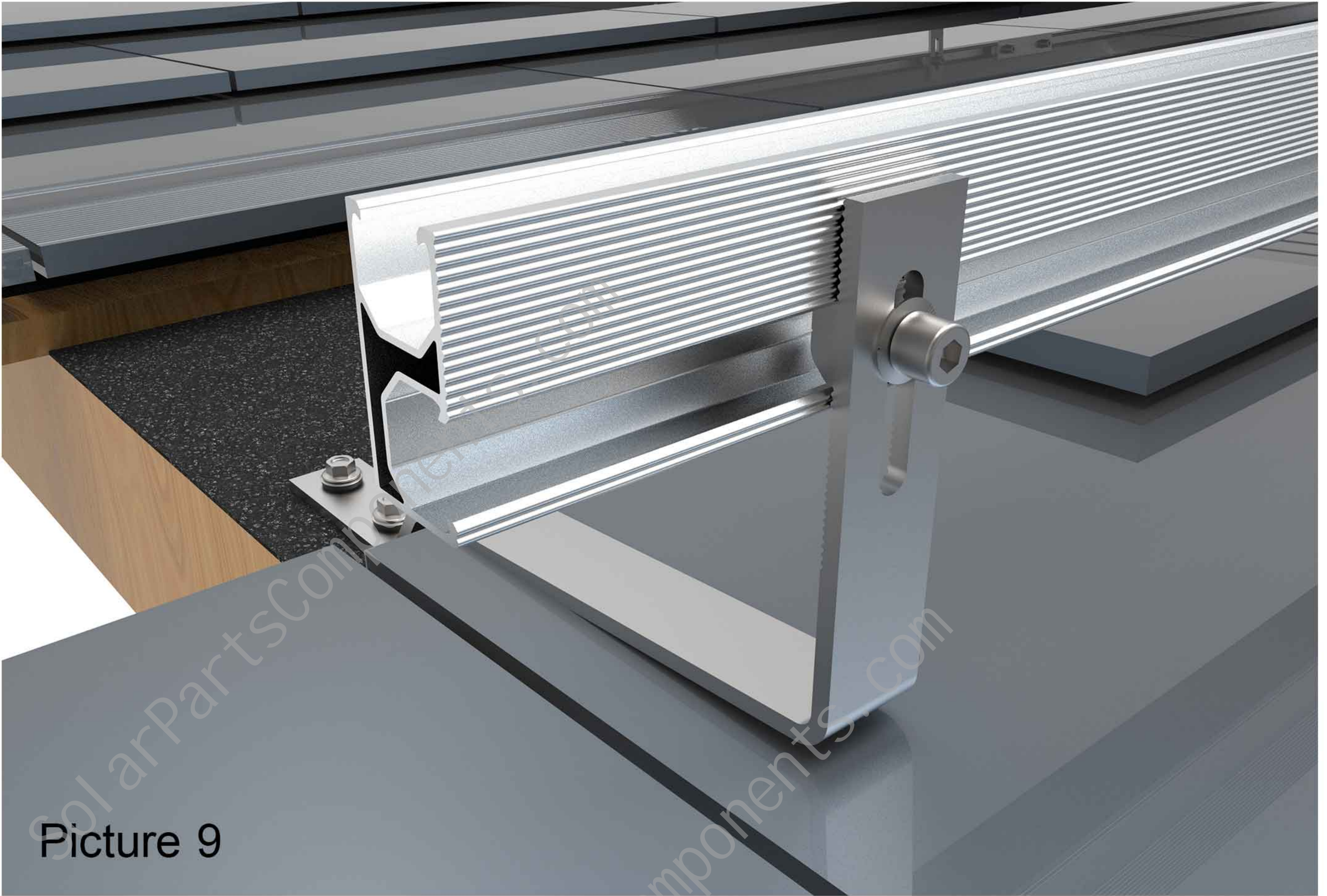
picture 7

Step six , Install the rail on the stainless steel hook #12 with M8*25 bolts. as picture 8 shows.



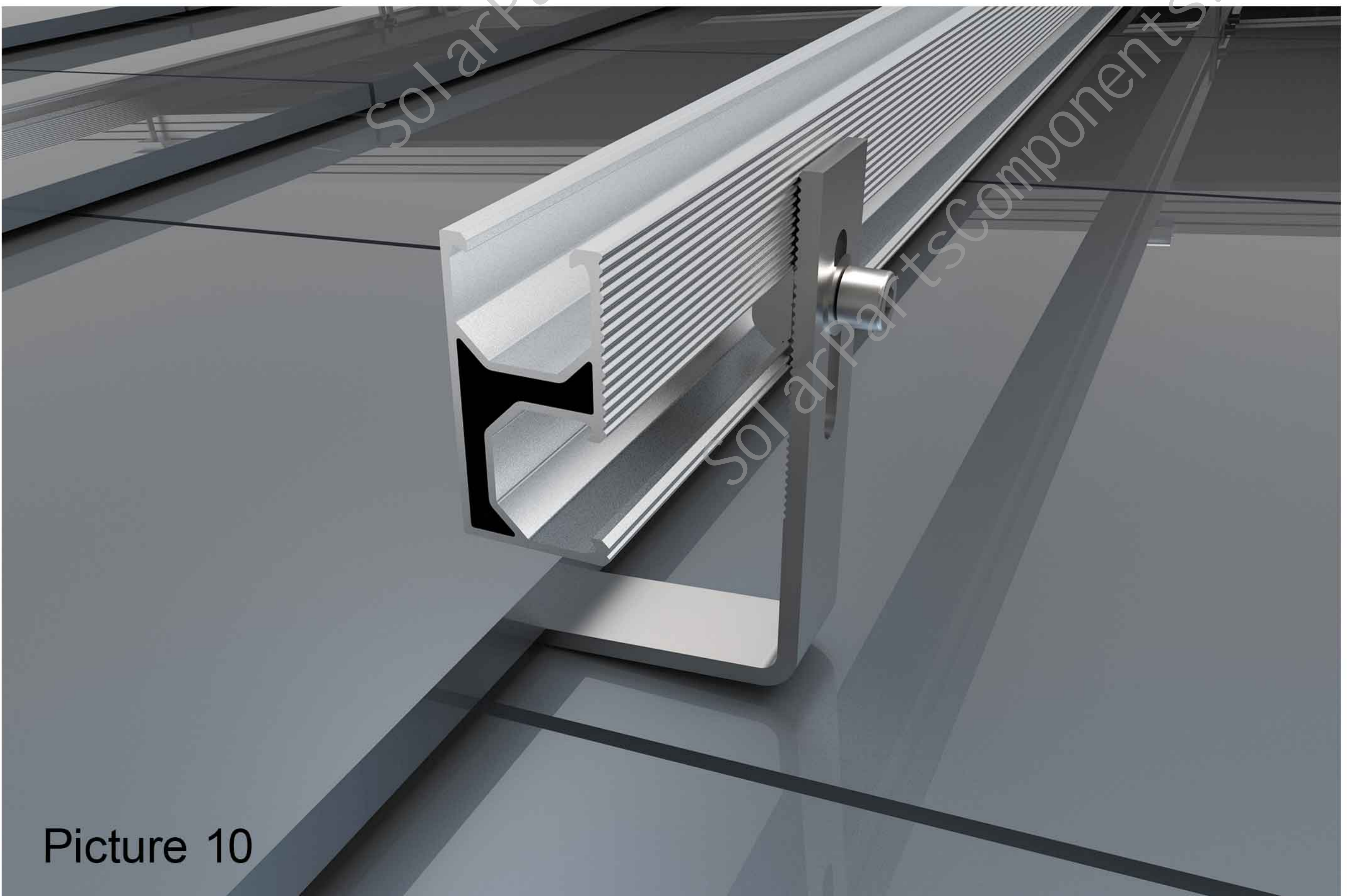
picture 8

Step seven, The effect after the rail is installed as picture 9 shows.

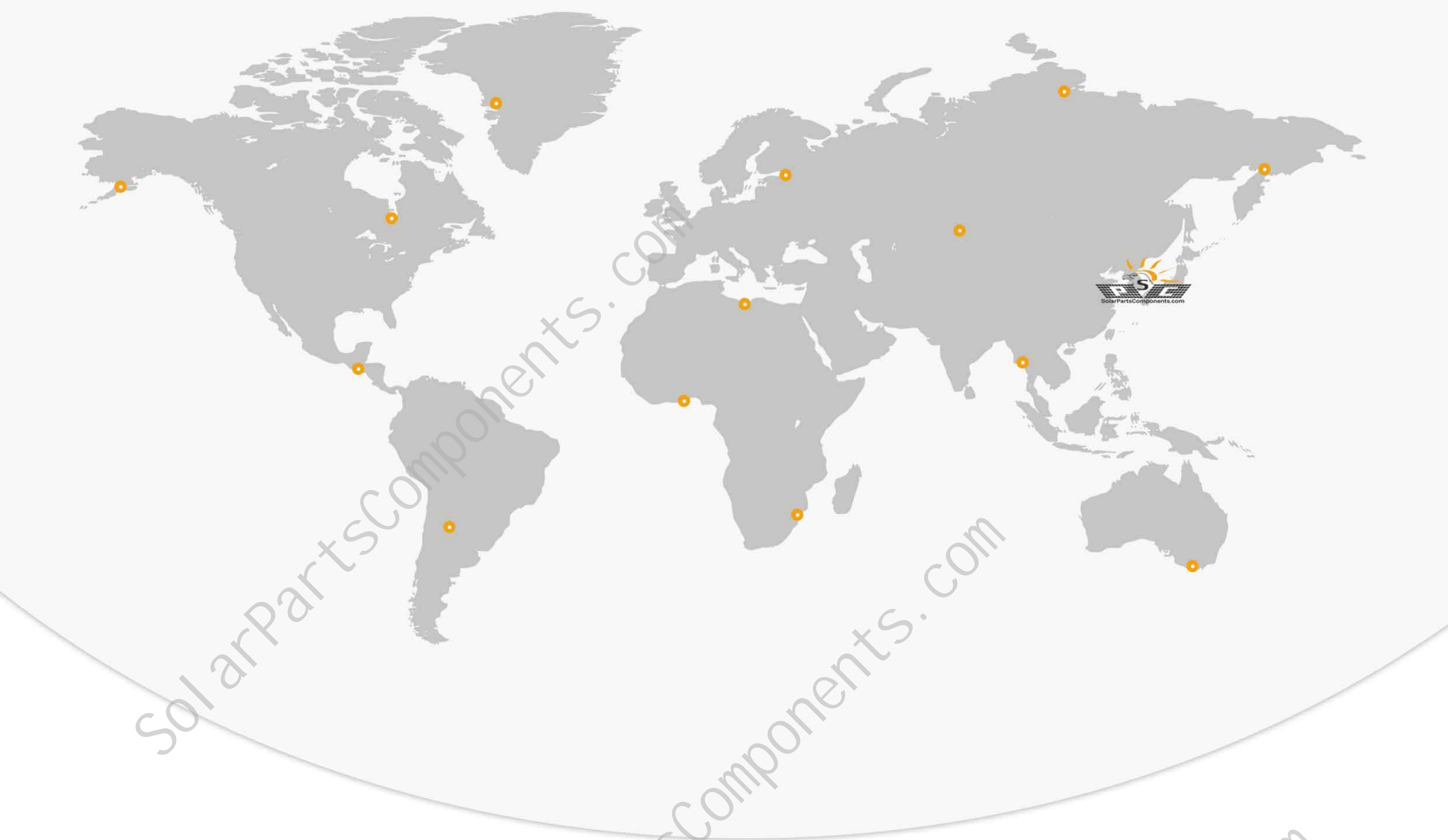


Picture 9

Step eight, The expected effect after installing the stainless steel hook #12 and covering tiles as picture 10 shows.



Picture 10



Solar Mounting Parts & Components Factory



SolarPartsComponents.com
XIAMEN TOP BEST TECH CO.,LTD
Info@SolarPartsComponents.com

