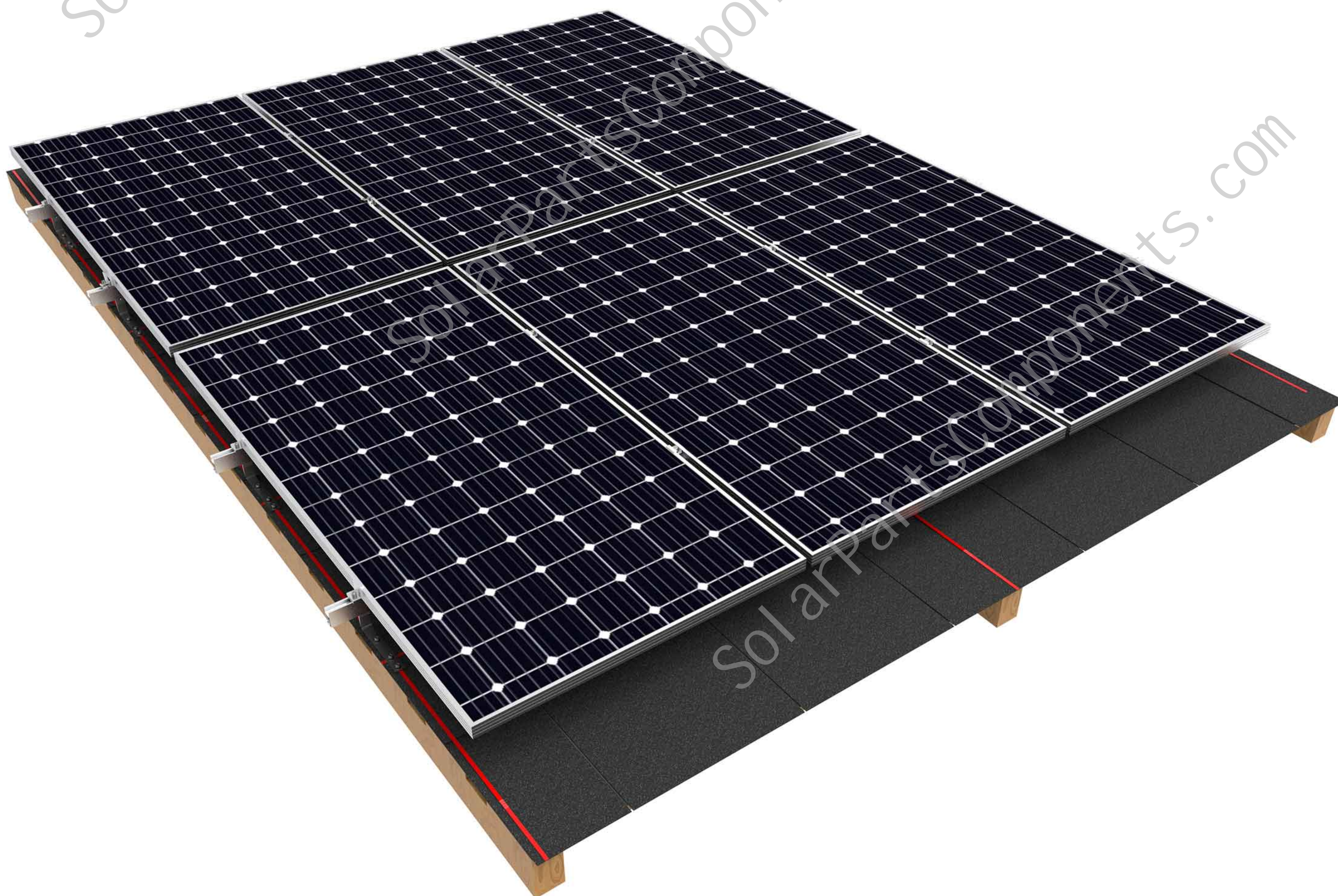




ROOF SOLUTION

Installation instructions for Solar Roof Mounting System SPC-RF-IK14-DR



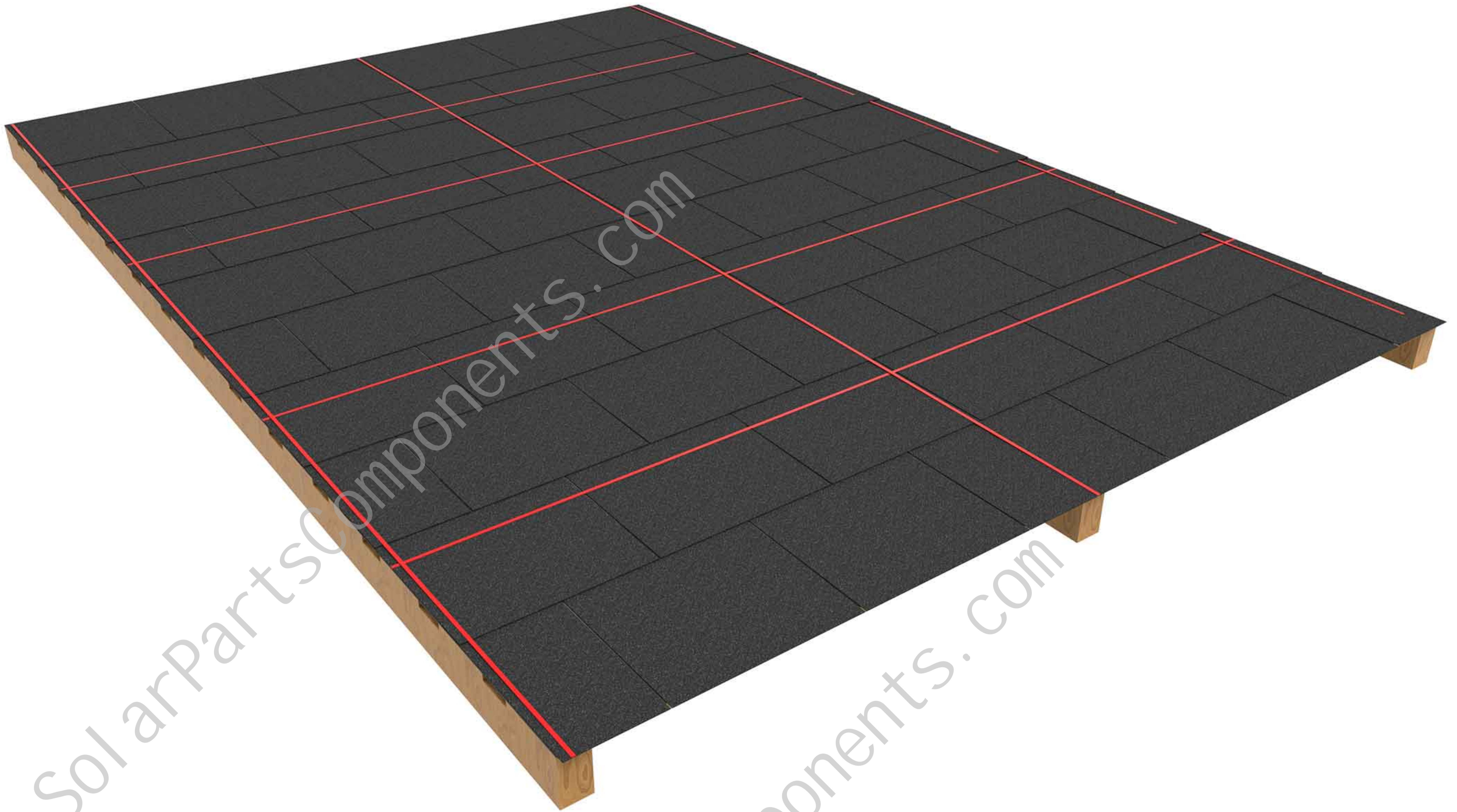
The roof hook #14 is made of stainless steel, corrosion-resistant and beautiful in appearance. The rail is made of aluminum alloy, and the surface is anodized which is not easy to corrode and is light in weight. The overall mounting components are few, and the installation is simple and convenient.

The Small Components are pre-assembled in the factory, which saves assembly time and labor costs on site.

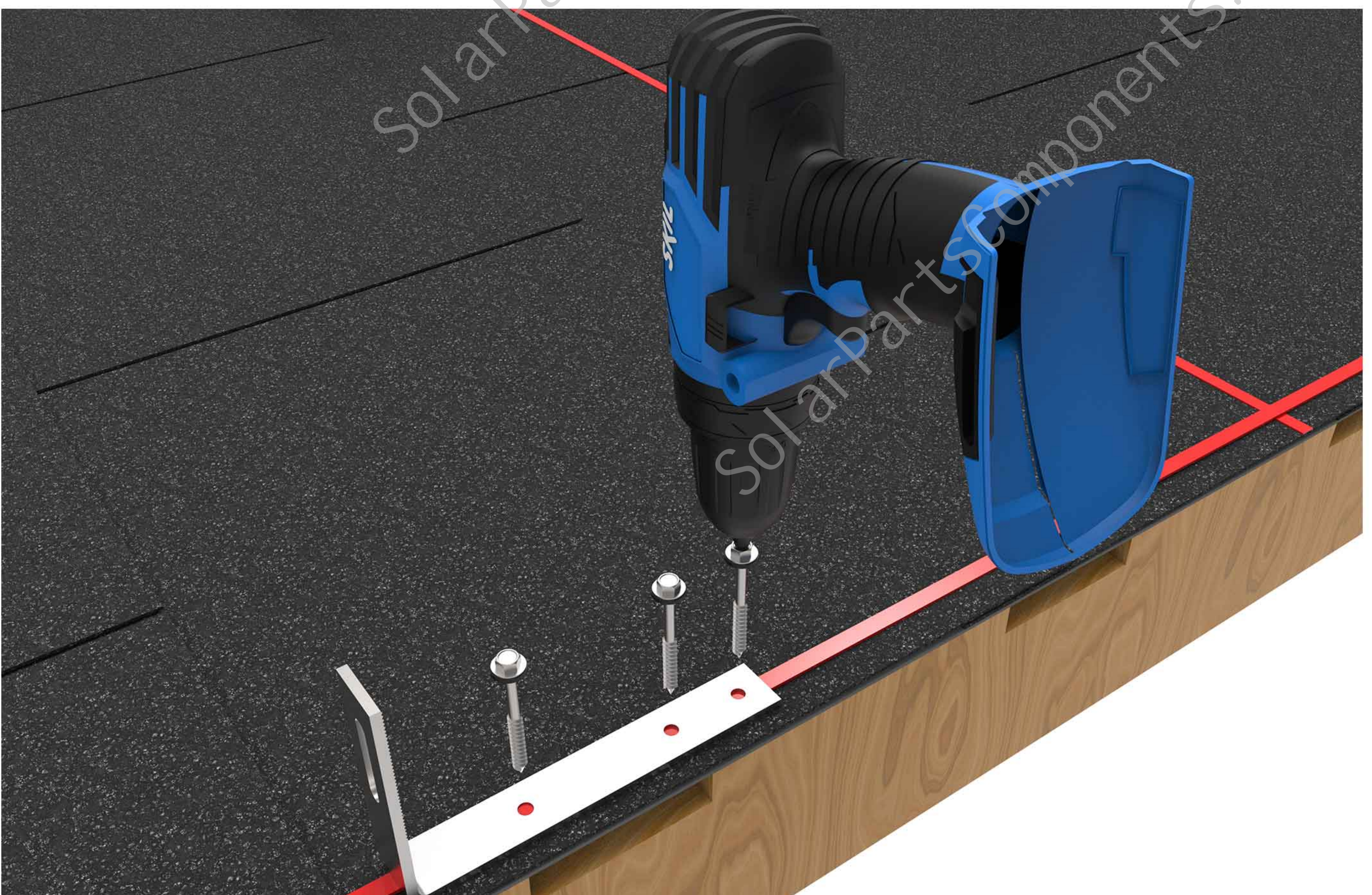
Before installing the system, please read the following installation instructions carefully.

Stainless steel hook installation steps

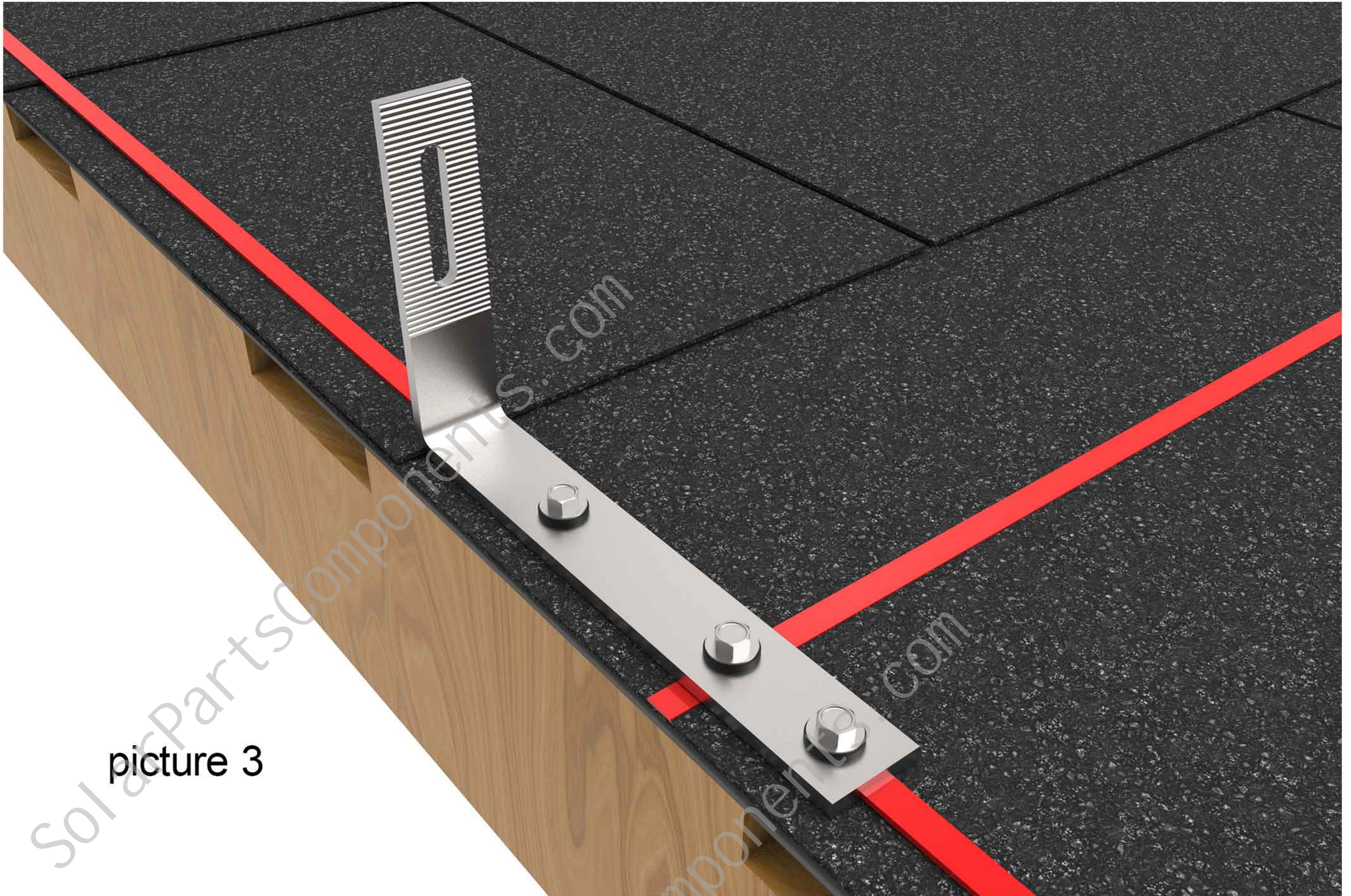
Step one, clean the asphalt shingle roof, and according to the size on the construction drawing, open the tiles where the hooks need to be installed.



Step two, put the stainless steel hook # 14 on the installation position of the main beam, and fix the hook with two wood screws (ST6.3 * 80).

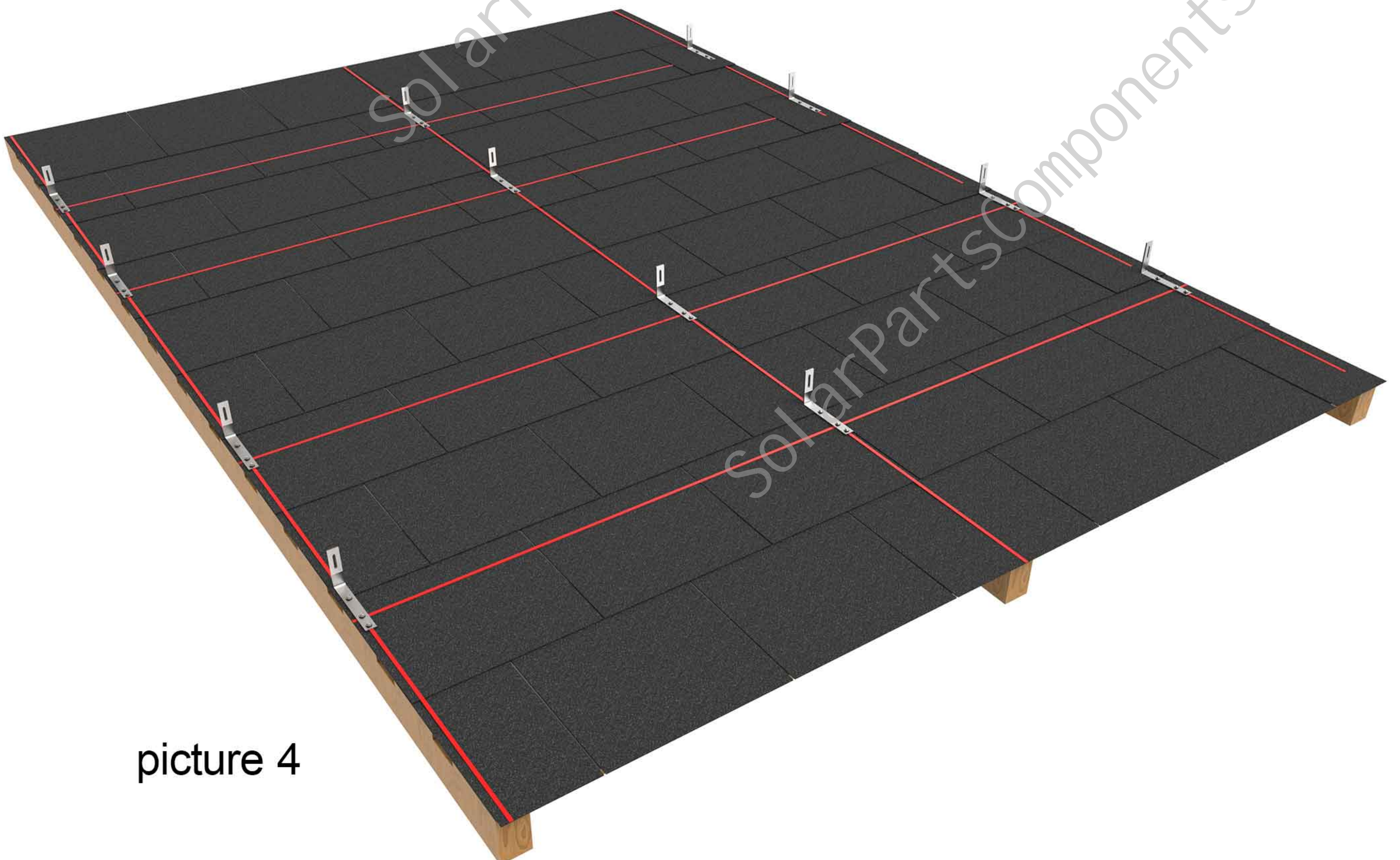


Effect after installation as picture 3 shows.



picture 3

According to step 2, fix all the remaining stainless-steel hooks on the main beam according to the drawings. After installation, as picture 4 shows.



picture 4

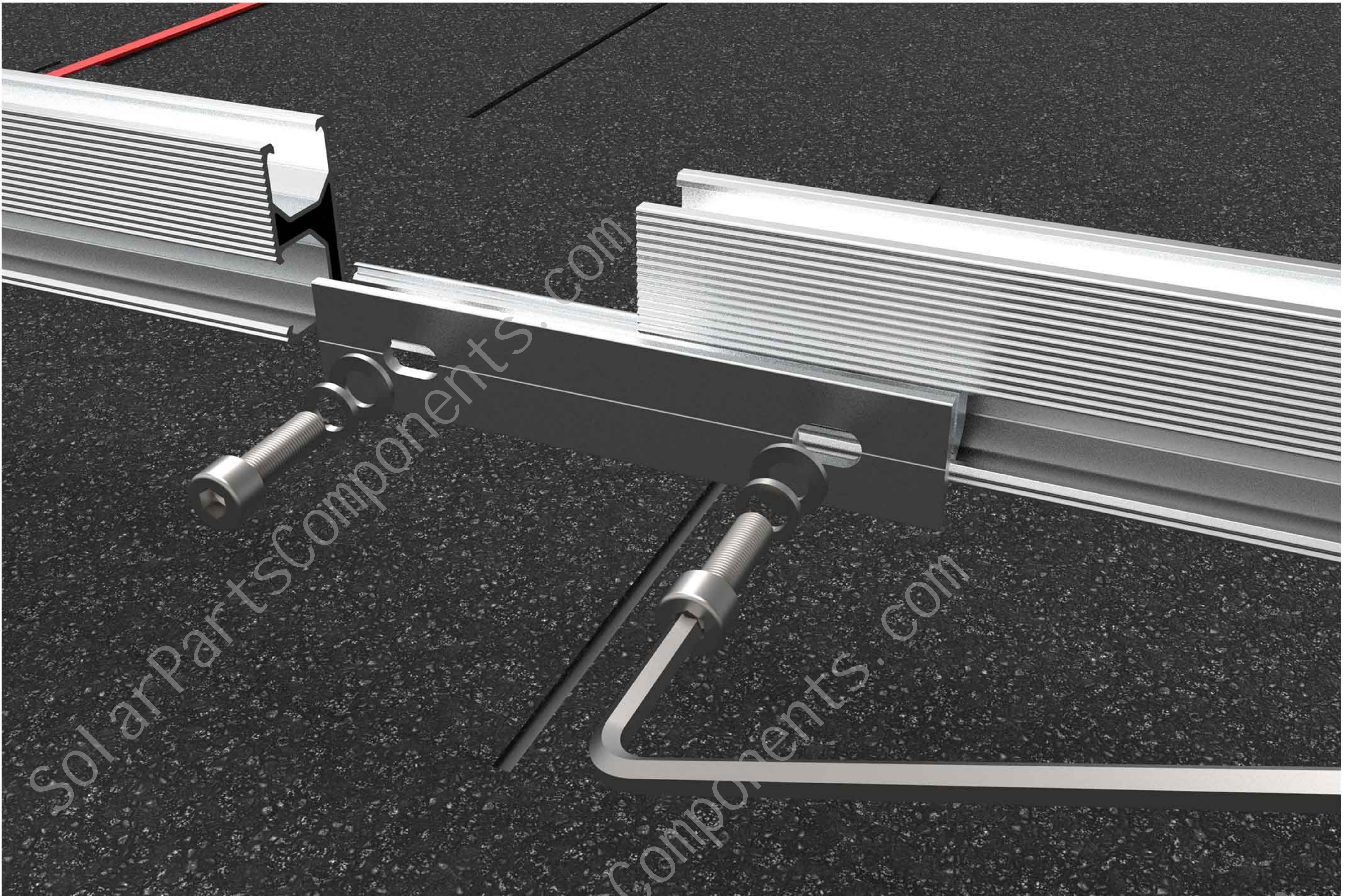
Step three, use M8*25 clamp and bolt assembly to install the rail on the stainless-steel hook # 14.



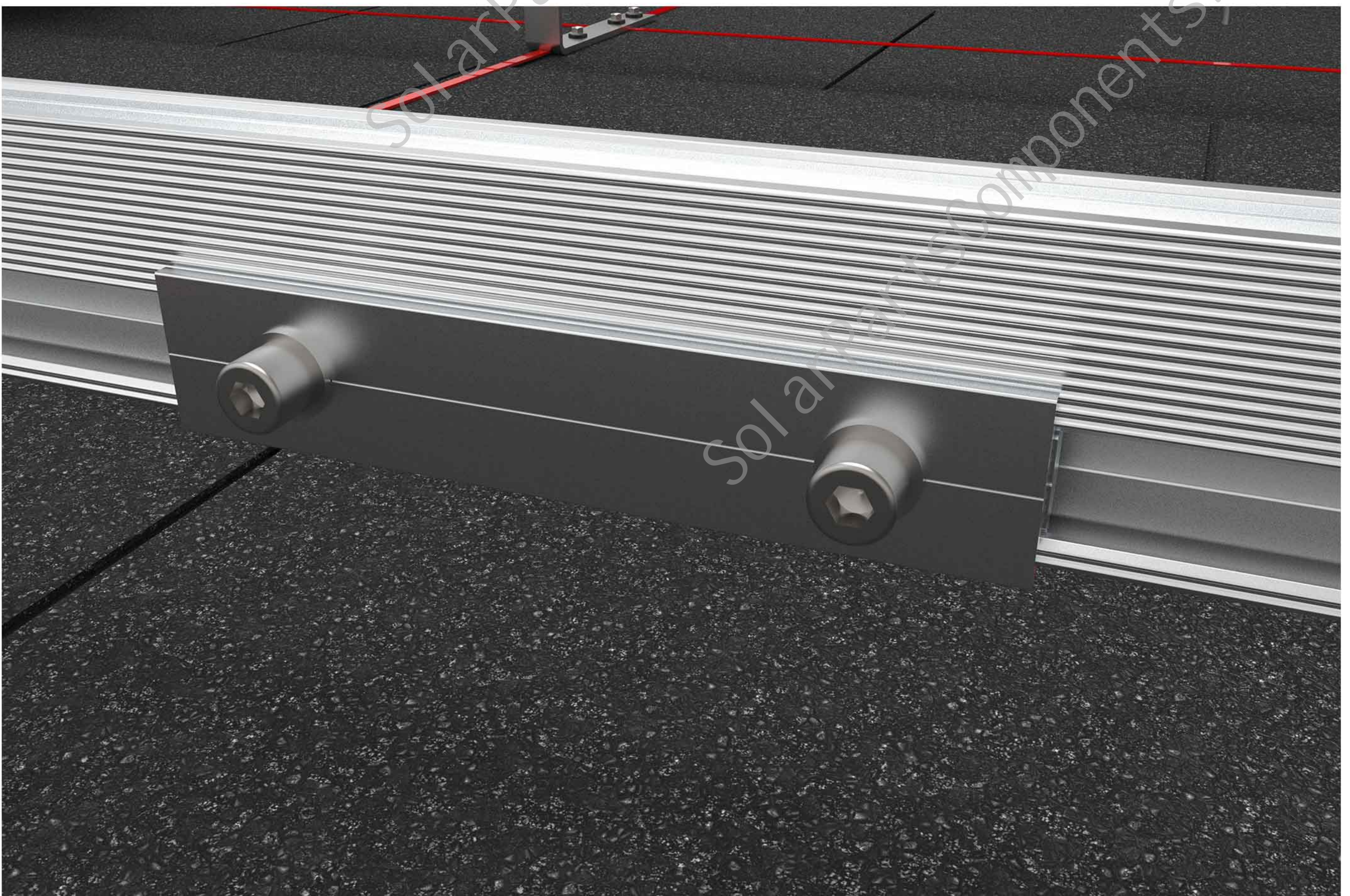
Effect after installation as picture 6 shows.



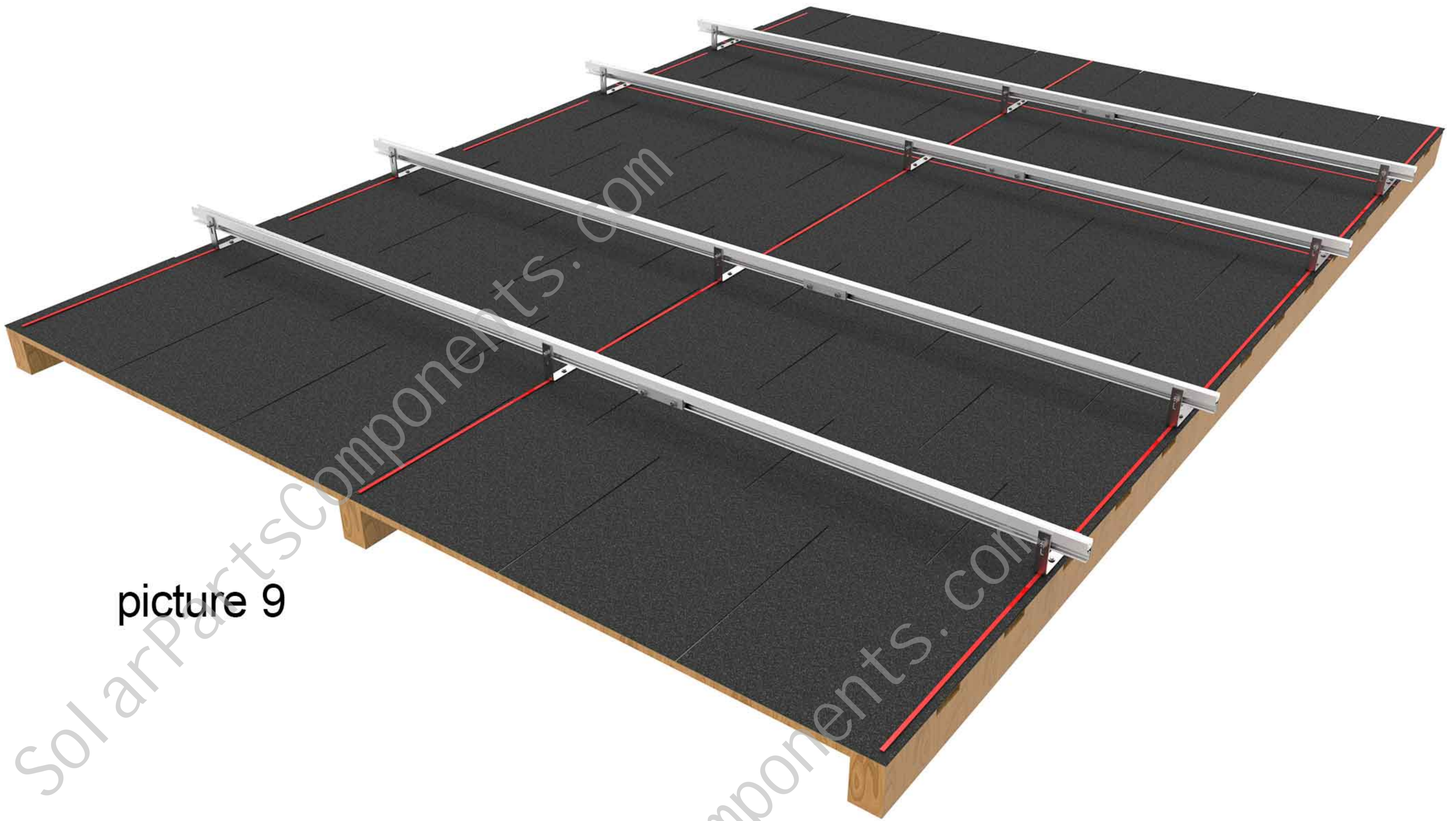
Step four, use the rail splice for the connection between the rail and the rail, insert the connector into the groove on the inner side of the rail, insert 75mm on each side, and then lock the bolts.



Effect after installation

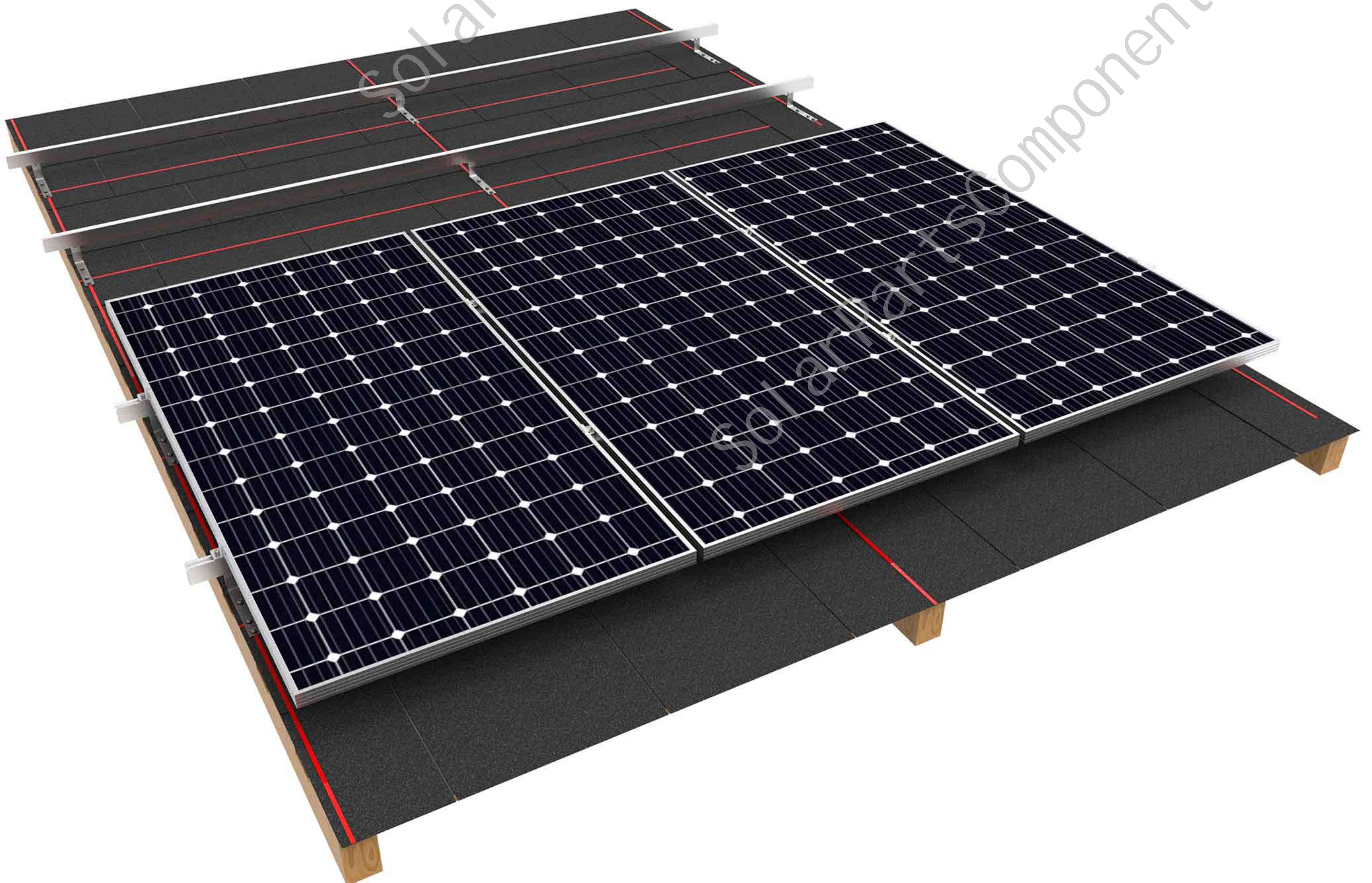


According to the above steps, connect the rails with rail splice first, and then install the rails on the hooks according to the construction drawings. After all the rails are installed, as picture 9 shows.

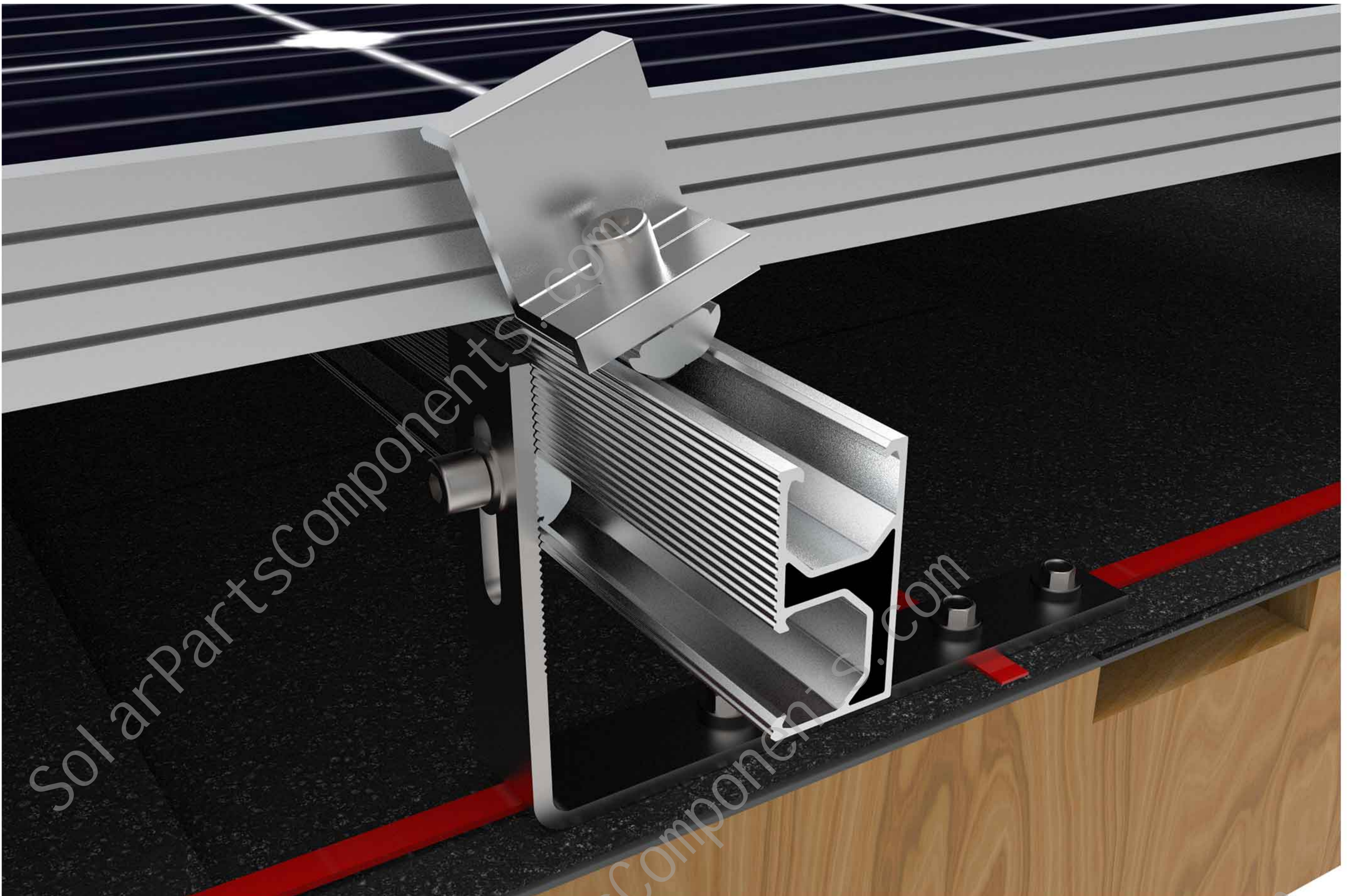


picture 9

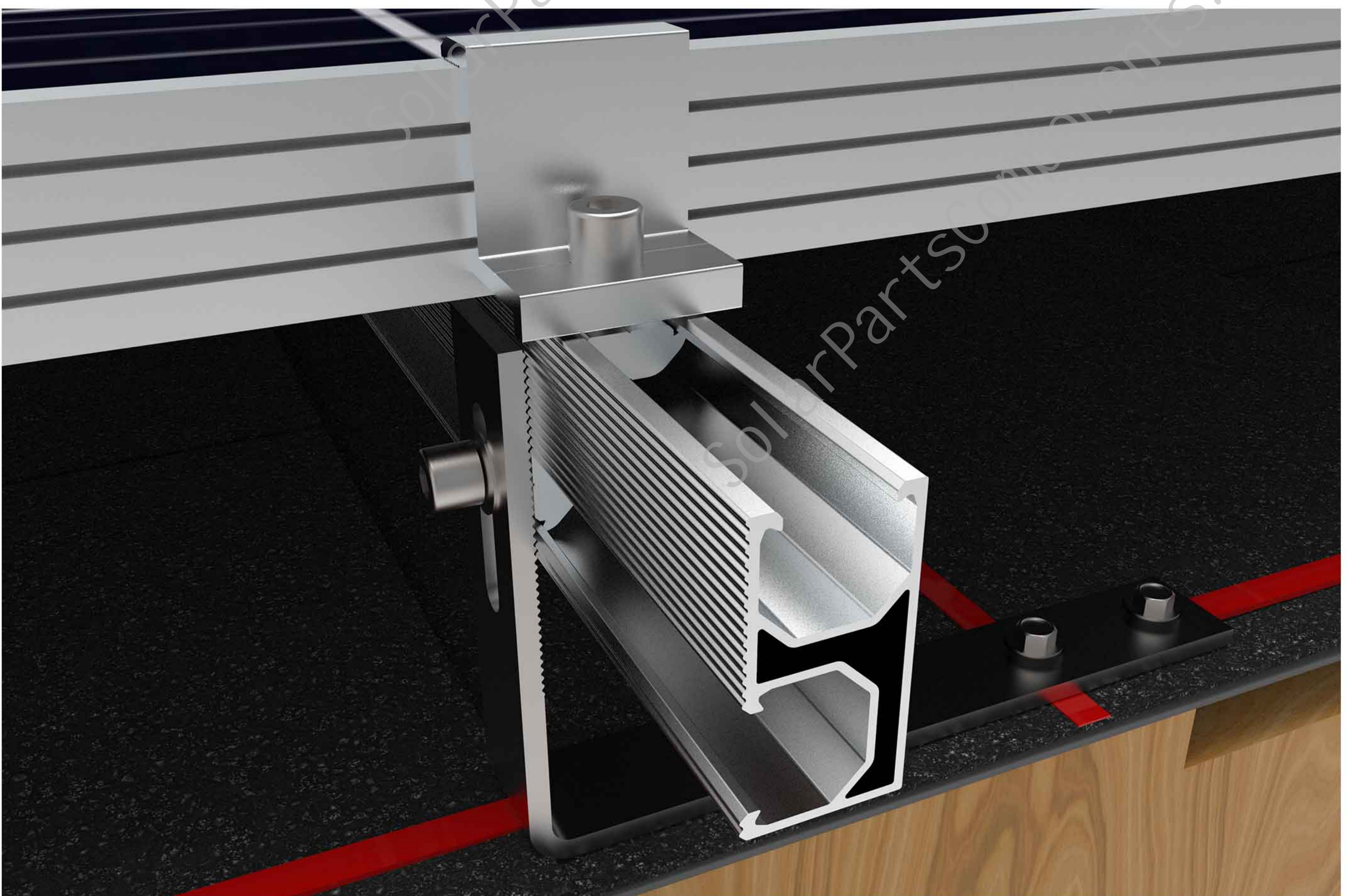
Step five, put the panel vertically on the two rails, the installation sequence can be from left to right, from bottom to top, first press the solar panel by hand to prevent the panel from sliding down.



Step six, use the end clamp to lock the side of panels, screw the sliding nut on the end clamp to the bottom of the bolt, and then put it sideways into the groove of the rail.



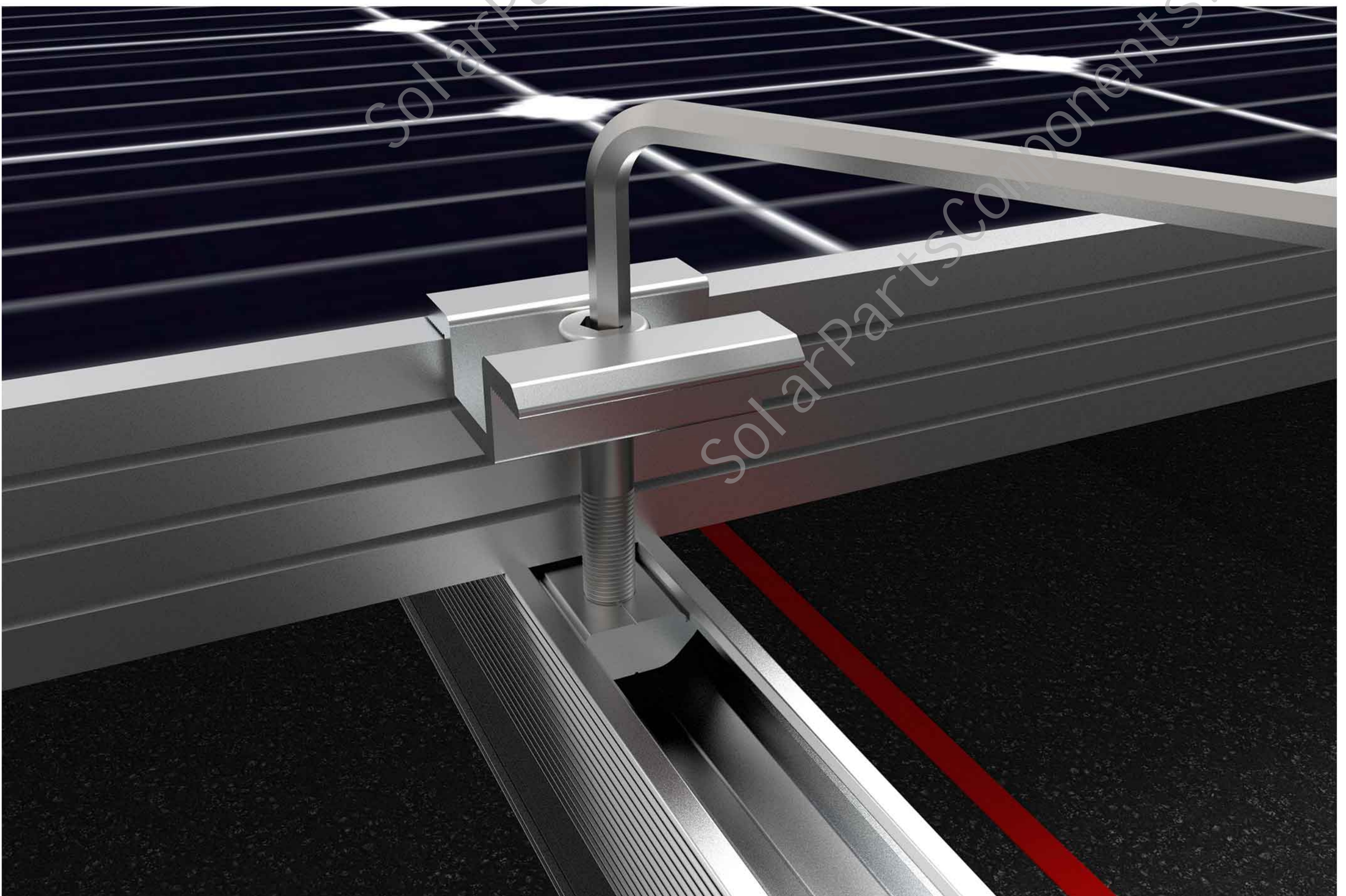
After install the end clamp, as following picture shows.



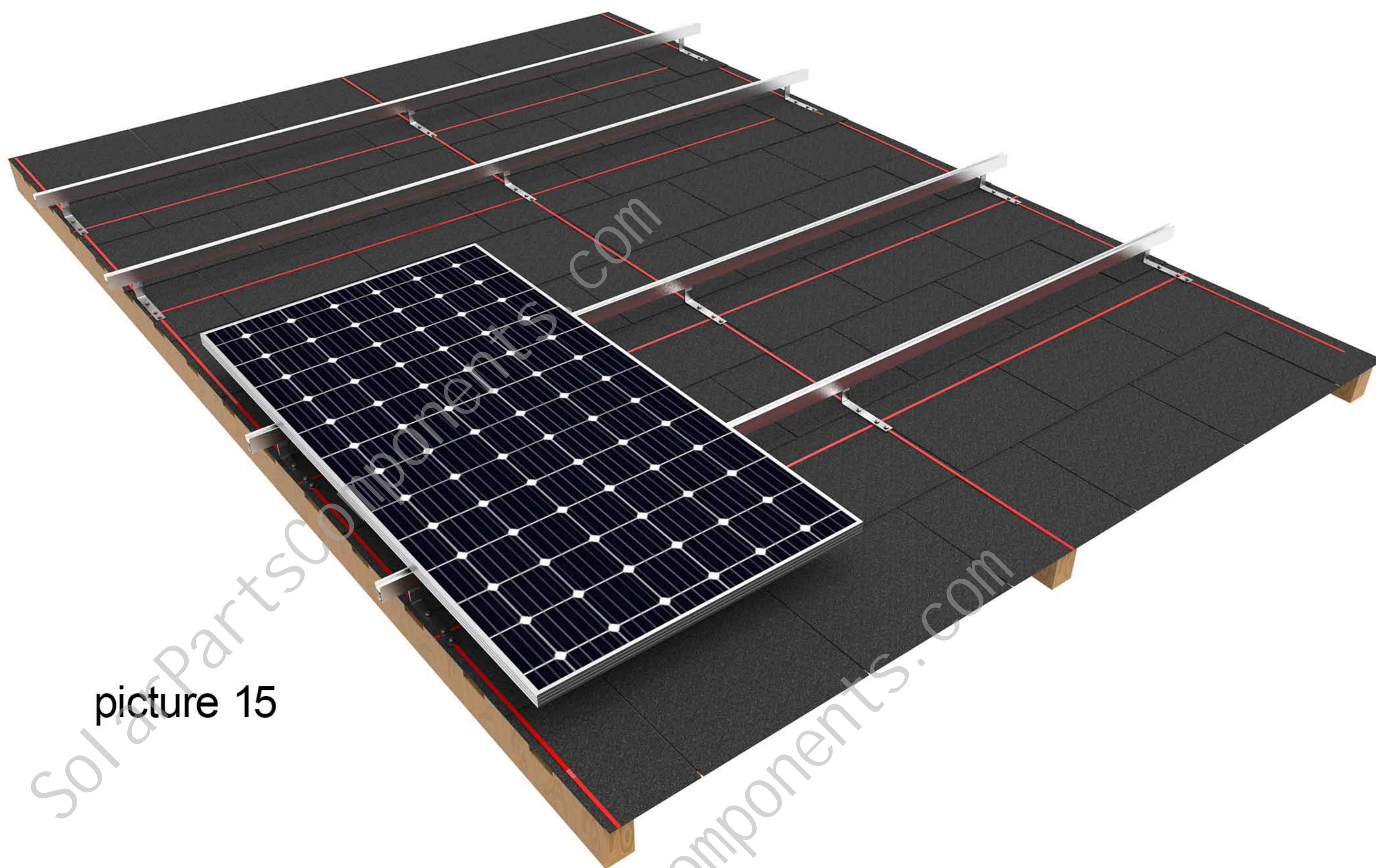
Step seven, The installation of the mid clamp is the same as that of the end clamp. First, screw the sliding nut on the mid clamp to the bottom of the bolt, and then put it sideways into the groove of the rail.



After install the mid clamp, as following picture shows



According to the above steps, use the mid clamp to install the panels from left to right, as the picture 15 shows.

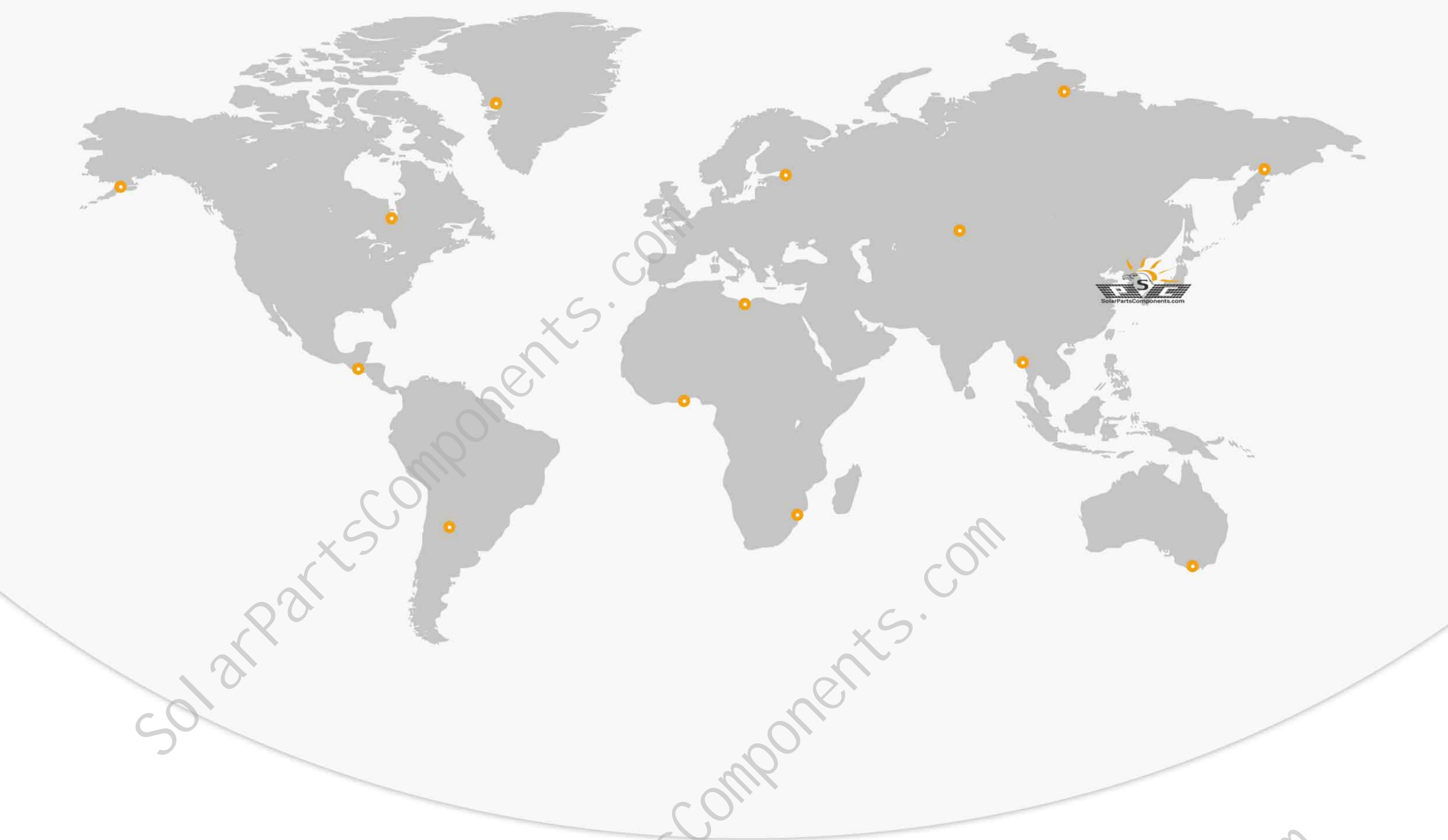


picture 15

After the overall installation as the picture 16



picture 16



Solar Mounting Parts & Components Factory



SolarPartsComponents.com
XIAMEN TOP BEST TECH CO.,LTD
Info@SolarPartsComponents.com

